



5931 West Campus Circle Drive  
 Irving, Texas 75063  
 Phone: (972) 751-9400  
 Fax: (972) 751-9500  
 www.packexpo.com

October 14-17, 2018  
 McCormick Place  
 Chicago, Illinois USA

CO-LOCATED



Healthcare  
 PACKAGING  
 EXPO

October 14-17, 2018 • McCormick Place  
 Chicago, Illinois USA

## Furniture and Accessories

Discount Deadline:  
**August 27, 2018**  
 (excludes labor)

Description		Qty	Advanced Price	Standard Price	Total
<b>1 Seating</b>	810119	Naples Chair - Black Leather	X \$ 280.66	\$ 400.95	=
	830120	Naples Loveseat - Black Leather	X \$ 377.05	\$ 538.65	=
	830119	Naples Sofa - Black Leather	X \$ 426.05	\$ 608.65	=
	810150	Munich Corner Chair - Gray Fabric	X \$ 407.75	\$ 582.50	=
	810151	Munich Armless Chair - Gray Fabric	X \$ 356.61	\$ 509.45	=
	830200	Munich Armless Loveseat - Gray Fabric	X \$ 598.15	\$ 854.50	=
	830201	Munich 3 Piece Sectional - Gray Fabric	X \$1,362.72	\$1,946.75	=
	81050	Baja Chair - White Vinyl	X \$ 406.32	\$ 580.45	=
	83020	Baja Loveseat - White Vinyl	X \$ 432.25	\$ 617.50	=
	8301	South Beach Sofa - Platinum Suede	X \$ 479.60	\$ 685.15	=
	8151	South Beach Ottoman - Platinum Suede	X \$ 210.63	\$ 300.90	=
	830950	Key Largo Loveseat - Black Fabric	X \$ 246.82	\$ 352.60	=
	830951	Key Largo Sofa - Black Fabric	X \$ 274.44	\$ 392.05	=
	810950	Key Largo Chair - Black Fabric	X \$ 188.61	\$ 269.45	=
	81019	Allegro Chair - Blue Fabric	X \$ 379.58	\$ 542.25	=
	83015	Allegro Sofa - Blue Fabric	X \$ 605.85	\$ 865.50	=
	810949	Fairfax Chair - White Vinyl	X \$ 159.07	\$ 227.25	=
	830949	Fairfax Sofa - White Vinyl	X \$ 253.85	\$ 362.65	=
	810140	Hopi Chair - Gray Linen	X \$ 162.54	\$ 232.20	=
	830150	Hopi Sofa - Gray Linen	X \$ 207.62	\$ 296.60	=
810118	Tangiers Chair - Beige Fabric	X \$ 326.38	\$ 466.25	=	
830220	Tangiers Loveseat - Beige Fabric	X \$ 503.05	\$ 718.65	=	
830118	Tangiers Sofa - Beige Fabric	X \$ 323.05	\$ 461.50	=	

Description		Qty	Advanced Price	Standard Price	Total
<b>2 Casual Seating</b>	<b>Ottomans</b>				
	815122	Endless Square - White Leather	X \$ 160.68	\$ 229.55	=
	815123	Endless Square - Black Leather	X \$ 160.68	\$ 229.55	=
	815953	Endless Curve - White Leather	X \$ 206.96	\$ 295.65	=
	815952	Endless Curve - Black Leather	X \$ 206.96	\$ 295.65	=
	815119	Half Bench Ottoman - White Vinyl	X \$ 258.33	\$ 369.05	=
	81518	Vibe Cube - Blue Vinyl	X \$ 106.57	\$ 152.25	=
	81519	Vibe Cube - Red Vinyl	X \$ 106.57	\$ 152.25	=
	81525	Vibe Cube - Orange Vinyl	X \$ 106.57	\$ 152.25	=
	81520	Vibe Cube - Pink Vinyl	X \$ 106.57	\$ 152.25	=
	81517	Vibe Cube - Yellow Vinyl	X \$ 106.57	\$ 152.25	=
	81530	Vibe Cube - Black Vinyl	X \$ 94.40	\$ 134.85	=
	81531	Vibe Cube - White Vinyl	X \$ 94.40	\$ 134.85	=

**Cancellation Policy:** Cancellations received less than 2-weeks prior to the first day of exhibitor scheduled move-in will be billed at 50%. Cancellations received on site will be billed 100%.

### ADDITIONAL INFORMATION

### CALCULATING YOUR TOTAL

Can't find it? Please call your Customer Account Manager (CAM) with any questions, needs or special requests.

Subtotal \_\_\_\_\_

(Transfer Subtotal to Form 9k)

Exhibiting Company: \_\_\_\_\_

Booth Number: \_\_\_\_\_

Print Name: \_\_\_\_\_

Date: \_\_\_\_\_

Authorizer's Signature: \_\_\_\_\_



5931 West Campus Circle Drive  
 Irving, Texas 75063  
 Phone: (972) 751-9400  
 Fax: (972) 751-9500  
 www.packexpo.com

October 14-17, 2018  
 McCormick Place  
 Chicago, Illinois USA

CO-LOCATED



Healthcare  
 PACKAGING  
 EXPO

October 14-17, 2018 • McCormick Place  
 Chicago, Illinois USA

## Furniture and Accessories

Discount Deadline:  
**August 27, 2018**  
 (excludes labor)

Description		Qty	Advanced Price	Standard Price	Total
<b>2</b> Casual Seating (cont.)	<b>Ottomans (continued)</b>				
	81532	Vibe Cube - Steel Blue Vinyl	X	\$ 96.64	\$ 138.05 =
	81533	Vibe Cube - Silver Vinyl	X	\$ 96.64	\$ 138.05 =
	81534	Vibe Cube - Purple Vinyl	X	\$ 96.64	\$ 138.05 =
	815151	Marche Swivel Ottoman - Gray Fabric	X	\$ 160.26	\$ 228.95 =
	815154	Marche Swivel Ottoman - Red Fabric	X	\$ 160.26	\$ 228.95 =
	815159	Marche Swivel Ottoman - Blue Fabric	X	\$ 160.26	\$ 228.95 =
	815152	Marche Swivel Ottoman - Linen Fabric	X	\$ 160.26	\$ 228.95 =
	815157	Marche Swivel Ottoman - Meadow Green	X	\$ 160.26	\$ 228.95 =
	815158	Marche Swivel Ottoman - Pear Yellow	X	\$ 160.26	\$ 228.95 =
	815156	Marche Swivel Ottoman - Plum Fabric	X	\$ 160.26	\$ 228.95 =
	815153	Marche Swivel Ottoman - Raspberry Fabric	X	\$ 160.26	\$ 228.95 =
	815155	Marche Swivel Ottoman - Rose Quartz	X	\$ 160.26	\$ 228.95 =
	815150	Marche Swivel Ottoman - White Vinyl	X	\$ 160.26	\$ 228.95 =
	81526	Edge LED Cube Ottoman	X	\$ 153.34	\$ 219.05 =
	<b>Banquettes</b>				
	8506	Banquette Center Cone - Powered - White	X	\$ 458.99	\$ 655.70 =
	8507	Banquette Quarter Curve Ottoman - White	X	\$ 303.41	\$ 433.45 =
	<b>Ottomans</b>				
	81550	Beverly Bench Ottoman - Black Vinyl	X	\$ 303.34	\$ 433.35 =
81551	Beverly Bench Ottoman - Brown Fabric	X	\$ 303.34	\$ 433.35 =	
81552	Beverly Bench Ottoman - Gray Fabric	X	\$ 303.34	\$ 433.35 =	
81553	Beverly Bench Ottoman - Linen Fabric	X	\$ 303.34	\$ 433.35 =	
81554	Beverly Bench Ottoman - Ocean Blue	X	\$ 303.34	\$ 433.35 =	
81555	Beverly Bench Ottoman - Red Fabric	X	\$ 303.34	\$ 433.35 =	
81556	Beverly Bench Ottoman - White Vinyl	X	\$ 303.34	\$ 433.35 =	
<b>Occasional Chairs</b>					
71089	Black Diamond Side Chair	X	\$ 141.36	\$ 201.95 =	
71090	Black Diamond Arm Chair	X	\$ 154.31	\$ 220.45 =	
810861	Laguna Chair - Maple, Chrome	X	\$ 98.98	\$ 141.40 =	
210108	Limerick® Chair by Herman Miller - Gray	X	\$ 102.86	\$ 146.95 =	
8102	Madrid Chair - Black Vinyl	X	\$ 594.62	\$ 849.45 =	
810816	Madrid Chair - White Vinyl	X	\$ 594.62	\$ 849.45 =	
810948	Meeting Chair - White Vinyl	X	\$ 244.86	\$ 349.80 =	
810835	Meeting Chair - Espresso Vinyl	X	\$ 162.68	\$ 232.40 =	
810836	Meeting Chair - Taupe Microfiber	X	\$ 213.18	\$ 304.55 =	
8103	Key West Chair - Black Fabric	X	\$ 230.37	\$ 329.10 =	

**Cancellation Policy:** Cancellations received less than 2-weeks prior to the first day of exhibitor scheduled move-in will be billed at 50%. Cancellations received on site will be billed 100%.

### ADDITIONAL INFORMATION

### CALCULATING YOUR TOTAL

Can't find it? Please call your Customer Account Manager (CAM) with any questions, needs or special requests.

Subtotal \_\_\_\_\_

(Transfer Subtotal to Form 9k)

Exhibiting Company: \_\_\_\_\_

Booth Number: \_\_\_\_\_

Print Name: \_\_\_\_\_

Date: \_\_\_\_\_

Authorizer's Signature: \_\_\_\_\_



5931 West Campus Circle Drive  
 Irving, Texas 75063  
 Phone: (972) 751-9400  
 Fax: (972) 751-9500  
 www.packexpo.com

October 14-17, 2018  
 McCormick Place  
 Chicago, Illinois USA

CO-LOCATED



Healthcare  
 PACKAGING  
 EXPO

October 14-17, 2018 • McCormick Place  
 Chicago, Illinois USA

## Furniture and Accessories

Discount Deadline:  
**August 27, 2018**  
 (excludes labor)

Description		Qty	Advanced Price	Standard Price	Total
2	<b>Casual Seating (cont.)</b>				
	<b>Occasional Chairs (cont.)</b>				
	810843	Madden Chair - Gray Vinyl	X	\$ 228.90	\$ 327.00 =
	810131	Malba Chair - Gray	X	\$ 72.06	\$ 102.95 =
	810130	Malba Chair - Green	X	\$ 69.30	\$ 99.00 =
	810846	Christopher Chair - White Vinyl	X	\$ 112.77	\$ 161.10 =
	810851	Zenith Chair - White Vinyl	X	\$ 112.14	\$ 160.20 =
	810841	Rustique Chair - Gunmetal	X	\$ 112.77	\$ 161.10 =
	810837	Razor Armless Chair - White Plastic	X	\$ 43.02	\$ 61.45 =
	810875	Swanson Swivel Chair - White Vinyl	X	\$ 125.40	\$ 179.15 =
	810811	Berlin Chair - White/Red	X	\$ 110.88	\$ 158.40 =
	810810	Berlin Chair - White/Black	X	\$ 110.88	\$ 158.40 =
	810847	Wendy Chair - Clear Acrylic	X	\$ 64.16	\$ 91.65 =
	<b>Conference Chairs</b>				
	71046	Gray Gaslift Chair with Arms	X	\$ 254.14	\$ 363.05 =
	71045	Gray Gaslift Chair without Arms	X	\$ 212.20	\$ 303.15 =
	810874	La Brea Swivel Chair - Charcoal	X	\$ 167.20	\$ 238.85 =
	81063	Altura Guest Chair	X	\$ 486.29	\$ 694.70 =
	810844	Pro Executive High Back Chair - White	X	\$ 257.00	\$ 367.15 =
	810946	Pro Executive High Back Chair - Black	X	\$ 144.86	\$ 206.95 =
	810945	Pro Executive Mid Back Chair - White Vinyl	X	\$ 170.62	\$ 243.75 =
	810944	Pro Executive Mid Back Chair - Black Vinyl	X	\$ 251.09	\$ 358.70 =
	810947	Pro Executive Guest Chair - Black Vinyl	X	\$ 168.46	\$ 240.65 =
	<b>Bars and Barstools</b>				
	8501	Martini Bar	X	\$1,492.12	\$2,131.60 =
	71088	Black Diamond Bar Stool	X	\$ 253.08	\$ 361.55 =
	71048	Gray Gaslift Stool with Arms	X	\$ 362.22	\$ 517.45 =
	71047	Gray Gaslift Stool without Arms	X	\$ 318.22	\$ 454.60 =
	810860	Laguna Barstool - Maple/Chrome	X	\$ 124.64	\$ 178.05 =
	210109	Limerick® Stool by Herman Miller - Gray	X	\$ 114.41	\$ 163.45 =
	810872	Lift Barstool - Gray	X	\$ 87.68	\$ 125.25 =
	810873	Lift Barstool - Red	X	\$ 87.68	\$ 125.25 =
	810871	Lift Barstool - Black	X	\$ 87.68	\$ 125.25 =
810870	Lift Barstool - White	X	\$ 87.68	\$ 125.25 =	
810951	Apex Barstool - Black Vinyl	X	\$ 112.14	\$ 160.20 =	
810952	Apex Barstool - Blue Ultra Suede	X	\$ 112.14	\$ 160.20 =	
810953	Apex Barstool - Black Vinyl	X	\$ 112.14	\$ 160.20 =	
810954	Apex Barstool - White Vinyl	X	\$ 112.14	\$ 160.20 =	

**Cancellation Policy:** Cancellations received less than 2-weeks prior to the first day of exhibitor scheduled move-in will be billed at 50%. Cancellations received on site will be billed 100%.

### ADDITIONAL INFORMATION

### CALCULATING YOUR TOTAL

Can't find it? Please call your Customer Account Manager (CAM) with any questions, needs or special requests.

Subtotal \_\_\_\_\_

(Transfer Subtotal to Form 9k)

Exhibiting Company: \_\_\_\_\_

Booth Number: \_\_\_\_\_

Print Name: \_\_\_\_\_

Date: \_\_\_\_\_

Authorizer's Signature: \_\_\_\_\_



5931 West Campus Circle Drive  
 Irving, Texas 75063  
 Phone: (972) 751-9400  
 Fax: (972) 751-9500  
 www.packexpo.com

October 14-17, 2018  
 McCormick Place  
 Chicago, Illinois USA

CO-LOCATED



Healthcare  
 PACKAGING  
 EXPO

October 14-17, 2018 • McCormick Place  
 Chicago, Illinois USA

## Furniture and Accessories

Discount Deadline:  
**August 27, 2018**  
 (excludes labor)

Description		Qty	Advanced Price	Standard Price	Total
<b>2</b> Casual Seating (cont.)	<b>Bars and Barstools (cont.)</b>				
	1810103	Banana Barstool - White Vinyl	X	\$ 205.52	\$ 293.60 =
	1810104	Banana Barstool - Black Vinyl	X	\$ 205.52	\$ 293.60 =
	1810850	Zenith Barstool - White Vinyl	X	\$ 112.14	\$ 160.20 =
	1810840	Zoey Barstool - White Vinyl	X	\$ 279.61	\$ 399.45 =
	1810834	Zoey Barstool - Black Vinyl	X	\$ 231.87	\$ 331.25 =
	1810848	Christopher Barstool - White	X	\$ 134.44	\$ 192.05 =
	1810202	Shark Barstool - White Plastic/Chrome	X	\$ 254.27	\$ 363.25 =
	1810839	Rustique Barstool - Gunmetal	X	\$ 112.77	\$ 161.10 =
	1810200	Oslo Barstool - Blue Plastic/Chrome	X	\$ 277.16	\$ 395.95 =
1810201	Oslo Barstool - White Plastic/Chrome	X	\$ 277.16	\$ 395.95 =	

Description		Qty	Advanced Price	Standard Price	Total
<b>3</b> Tables	<b>Draped and Undraped Tables and Counters</b>				
	Check color. <input type="checkbox"/> Black <input type="checkbox"/> Blue <input type="checkbox"/> Brown <input type="checkbox"/> Green <input type="checkbox"/> Flax				
	<input type="checkbox"/> Gold <input type="checkbox"/> Gray <input type="checkbox"/> Plum <input type="checkbox"/> Red <input type="checkbox"/> White				
	<b>Draped Tables and Counters - 24" wide</b>				
	124330	3'L x 30"H Draped Table	X	\$ 97.23	\$ 138.90 =
	124430	4'L x 30"H Draped Table	X	\$ 125.02	\$ 178.60 =
	124630	6'L x 30"H Draped Table	X	\$ 160.58	\$ 229.40 =
	124830	8'L x 30"H Draped Table	X	\$ 194.04	\$ 277.20 =
	12404630	4th Side Drape for 6'L x 30"H Table	X	\$ 39.90	\$ 57.00 =
	12404830	4th Side Drape for 8'L x 30"H Table	X	\$ 39.90	\$ 57.00 =
	124342	3'L x 42"H Draped Counter	X	\$ 131.99	\$ 188.55 =
	124442	4'L x 42"H Draped Counter	X	\$ 160.68	\$ 229.55 =
	124642	6'L x 42"H Draped Counter	X	\$ 192.88	\$ 275.55 =
	124842	8'L x 42"H Draped Counter	X	\$ 223.48	\$ 319.25 =
	12404642	4th Side Drape for 6'L x 42"H Counter	X	\$ 52.71	\$ 75.30 =
	12404842	4th Side Drape for 8'L x 42"H Counter	X	\$ 52.71	\$ 75.30 =
	<b>Undraped Tables and Counters</b>				
	125330	3'L x 30"H UNDRAPED Table	X	\$ 36.40	\$ 52.00 =
	125430	4'L x 30"H UNDRAPED Table	X	\$ 41.96	\$ 59.95 =
	125630	6'L x 30"H UNDRAPED Table	X	\$ 55.72	\$ 79.60 =
	125830	8'L x 30"H UNDRAPED Table	X	\$ 66.22	\$ 94.60 =
	125342	3'L x 42"H UNDRAPED Counter	X	\$ 66.22	\$ 94.60 =
	125442	4'L x 42"H UNDRAPED Counter	X	\$ 71.47	\$ 102.10 =
	125642	6'L x 42"H UNDRAPED Counter	X	\$ 84.28	\$ 120.40 =
	125842	8'L x 42"H UNDRAPED Counter	X	\$ 95.58	\$ 136.55 =

**Cancellation Policy:** Cancellations received less than 2-weeks prior to the first day of exhibitor scheduled move-in will be billed at 50%. Cancellations received on site will be billed 100%.

### ADDITIONAL INFORMATION

### CALCULATING YOUR TOTAL

Can't find it? Please call your Customer Account Manager (CAM) with any questions, needs or special requests.

Subtotal \_\_\_\_\_

(Transfer Subtotal to Form 9k)

Exhibiting Company: \_\_\_\_\_

Booth Number: \_\_\_\_\_

Print Name: \_\_\_\_\_

Date: \_\_\_\_\_

Authorizer's Signature: \_\_\_\_\_



5931 West Campus Circle Drive  
 Irving, Texas 75063  
 Phone: (972) 751-9400  
 Fax: (972) 751-9500  
 www.packexpo.com

October 14-17, 2018  
 McCormick Place  
 Chicago, Illinois USA

CO-LOCATED



Healthcare  
 PACKAGING  
 EXPO

October 14-17, 2018 • McCormick Place  
 Chicago, Illinois USA

## Furniture and Accessories

Discount Deadline:  
**August 27, 2018**  
 (excludes labor)

Description		Qty	Advanced Price	Standard Price	Total
<b>3</b> Tables (cont.)	<b>Drape for EXHIBITOR OWNED Tables and Counters</b>				
	Check color. <input type="checkbox"/> Black <input type="checkbox"/> Blue <input type="checkbox"/> Brown <input type="checkbox"/> Green <input type="checkbox"/> Flax <input type="checkbox"/> Gold <input type="checkbox"/> Gray <input type="checkbox"/> Plum <input type="checkbox"/> Red <input type="checkbox"/> White				
	Drape for EXHIBITOR OWNED 3'L x 30"H Table	X	\$ 60.83	\$ 86.90	=
	Drape for EXHIBITOR OWNED 4'L x 30"H Table	X	\$ 83.06	\$ 118.65	=
	Drape for EXHIBITOR OWNED 6'L x 30"H Table	X	\$ 104.86	\$ 149.80	=
	Drape for EXHIBITOR OWNED 8'L x 30"H Table	X	\$ 127.82	\$ 182.60	=
	Drape for EXHIBITOR OWNED 3'L x 42"H Counter	X	\$ 65.76	\$ 93.95	=
	Drape for EXHIBITOR OWNED 4'L x 42"H Counter	X	\$ 89.22	\$ 127.45	=
	Drape for EXHIBITOR OWNED 6'L x 42"H Counter	X	\$ 108.60	\$ 155.15	=
	Drape for EXHIBITOR OWNED 8'L x 42"H Counter	X	\$ 127.89	\$ 182.70	=
	<b>Pedestal Tables</b>				
	72069 Soho Black-Top Café Table 24"R x 30"H	X	\$ 198.45	\$ 283.50	=
	72067 Soho Black-Top Café Table 36"R x 30"H	X	\$ 204.15	\$ 291.65	=
	72066 Soho Black-Top Mini Table 18"R x 18"H	X	\$ 108.54	\$ 155.05	=
	72070 Soho Black-Top Bistro Table 24"R x 42"H	X	\$ 216.54	\$ 309.35	=
	72068 Soho Black-Top Bistro Table 36"R x 42"H	X	\$ 222.74	\$ 318.20	=
	72063 Chelsea Butcher Block Café Tbl 30"R x 30"H	X	\$ 204.15	\$ 291.65	=
	72064 Chelsea Butcher Block Café Tbl 36"R x 30"H	X	\$ 204.15	\$ 291.65	=
	720163 Chelsea Butcher Block Bistro 30"R x 42"H	X	\$ 222.74	\$ 318.20	=
	720164 Chelsea Butcher Block Bistro 36"R x 42"H	X	\$ 222.74	\$ 318.20	=
8201208 Hydraulic Base Café Tbl, Maple 30"R x 29"H	X	\$ 254.76	\$ 363.95	=	
8201207 Hydraulic Base Bar Tbl, Maple 30"R x 45"H	X	\$ 267.58	\$ 382.25	=	
8201203 Std Base Café Tbl, Blue Steel 30"R x 29"H	X	\$ 173.00	\$ 247.15	=	
8201204 Std Base Bar Table, Blue Steel 30"R x 42"H	X	\$ 219.48	\$ 313.55	=	
8201209 Hydraulic Base Café, Graphite 36"R x 29"H	X	\$ 285.88	\$ 408.40	=	
8201211 Hydraulic Base Bar, Graphite 36"R x 45"H	X	\$ 293.23	\$ 418.90	=	
8201206 Hydraulic Base Café Tbl, Maple 36"R x 29"H	X	\$ 284.06	\$ 405.80	=	
8201205 Hydraulic Base Bar Tbl, Maple 36"R x 45"H	X	\$ 289.55	\$ 413.65	=	
820126 Hydraulic Base Café, Wht Lam 36"R x 29"H	X	\$ 284.27	\$ 406.10	=	
820125 Hydraulic Base Bar, White Lam 36"R x 45"H	X	\$ 297.36	\$ 424.80	=	

**Cancellation Policy:** Cancellations received less than 2-weeks prior to the first day of exhibitor scheduled move-in will be billed at 50%. Cancellations received on site will be billed 100%.

### ADDITIONAL INFORMATION

### CALCULATING YOUR TOTAL

Can't find it? Please call your Customer Account Manager (CAM) with any questions, needs or special requests.

Subtotal \_\_\_\_\_

(Transfer Subtotal to Form 9k)

Exhibiting Company: \_\_\_\_\_

Booth Number: \_\_\_\_\_

Print Name: \_\_\_\_\_

Date: \_\_\_\_\_

Authorizer's Signature: \_\_\_\_\_



5931 West Campus Circle Drive  
 Irving, Texas 75063  
 Phone: (972) 751-9400  
 Fax: (972) 751-9500  
 www.packexpo.com

October 14-17, 2018  
 McCormick Place  
 Chicago, Illinois USA

CO-LOCATED



Healthcare  
 PACKAGING  
 EXPO

October 14-17, 2018 • McCormick Place  
 Chicago, Illinois USA

## Furniture and Accessories

Discount Deadline:  
**August 27, 2018**  
 (excludes labor)

Description		Qty	Advanced Price	Standard Price	Total	
<b>3</b>	<b>Tables (cont.)</b>					
	<b>Pedestal Tables (cont.)</b>					
	820241	Madison Hyd Base Café, Gray 30”R x 29”H	X	\$ 233.70	\$ 333.85	=
	820240	Madison Hyd Base Bar, Gray 30”R x 45”H	X	\$ 233.70	\$ 333.85	=
	820265	Madison Std Base Café, Gray 30”R x 29”H	X	\$ 175.42	\$ 250.60	=
	820264	Madison Std Base Bar, Gray 30”R x 42”H	X	\$ 192.08	\$ 274.40	=
	8201220	Standard Base Café, Wht Lam 30”R x 29”H	X	\$ 175.91	\$ 251.30	=
	8201221	Standard Base Bar, White Lam 30”R x 42”H	X	\$ 189.24	\$ 270.35	=
	8201222	Hydraulic Base Bar, White Lam 30”R x 45”H	X	\$ 271.00	\$ 387.15	=
	8201223	Hydraulic Base Café, Wht Lam 30”R x 29”H	X	\$ 271.00	\$ 387.15	=
	820920	Hydraulic Base Bar Table, Red 30”R x 45”H	X	\$ 209.86	\$ 299.80	=
	820921	Hydraulic Base Café Table, Red 30”R x 29”H	X	\$ 209.86	\$ 299.80	=
	820922	Hydraulic Base Bar, Graphite 30”R x 45”H	X	\$ 209.86	\$ 299.80	=
	820923	Hydraulic Base Café, Graphite 30”R x 29”H	X	\$ 209.86	\$ 299.80	=
	820924	Hydraulic Base Bar Tbl, Silver 30”R x 45”H	X	\$ 255.81	\$ 365.45	=
	820925	Hydraulic Base Café Tbl, Silver 30”R x 29”H	X	\$ 255.81	\$ 365.45	=
	<b>Occasional, End and Cocktail Tables</b>					
	82015	Silverado End Table, Glass/Steel	X	\$ 313.50	\$ 447.85	=
	82014	Silverado Cocktail Table, Glass/Steel	X	\$ 332.78	\$ 475.40	=
	820252	Alondra End Table, Glass/Chrome	X	\$ 162.54	\$ 232.20	=
	820250	Alondra Cocktail Table, Glass/Chrome	X	\$ 225.54	\$ 322.20	=
	820253	Alondra End Table, Wood/Chrome	X	\$ 162.54	\$ 232.20	=
	820251	Alondra Cocktail Table, Wood/Chrome	X	\$ 225.54	\$ 322.20	=
	8201224	Atomic 36” Round Table, Glass/Chrome	X	\$ 236.77	\$ 338.25	=
	8201225	Atomic 42” Round Table, Glass/Chrome	X	\$ 236.77	\$ 338.25	=
82028	Geo End Table, Wood/Black	X	\$ 192.54	\$ 275.05	=	
82027	Geo Cocktail Table, Wood/Black	X	\$ 151.20	\$ 216.00	=	
82035	Geo End Table, Glass/Chrome	X	\$ 316.64	\$ 452.35	=	
82034	Geo Cocktail Table, Glass/Chrome	X	\$ 313.50	\$ 447.85	=	
82054	Sydney End Table, Black/Steel	X	\$ 241.85	\$ 345.50	=	
82055	Sydney End Table, White/Steel	X	\$ 180.21	\$ 257.45	=	
82052	Sydney Cocktail Table, Black/Steel	X	\$ 291.69	\$ 416.70	=	
82053	Sydney Cocktail Table, White/Steel	X	\$ 291.69	\$ 416.70	=	
82075	Regis End Table, Brushed Metal	X	\$ 110.28	\$ 157.55	=	
82074	Regis Bench/Table, Brushed Metal	X	\$ 155.99	\$ 222.85	=	
820844	Aura Round Table, White Metal	X	\$ 120.16	\$ 171.65	=	
82057	Edge LED Cube Table, White / Clear Top	X	\$ 153.34	\$ 219.05	=	
82043	Geo Square-Round Table, Glass/Black	X	\$ 160.76	\$ 229.65	=	
82044	Geo Square-Round Table, Glass/Chrome	X	\$ 160.76	\$ 229.65	=	

**Cancellation Policy:** Cancellations received less than 2-weeks prior to the first day of exhibitor scheduled move-in will be billed at 50%. Cancellations received on site will be billed 100%.

### ADDITIONAL INFORMATION

### CALCULATING YOUR TOTAL

Can't find it? Please call your Customer Account Manager (CAM) with any questions, needs or special requests.

Subtotal \_\_\_\_\_

(Transfer Subtotal to Form 9k)

Exhibiting Company: \_\_\_\_\_

Booth Number: \_\_\_\_\_

Print Name: \_\_\_\_\_

Date: \_\_\_\_\_

Authorizer's Signature: \_\_\_\_\_



5931 West Campus Circle Drive  
 Irving, Texas 75063  
 Phone: (972) 751-9400  
 Fax: (972) 751-9500  
 www.packexpo.com

October 14-17, 2018  
 McCormick Place  
 Chicago, Illinois USA

CO-LOCATED



Healthcare  
 PACKAGING  
 EXPO

October 14-17, 2018 • McCormick Place  
 Chicago, Illinois USA

## Furniture and Accessories

Discount Deadline:  
**August 27, 2018**  
 (excludes labor)

	Description	Qty	Advanced Price	Standard Price	Total
<b>3</b> Tables (cont.)	<b>Occasional, End and Cocktail Tables (cont.)</b>				
	82088	Oliver End Table, Walnut	X	\$ 178.32	\$ 254.75 =
	82087	Oliver Cocktail Table, Walnut	X	\$ 201.11	\$ 287.30 =
	8201226	Rustique Square Metal Bar Table, Gray	X	\$ 208.25	\$ 297.50 =
	<b>Conference Tables</b>				
	82041	Geo Conference Table, Glass/Black	X	\$ 535.26	\$ 764.65 =
	82051	Geo Conference Table, Glass/Chrome	X	\$ 535.26	\$ 764.65 =
	820260	Madison Conference Table, Gray Acajou	X	\$ 300.37	\$ 429.10 =
	820708	42" Round White Conference Table	X	\$ 207.80	\$ 296.85 =
	820203	6' Oval Conference Table, Granite Nebula	X	\$ 425.00	\$ 607.15 =
	820261	Madison 5' Table, Gray Acajou	X	\$ 363.93	\$ 519.90 =
	820262	Madison 8' Table, Gray Acajou	X	\$ 726.78	\$1,038.25 =
	820263	Madison 10' Table, Gray Acajou	X	\$ 726.78	\$1,038.25 =
	82058	G30 Café Table w/ Grommets, Maple/Metal	X	\$ 383.32	\$ 547.60 =
	82067	G30 Café Table Solid, Maple/Metal	X	\$ 383.32	\$ 547.60 =
	82063	G30 Café Table Solid, White/Metal	X	\$ 383.32	\$ 547.60 =
	820951	Ventura Bar Table w/ Grommets, Maple	X	\$ 513.73	\$ 733.90 =
	820952	Ventura Communal Bar Table, Black	X	\$ 503.12	\$ 718.75 =
	820953	Ventura Bar Table w/ Grommets, White	X	\$ 513.73	\$ 733.90 =
	820954	Ventura Communal Bar Table, Maple	X	\$ 513.73	\$ 733.90 =
820956	Ventura Communal Bar Table, White	X	\$ 513.73	\$ 733.90 =	
<b>4</b> Office	84075	Madison Desk, Gray Acajou	X	\$ 540.52	\$ 643.60 =
	84077	Madison Credenza, Gray Acajou	X	\$ 375.76	\$ 536.80 =
	84078	Madison Bookcase, Gray Acajou	X	\$ 321.54	\$ 459.35 =
	820706	Computer Work Desk/Table, White	X	\$ 178.96	\$ 255.65 =
	820707	Merlin Computer Desk/Table, Gray Lam	X	\$ 185.88	\$ 265.55 =

**Cancellation Policy:** Cancellations received less than 2-weeks prior to the first day of exhibitor scheduled move-in will be billed at 50%. Cancellations received on site will be billed 100%.

### ADDITIONAL INFORMATION

### CALCULATING YOUR TOTAL

Can't find it? Please call your Customer Account Manager (CAM) with any questions, needs or special requests.

Subtotal \_\_\_\_\_

(Transfer Subtotal to Form 9k)

Exhibiting Company: \_\_\_\_\_

Booth Number: \_\_\_\_\_

Print Name: \_\_\_\_\_

Date: \_\_\_\_\_

Authorizer's Signature: \_\_\_\_\_



5931 West Campus Circle Drive  
 Irving, Texas 75063  
 Phone: (972) 751-9400  
 Fax: (972) 751-9500  
 www.packexpo.com

October 14-17, 2018  
 McCormick Place  
 Chicago, Illinois USA

CO-LOCATED



Healthcare  
 PACKAGING  
 EXPO

October 14-17, 2018 • McCormick Place  
 Chicago, Illinois USA

## Furniture and Accessories

Discount Deadline:  
**August 27, 2018**  
 (excludes labor)

	Description	Qty	Advanced Price	Standard Price	Total
<b>5</b>	<b>Powered Seating</b>				
	810120 Naples Chair, Powered, Black Vinyl	X	\$ 337.54	\$ 482.20	=
	830122 Naples Loveseat, Powered, Black Vinyl	X	\$ 453.39	\$ 647.70	=
	830121 Naples Sofa, Powered, Black Vinyl	X	\$ 521.88	\$ 745.55	=
	81021 Roma Chair, Powered, White Vinyl	X	\$ 337.58	\$ 482.25	=
	83017 Roma Sofa, Powered, White Vinyl	X	\$ 650.68	\$ 929.55	=
	<b>Powered Tables</b>				
	820950 Ventura Communal Bar Tbl, Powered, Blk	X	\$ 622.44	\$ 889.20	=
	820955 Ventura Communal Bar Tbl, Powered, Wht	X	\$ 565.84	\$ 808.35	=
	82071 G30 Café Table, Powered, White	X	\$ 400.02	\$ 571.45	=
	82069 G30 Café Tbl w/ Grommets, Powered, Wht	X	\$ 341.88	\$ 488.40	=
	84083 Tech Desk w/ 3 Drawer Cabinet, Powered	X	\$ 286.47	\$ 409.25	=
	84084 Tech Desk, Powered, Black Metal	X	\$ 251.23	\$ 358.90	=
	82076 Sydney Cocktail Table, Powered, Black	X	\$ 300.37	\$ 429.10	=
	82073 Sydney Cocktail Table, Powered, White	X	\$ 300.37	\$ 429.10	=
	<b>Powered Product Pedestals</b>				
	85060 36" Powered Locking Pedestal, Black	X	\$ 245.38	\$ 350.55	=
	85061 36" Powered Locking Pedestal, White	X	\$ 245.38	\$ 350.55	=
	85062 42" Powered Locking Pedestal, Black	X	\$ 294.03	\$ 420.05	=
	85063 42" Powered Locking Pedestal, White	X	\$ 294.03	\$ 420.05	=
<b>Powered Banquette</b>					
8506 Center Cone	X	\$ 458.99	\$ 655.70	=	
<b>6</b>	<b>Storage</b>				
	84080 3-Drawer File Cabinet on Castors, Black	X	\$ 87.46	\$ 124.95	=
	74082 Two-Drawer File Cabinet w/ Lock	X	\$ 160.23	\$ 228.90	=
	74081 Four-Drawer File Cabinet w/ Lock	X	\$ 233.87	\$ 334.10	=
85020 Posh Shelving w/ Chrome Frame, White	X	\$ 378.66	\$ 540.95	=	
<b>7</b>	<b>Refrigerators</b>				
	75057 Small Refrigerator	X	\$ 442.08	\$ 631.55	=
8503001 Refrigerator, 14.0 Cubic Feet	X	\$1,129.70	\$1,613.85	=	
<b>8</b>	<b>Lighting</b>				
	850707 Mason Table Lamp, White/Brushed Silver	X	\$ 119.70	\$ 171.00	=
850708 Mason Floor Lamp, White/Brushed Silver	X	\$ 175.77	\$ 251.10	=	

**Cancellation Policy:** Cancellations received less than 2-weeks prior to the first day of exhibitor scheduled move-in will be billed at 50%. Cancellations received on site will be billed 100%.

### ADDITIONAL INFORMATION

### CALCULATING YOUR TOTAL

Can't find it? Please call your Customer Account Manager (CAM) with any questions, needs or special requests.

Subtotal \_\_\_\_\_

(Transfer Subtotal to Form 9k)

Exhibiting Company: \_\_\_\_\_

Booth Number: \_\_\_\_\_

Print Name: \_\_\_\_\_

Date: \_\_\_\_\_

Authorizer's Signature: \_\_\_\_\_

**9h**





5931 West Campus Circle Drive  
 Irving, Texas 75063  
 Phone: (972) 751-9400  
 Fax: (972) 751-9500  
 www.packexpo.com

October 14-17, 2018  
 McCormick Place  
 Chicago, Illinois USA

CO-LOCATED



Healthcare  
 PACKAGING  
 EXPO

October 14-17, 2018 • McCormick Place  
 Chicago, Illinois USA

## Furniture and Accessories

**Discount Deadline:**  
**August 27, 2018**  
 (excludes labor)

Description		Qty	Advanced Price	Standard Price	Total
9 Display	<b>Display Cylinders</b>				
	75020 Low Cylinder, Black, 30"W x 15"H	X	\$ 253.08	\$ 361.55	=
	75021 Medium Cylinder, Black, 18"W x 20"H	X	\$ 253.08	\$ 361.55	=
	75022 High Cylinder, Black, 24"W x 36"H	X	\$ 253.08	\$ 361.55	=
	<b>Display Cubes</b>				
	75030 Small Display Cube, Blk, 12"W x 12"L x 42"H	X	\$ 249.41	\$ 356.30	=
	75031 Medium Disp Cube, Blk, 18"W x 18"L x 36"H	X	\$ 267.08	\$ 381.55	=
	75032 Large Display Cube, Blk, 24"W x 24"L x 42"H	X	\$ 302.47	\$ 432.10	=
	<b>Computer Desk</b>				
	75079 Orion Comp Desk, Blk, 28"W x 28"D x 40.5"H	X	\$ 491.16	\$ 701.65	=
<b>Display Counter</b>					
72056 Display Counter, Black, 24"W x 49"L x 42"H	X	\$ 246.33	\$ 351.90	=	

10 Acces- sories	<b>Mobile Tablet Stands and Accessories</b>				
	850714 Mobile Tablet Stand, White	X	\$ 275.06	\$ 392.95	=
	850715 Mobile Tablet Stand, Black	X	\$ 275.06	\$ 392.95	=
	850711 Tablet Stand Brochure Holder, Black	X	\$ 27.09	\$ 38.70	=
	850712 Tablet Stand Wireless Printer Holder, Black	X	\$ 27.09	\$ 38.70	=
	850713 Tablet Stand Charging Shelf, Black	X	\$ 27.09	\$ 38.70	=
	<b>Accessories</b>				
	220121 Chrome Stanchion w/ Retractable Belt	X	\$ 86.48	\$ 123.55	=
	220118 Chrome Sign Holder	X	\$ 110.14	\$ 157.35	=
	750135 Round Literature Rack	X	\$ 231.60	\$ 330.85	=
	750136 Flat Literature Rack	X	\$ 204.96	\$ 292.80	=
	220109 Chrome Coat Tree	X	\$ 40.14	\$ 57.35	=
	220134 Brushed Aluminum Easel	X	\$ 44.56	\$ 63.65	=
	220110 Chrome Bag Rack	X	\$ 110.14	\$ 157.35	=
	10201484 Floor Standing Bulletin Board	X	\$ 204.02	\$ 291.45	=
	220106 Corrugated Wastebasket	X	\$ 13.86	\$ 19.80	=
	220107 Wastebasket	X	\$ 19.53	\$ 27.90	=

11 Drape	<b>Check color.</b>	<input type="checkbox"/> Black	<input type="checkbox"/> Blue	<input type="checkbox"/> Brown	<input type="checkbox"/> Green	<input type="checkbox"/> Flax
		<input type="checkbox"/> Gold	<input type="checkbox"/> Gray	<input type="checkbox"/> Plum	<input type="checkbox"/> Red	<input type="checkbox"/> White
	12103 Special Drape 3'h (per ft.)	X	\$ 15.12	\$ 21.60	=	
12108 Special Drape 8'h (per ft.)	X	\$ 22.51	\$ 32.15	=		

**Cancellation Policy:** Cancellations received less than 2-weeks prior to the first day of exhibitor scheduled move-in will be billed at 50%. Cancellations received on site will be billed 100%.

### ADDITIONAL INFORMATION

### CALCULATING YOUR TOTAL

Can't find it? Please call your Customer Account Manager (CAM) with any questions, needs or special requests.

Subtotal \_\_\_\_\_

(Transfer Subtotal to Form 9k)

Exhibiting Company: \_\_\_\_\_

Booth Number: \_\_\_\_\_

Print Name: \_\_\_\_\_

Date: \_\_\_\_\_

Authorizer's Signature: \_\_\_\_\_



5931 West Campus Circle Drive  
 Irving, Texas 75063  
 Phone: (972) 751-9400  
 Fax: (972) 751-9500  
 www.packexpo.com

October 14-17, 2018  
 McCormick Place  
 Chicago, Illinois USA

CO-LOCATED



Healthcare  
 PACKAGING  
 EXPO

October 14-17, 2018 • McCormick Place  
 Chicago, Illinois USA

## Furniture and Accessories

Discount Deadline:  
**August 27, 2018**  
 (excludes labor)

	Description	Qty	Advanced Price	Standard Price	Total
<b>12</b> Perfboard Bulletin Boards (See Form 9k for pictures.)	10201180 1m x 8'H Single Sided Vertical	X	\$ 173.32	\$ 247.60	=
	10201182 1/2m x 8'H Single Sided Vertical	X	\$ 130.48	\$ 186.40	=
	102040 4" Single Hook	X	\$ 2.34	\$ 3.35	=
	102060 6" Single Hook	X	\$ 2.34	\$ 3.35	=
	102080 8" Single Hook	X	\$ 2.34	\$ 3.35	=
	1020410 4'L Shelf	X	\$ 43.78	\$ 62.55	=
	10307 7-Ball Waterfall	X	\$ 31.01	\$ 44.30	=
<b>13</b> Grids (See Form 9k for pictures.)	103028 Chrome Grid Panel 2' x 8'	X	\$ 90.16	\$ 128.80	=
	103010 Black Grid Panel 2' x 8'	X	\$ 88.90	\$ 127.00	=
	103040 Grid Legs - Chrome	X	\$ 29.89	\$ 42.70	=
	103041 Grid Legs - Black	X	\$ 29.89	\$ 42.70	=
	103030 Grid Connectors	X	\$ 9.76	\$ 13.95	=
	10303 3-Ball Waterfall (for grids)	X	\$ 22.47	\$ 32.10	=
	10305 5-Ball Waterfall (for grids)	X	\$ 22.43	\$ 32.05	=
	103044 4" Single Hook (for grids)	X	\$ 2.34	\$ 3.35	=
	103046 6" Single Hook (for grids)	X	\$ 2.34	\$ 3.35	=
	103048 8" Single Hook (for grids)	X	\$ 2.34	\$ 3.35	=
<b>14</b> Accessories	15905 Fish Bowl	X	\$ 41.79	\$ 59.70	=
	109011 Ticket Tumbler - Small	X	\$ 130.66	\$ 186.65	=
	10405 Garment Rack	X	\$ 120.50	\$ 172.15	=
	10403 2-way Straight Arm	X	\$ 120.05	\$ 171.50	=
	10404 4-way Straight Arm	X	\$ 151.06	\$ 215.80	=
<b>15</b> Gondolas (See Form 9k for pictures.)	174541 Single Sided Gondola-1 meter x 4' high	X	\$ 406.60	\$ 580.85	=
	174581 Single Sided Gondola-1 meter x 8' high	X	\$ 563.01	\$ 804.30	=
	<i>Double Sided Gondolas include Base and 2 shelves per side.</i>				
	174542 Double Sided Gondola-1 meter x 4' high	X	\$ 515.66	\$ 736.65	=
	174582 Double Sided Gondola-1 meter x 8' high	X	\$ 703.78	\$1,005.40	=
	<i>Shelves for Gondolas are adjustable.</i>				
	Additional Shelf for Gondola	X	\$ 68.04	\$ 97.20	=
<b>Circle Color:</b> Black Fabric Blue Fabric Grey Fabric White Perfboard White PVC					

**Cancellation Policy:** Cancellations received less than 2-weeks prior to the first day of exhibitor scheduled move-in will be billed at 50%. Cancellations received on site will be billed 100%.

### ADDITIONAL INFORMATION

### CALCULATING YOUR TOTAL

Can't find it? Please call your Customer Account Manager (CAM) with any questions, needs or special requests.

Subtotal \_\_\_\_\_

(Transfer Subtotal to Form 9k)

Exhibiting Company: \_\_\_\_\_

Booth Number: \_\_\_\_\_

Print Name: \_\_\_\_\_

Date: \_\_\_\_\_

Authorizer's Signature: \_\_\_\_\_



5931 West Campus Circle Drive  
 Irving, Texas 75063  
 Phone: (972) 751-9400  
 Fax: (972) 751-9500  
 www.packexpo.com

October 14-17, 2018  
 McCormick Place  
 Chicago, Illinois USA

CO - LOCATED



Healthcare+  
 PACKAGING  
 EXPO

October 14-17, 2018 • McCormick Place  
 Chicago, Illinois USA

## Furniture and Accessories

Discount Deadline:  
**August 27, 2018**  
 (excludes labor)

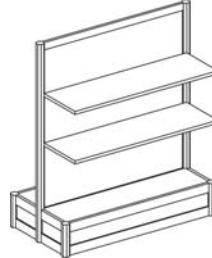
Perfboard



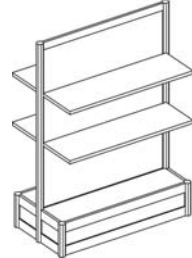
White Perfboard Shelves



Gondola - Single Sided



Gondola - Double Sided

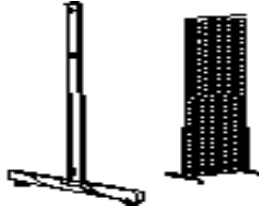


Includes Base and 2 shelves per side.

2 x 8 Grid Panels



Grid Legs



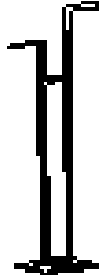
4-Way Connectors



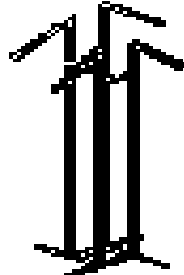
Grid Accessories



2-Way Straight Arm



4-Way Straight Arm



**Cancellation Policy:** Cancellations received less than 2-weeks prior to the first day of exhibitor scheduled move-in will be billed at 50%. Cancellations received on site will be billed 100%.

### ADDITIONAL INFORMATION

Can't find it? Please call your Customer Account Manager (CAM) with any questions, needs or special requests.

### CALCULATING YOUR TOTAL

Subtotal \_\_\_\_\_  
 Add 9% Rental Tax \_\_\_\_\_  
**TOTAL** \_\_\_\_\_

Exhibiting Company: \_\_\_\_\_

Print Name: \_\_\_\_\_

Authorizer's Signature: \_\_\_\_\_

Booth Number: \_\_\_\_\_

Date: \_\_\_\_\_

**9k**



## FURNISHINGS

# FURNISH FORWARD

---

- Sleek and professional furniture products transform your exhibit into a destination
- Extensive selection of seating, surfaces, and display fixtures provides a completely custom and comprehensive approach to your brand experience
- No assembly required. Hassle-free shipment, setup, and tear down allow your exhibitors to focus on what matters: new business
- Prices are all-inclusive and cover delivery, installation and material handling with no hidden fees



# SUPERIOR SEATING

---

**Sit back and relax** – your search for comfortable seating is over. Choose from a sleek selection of sofas, loveseats and chairs that are sure to take your exhibit design to the next level.

## ITEMS PICTURED BELOW

Swanson Swivel Chair | 810875 | **Page 12**

Silverado Cocktail Table | 82014 | **Page 21**

Powered Locking Pedestal, 42" | 85063 | **Page 31**



## SEATING

### Naples



**CHAIR** **SELECT**  
black vinyl **810119**

36"L 30"D 33"H  
⊕ Powered options available



**LOVESEAT** **SELECT**  
black vinyl **830120**

62"L 30"D 33"H  
⊕ Powered options available



**SOFA** **SELECT**  
black vinyl **830119**

87"L 30"D 33"H  
⊕ Powered options available

### Munich



**CORNER CHAIR** **SELECT**  
gray **810150**

26"L 27"D 28.5"H



**ARMLESS CHAIR** **SELECT**  
gray **810151**

22.5"L 27"D 28.5"H



**ARMLESS LOVESEAT** **SELECT**  
gray **830200**

45"L 27"D 28.5"H



**SECTIONAL - 3 PIECE** **SELECT**  
gray **830201**

93.5"L 27"D 28.5"H

### Baja

**CHAIR** **SELECT**  
white vinyl **81050**

36"L 30.5"D 28"H

**LOVESEAT** **SELECT**  
white vinyl **83020**

61"L 30.5"D 28"H



⊕ See pages 30 and 31 for all Powered options.

\*Electrical power must be ordered separately

### South Beach

**SOFA** *SELECT*  
 platinum suede **8301**

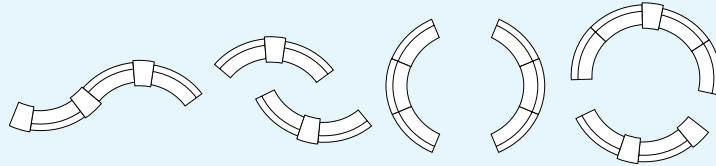
69"L 29"D 33"H

**OTTOMAN** *SELECT*  
 platinum suede **8151**

25"L 31"D 18"H



possible configurations



### Key Largo



**LOVESEAT** *SELECT*  
 black fabric **830950**

57"L 35"D 34"H



**SOFA** *SELECT*  
 black fabric **830951**

79"L 35"D 34"H



**CHAIR** *SELECT*  
 black fabric **810950**

35"L 35"D 34"H

### Allegro

**CHAIR** *SELECT*  
 blue fabric **81019**

36"L 34.5"D 30"H

**SOFA** *SELECT*  
 blue fabric **83015**

73"L 34.5"D 30"H



SEATING

Fairfax

**CHAIR** *SELECT*  
white vinyl/brushed metal **810949**  
27"L 26"D 30"H



**SOFA** *SELECT*  
white vinyl/brushed metal **830949**  
62"L 26"D 30"H



Hopi

**CHAIR** *SELECT*  
gray linen **810140**  
21"L 25"D 34"H



**LOVESEAT** *SELECT*  
gray linen **830150**  
48"L 25"D 34"H



Tangiers

**CHAIR** *SELECT*  
ivory/cream/beige fabric **810118**  
34"L 37"D 36"H



**LOVESEAT** *SELECT*  
ivory/cream/beige fabric **830220**  
57.5"L 37"D 37"H



**SOFA** *SELECT*  
ivory/cream/beige fabric **830118**  
78"L 37"D 36"H





# CASUAL SEATING

Look no further for a great variety of **informal, modern seating options**. Here you will find chairs, sofas, stools, ottomans – even sophisticated bar sets – that turn exhibits into destinations.

## OTTOMANS

### ENDLESS SQUARE OTTOMAN **SELECT**

white vinyl **815122**  
black vinyl **815123**

34"L | 34"D | 15"H



### ENDLESS CURVE OTTOMAN **SELECT**

white vinyl **815953**  
black vinyl **815952**

60.5"L | 37.5"D | 15"H



## ITEMS PICTURED BELOW

Roma Sofa, Powered | 83017 | **Page 30**

Regis Bench/Table | 82074 | **Page 23**

Swanson Swivel Chair | 810875 | **Page 12**

Regis End Table | 82075 | **Page 23**



OTTOMANS

**HALF BENCH  
OTTOMAN** *SELECT*  
white vinyl **815119**

39"L 23"D 18"H



**VIBE CUBE  
OTTOMAN** *SELECT*

blue vinyl **81518**  
red vinyl **81519**  
orange vinyl **81525**  
pink vinyl **81520**  
yellow vinyl **81517**  
black vinyl **81530**  
white vinyl **81531**  
steel blue vinyl **81532**  
silver vinyl **81533**  
purple vinyl **81534**

18"L 18"D 18"H



**MARCHE SWIVEL  
OTTOMAN** *SELECT*

gray fabric **815151**  
red fabric **815154**  
blue fabric **815159**  
linen fabric **815152**  
meadow green fabric **815157**  
pear yellow fabric **815158**  
plum fabric **815156**  
raspberry fabric **815153**  
rose quartz fabric **815155**  
white vinyl **815150**

17" Round 18"H



**EDGE LED  
CUBE OTTOMAN\*** *SELECT*  
high-density plastic **81526**

20"L 20"D 20"H





EXPOSITION

# BANQUETTES

## CENTER CONE **SELECT** 8506

38" Round | 51"H

⚡ Powered

Banquette Cone has 3 AC and 2 USB plugs built into the center cone.



## QUARTER CURVE OTTOMAN **SELECT** 8507

53"L | 22"D | 18"H

*possible configurations*



(4) quarter curve ottoman

72" Round | 18"H



(1) center cone  
(4) quarter curve ottomans

72" Round | 51"H

⚡ See pages 30 and 31 for all Powered options.  
\*Electrical power must be ordered separately

OTTOMANS



**BEVERLY BENCH OTTOMAN** *SELECT*  
black vinyl **81550**

60"L 20"D 18"H



**BEVERLY BENCH OTTOMAN** *SELECT*  
brown fabric **81551**

60"L 20"D 18"H



**BEVERLY BENCH OTTOMAN** *SELECT*  
gray fabric **81552**

60"L 20"D 18"H



**BEVERLY BENCH OTTOMAN** *SELECT*  
linen fabric **81553**  
ivory/cream/beige

60"L 20"D 18"H



**BEVERLY BENCH OTTOMAN** *SELECT*  
ocean blue fabric **81554**

60"L 20"D 18"H



**BEVERLY BENCH OTTOMAN** *SELECT*  
red fabric **81555**

60"L 20"D 18"H



**BEVERLY BENCH OTTOMAN** *SELECT*  
white vinyl **81556**

60"L 20"D 18"H

# OCCASIONAL CHAIRS

**BLACK DIAMOND  
SIDE CHAIR** **ESSENTIALS**  
71089

21"W | 23"L | 32"H

**BLACK DIAMOND  
ARMCHAIR** **ESSENTIALS**  
71090

20"W | 21"L | 33"H

**LAGUNA CHAIR** **SELECT**  
maple/chrome 810861

18"L | 19"D | 34"H



**LIMERICK® CHAIR  
BY HERMAN MILLER** **ESSENTIALS**  
gray 210108

18"W | 17.75"L | 33"H

**MADRID CHAIR** **SELECT**  
black vinyl/chrome 8102  
white vinyl/chrome 810816

30"L | 30"D | 31"H



## ITEMS PICTURED BELOW

Powered Locking Pedestal, 36" | 85061 | **Page 31**

White Vibe Cube Ottoman | 81531 | **Page 7**



OCCASIONAL CHAIRS

MEETING CHAIR **SELECT**

white vinyl **810948**  
 espresso vinyl **810835**  
 taupe microfiber **810836**

25.5"L 23.5"D 34"H



KEY WEST CHAIR **SELECT**

black fabric **8103**

31"L 31"D 31"H

MADDEN CHAIR **SELECT**

light gray vinyl **810843**

27"L 32"D 33"H



MALBA CHAIR **SELECT**

gray molded plastic **810131**  
 green molded plastic **810130**

20"L 20"D 32"H



## OCCASIONAL CHAIRS

**CHRISTOPHER CHAIR** **SELECT**  
white vinyl/chrome 810846

17"L 19"D 35"H

**ZENITH CHAIR** **SELECT**  
white/chrome 810851

19"L 22"D 32"H

**RUSTIQUE CHAIR** **SELECT**  
gunmetal 810841

20"L 18"D 31"H



**RAZOR ARMLESS CHAIR** **SELECT**  
white high-density plastic 810837

15.38"L 15.5"D 30.5"H

**SWANSON SWIVEL CHAIR** **SELECT**  
white vinyl 810875

28"L 25"D 30"H



**BERLIN STACK CHAIR** **SELECT**  
white & red plastic/chrome 810811  
white & black plastic/chrome 810810

18"L 22"D 32"H

**WENDY CHAIR** **SELECT**  
clear acrylic 810847

15"L 20"D 36"H



CONFERENCE CHAIRS

**GRAY GASLIFT CHAIR** **ESSENTIALS**

with arms **71046**  
without arms **71045**

26"W 20"L 38"H Adjustable

**LA BREA SWIVEL CHAIR** **SELECT**

charcoal gray fabric **810874**

35"L 27"D 40"H

**ALTURA GUEST CHAIR** **SELECT**

black fabric/black steel **81063**

25"L 20"D 34"H



**PRO EXECUTIVE HIGH BACK CHAIR** **SELECT**

white vinyl **810844**  
black vinyl **810946**

25"L 24"D 48"H Adjustable



**PRO EXECUTIVE MID BACK CHAIR** **SELECT**

white vinyl **810945**  
black vinyl **810944**

24"L 22"D 40"H Adjustable

**PRO EXECUTIVE GUEST CHAIR** **SELECT**

black vinyl **810947**

24"L 22"D 36"H



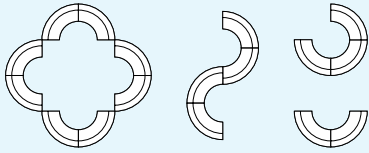


## BARS & BARSTOOLS

**MARTINI BAR** **SELECT**  
gray metal rounded bar with frosted  
glass top and chrome legs **8501**

67"L | 22"D | 45"H

possible configurations



**BLACK DIAMOND STOOL** **ESSENTIALS**  
**71088**

22"W | 18"L | 46"H

**GRAY GASLIFT STOOL** **ESSENTIALS**  
with arms **71048**  
without arms **71047**

24"W | 20"L | 46"H | Adjustable

**LAGUNA BARSTOOL** **SELECT**  
maple/chrome **810860**

18"L | 20"D | 47"H



**LIMERICK® STOOL**  
**BY HERMAN MILLER** **ESSENTIALS**  
gray **210109**

18"W | 17.75"L | 44"H

**LIFT BARSTOOL** **SELECT**  
gray vinyl/chrome **810872**  
red vinyl/chrome **810873**  
black vinyl/chrome **810871**  
white vinyl/chrome **810870**

15" Round | 23-33.5"H | Adjustable



**APEX BARSTOOL** **SELECT**  
black vinyl **810951**  
blue ultra suede **810952**  
red vinyl **810953**  
white vinyl **810954**

21"L | 21"D | 33"H



BARS & BARSTOOLS

**BANANA BARSTOOL** *SELECT*

white vinyl/chrome **810103**  
black vinyl/chrome **810104**

21"L 22"D 41"H

**ZENITH BARSTOOL** *SELECT*

white/chrome **810850**

19"L 20"D 44"H

**ZOEY BARSTOOL** *SELECT*

white vinyl/chrome **810840**  
black vinyl/chrome **810834**

15"L 16"D 26-30.5"H Adjustable



**CHRISTOPHER BARSTOOL** *SELECT*

white **810848**

19"L 15"D 41"H

**SHARK BARSTOOL** *SELECT*

white plastic/chrome **810202**

22"L 19"D 34-44"H Adjustable



**RUSTIQUE BARSTOOL** *SELECT*

gunmetal **810839**

13"L 13"D 30"H

**OSLO BARSTOOL** *SELECT*

blue plastic/chrome **810200**  
white plastic/chrome **810201**

17"L 20"D 45"H



# TURN THE TABLES IN YOUR FAVOR

---

Bring professionalism to the table with our sleek variety of surfaces and tabletops. Choose from modern glass tops and more.

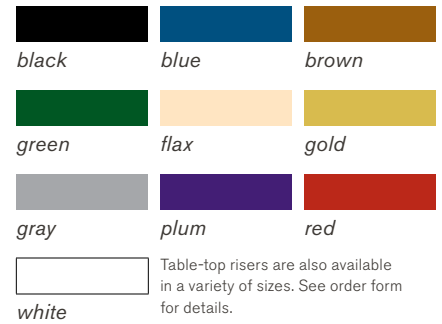
## ITEMS PICTURED BELOW

Endless Square Ottoman | 815122 | **Page 6**

Geo End Table | 82035 | **Page 22**



## DRAPED OR UNDRAPED TABLES & COUNTERS



### ESSENTIALS

#### TABLES

24"D / 30"H	3'L	4'L	6'L	8'L
Draped	124330	124430	124630	124830
Draped on Fourth Side			12404630	12404830
Undraped	125330	125430	125630	125830

#### COUNTERS

24"D / 42"H	3'L	4'L	6'L	8'L
Draped	124342	124442	124642	124842
Draped on Fourth Side			12404642	12404842
Undraped	125342	125442	125642	125842

\*Table and counter widths available in select cities



# PEDESTAL TABLES

## Soho Series



**BLACK-TOP  
CAFÉ** **ESSENTIALS**  
72069

24" Round 30"H

72067

36" Round 30"H

**BLACK-TOP MINI** **ESSENTIALS**  
72066

18" Round 18"H



**BLACK-TOP  
BISTRO** **ESSENTIALS**  
72070

24" Round 42"H

72068

36" Round 42"H

## Chelsea Series



**BUTCHER BLOCK-TOP  
CAFÉ** **ESSENTIALS**  
72063

30" Round 30"H

72064

36" Round 30"H



**BUTCHER BLOCK-TOP  
BISTRO** **ESSENTIALS**  
720163

30" Round 42"H

720164

36" Round 42"H



**HYDRAULIC BASE  
CAFÉ TABLE** **SELECT**  
maple 8201208

30" Round 29"H



**HYDRAULIC BASE  
BAR TABLE** **SELECT**  
maple 8201207

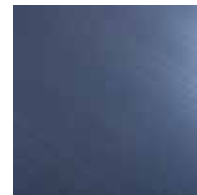
30" Round 45"H



actual color

**STANDARD BASE  
CAFÉ TABLE** **SELECT**  
blue steel 8201203

30" Round 29"H



actual color

**STANDARD BASE  
BAR TABLE** **SELECT**  
blue steel 8201204

30" Round 42"H

PEDESTAL TABLES



HYDRAULIC BASE  
CAFÉ TABLE **SELECT**  
graphite **8201209**  
36" Round 29"H



HYDRAULIC BASE  
BAR TABLE **SELECT**  
graphite **8201211**  
36" Round 45"H



HYDRAULIC BASE  
CAFÉ TABLE **SELECT**  
maple **8201206**  
36" Round 29"H



HYDRAULIC BASE  
BAR TABLE **SELECT**  
maple **8201205**  
36" Round 45"H



HYDRAULIC BASE  
CAFÉ TABLE **SELECT**  
white laminate **820126**  
36" Round 29"H



HYDRAULIC BASE  
BAR TABLE **SELECT**  
white laminate **820125**  
36" Round 45"H



MADISON HYDRAULIC BASE  
CAFÉ TABLE **SELECT**  
gray acajou **820241**  
30" Round 29"H



MADISON HYDRAULIC BASE  
BAR TABLE **SELECT**  
gray acajou **820240**  
30" Round 45"H



MADISON  
CAFÉ TABLE **SELECT**  
gray acajou **820265**  
30" Round 29"H



MADISON  
BAR TABLE **SELECT**  
gray acajou **820264**  
30" Round 42"H

# PEDESTAL TABLES



30" CAFE TABLE W/ BLACK  
BASE - WHITE TOP **SELECT**  
white laminate **8201220**  
30" Round 29"H



30" BAR TABLE W/ BLACK  
BASE - WHITE TOP **SELECT**  
white laminate **8201221**  
30" Round 42"H



30" BAR TABLE W/  
HYDRAULIC BASE  
-WHITE TOP **SELECT**  
white laminate **8201222**  
30" Round 45"H



30" CAFE TABLE W/  
HYDRAULIC BASE  
-WHITE TOP **SELECT**  
white laminate **8201223**  
30" Round 29"H



30" BAR TABLE W/  
HYDRAULIC BASE - RED  
**SELECT**  
red laminate **820920**  
30" Round 45"H



30" CAFE TABLE W/  
HYDRAULIC BASE - RED  
**SELECT**  
red laminate **820921**  
30" Round 29"H



30" BAR TABLE W/  
HYDRAULIC BASE  
-GRAPHITE **SELECT**  
gray laminate **820922**  
30" Round 45"H



30" CAFE TABLE W/  
HYDRAULIC BASE  
-GRAPHITE **SELECT**  
gray laminate **820923**  
30" Round 29"H



30" BAR TABLE W/  
HYDRAULIC BASE - SILVER  
**SELECT**  
silver **820924**  
30" Round 45"H



30" CAFE TABLE W/  
HYDRAULIC BASE - SILVER  
**SELECT**  
silver **820925**  
30" Round 29"H

OCCASIONAL, END & COCKTAIL TABLES

Silverado

END TABLE **SELECT**  
tempered glass/painted steel 82015

24" Round 22"H

COCKTAIL TABLE **SELECT**  
tempered glass/painted steel 82014

36" Round 17"H



Alondra

END TABLE **SELECT**  
glass/chrome 820252

20"L 20"D 20"H

COCKTAIL TABLE **SELECT**  
glass/chrome 820250

47"L 24"D 16"H



END TABLE **SELECT**  
wood/chrome 820253

20"L 20"D 21"H

COCKTAIL TABLE **SELECT**  
wood/chrome 820251

47"L 24"D 17"H



Atomic

36" ROUND TABLE **SELECT**  
glass/chrome 8201224

36" Round 30"H

42" ROUND TABLE **SELECT**  
glass/chrome 8201225

42" Round 30"H





# OCCASIONAL, END & COCKTAIL TABLES

## Geo

**END TABLE** *SELECT*  
wood/black steel **82028**

20"L 20"D 21"H



**COCKTAIL TABLE** *SELECT*  
wood/black steel **82027**

47"L 24"D 17"H

**END TABLE** *SELECT*  
glass/chrome **82035**

26"L 26"D 20"H



**COCKTAIL TABLE** *SELECT*  
glass/chrome **82034**

50"L 22"D 16"H

## Sydney

**END TABLE** *SELECT*  
black laminate/brushed steel **82054**  
white laminate/brushed steel **82055**

27"L 23"D 22"H



**COCKTAIL TABLE** *SELECT*  
black laminate/brushed steel **82052**  
white laminate/brushed steel **82053**

48"L 26"D 18"H

⚡ Powered options available



OCCASIONAL, END & COCKTAIL TABLES

Regis

**END TABLE** **SELECT**  
brushed metal **82075**

16"L 15.5"D 16.5"H

**BENCH/TABLE** **SELECT**  
brushed metal **82074**

47"L 15.5"D 16"H



**AURA**  
**ROUND TABLE** **SELECT**  
white metal **820844**

15" Round 22"H

**EDGE LED**  
**CUBE TABLE\*** **SELECT**  
white plastic/clear  
acrylic top **82057**

20"L 20"D 20"H



**GEO SQUARE-ROUND**  
**TABLE** **SELECT**  
glass/black steel **82043**  
glass/chrome **82044**

42"L 42"D 29"H



## OCCASIONAL, END & COCKTAIL TABLES

### Oliver

END TABLE **SELECT**  
walnut finish **82088**

22" Round 22"H

TABLE **SELECT**  
walnut finish **82087**

47"L 27"D 19"H



### Rustique

SQUARE METAL BAR TABLE **SELECT**  
gray finish **8201226**

23.75"L 23.75"D 41.25"H



### ITEMS PICTURED BELOW

Endless Curve Ottoman | 815953 | **Page 6**

Silverado Cocktail Table | 82014 | **Page 21**



CONFERENCE TABLES

**GEO CONFERENCE TABLE** *SELECT*

glass/black steel **82041**  
 glass/chrome **82051**

60"L 36"D 29"H



**MADISON CONFERENCE TABLE** *SELECT*

gray acajou **820260**

42" Round 29"H



**42" ROUND WHITE CONFERENCE TABLE** *SELECT*

white laminate **820708**

42" Round 29"H



**6' OVAL CONFERENCE TABLE** *SELECT*

granite nebula **820203**

72"L 42"D 29"H



## CONFERENCE TABLES

**MADISON 5' TABLE** **SELECT**

gray acajou **820261**

60"L 48"D 29"H



**MADISON 8' TABLE** **SELECT**

gray acajou **820262**

96"L 60"D 29"H



**MADISON 10' TABLE** **SELECT**

gray acajou **820263**

120"L 48"D 29"H

**G30 CAFÉ TABLE (MAPLE W/ GROMMETS)** **SELECT**

laminated/metal

**82058**

72"L 26"D 30"H



**G30 CAFÉ TABLE (SOLID MAPLE TOP)** **SELECT**

laminated/metal

**82067**

72"L 26"D 30"H



**G30 CAFÉ TABLE (SOLID WHITE TOP)** **SELECT**

laminated/metal

**82063**

72"L 26"D 30"H

CONFERENCE TABLES



**VENTURA BAR TABLE** *SELECT*  
**W/ GROMMET HOLES**  
*maple 820951*  
 72.25"L 26.25"D 42"H



**VENTURA COMMUNAL** *SELECT*  
**BAR TABLE**  
*black 820952*  
 72.25"L 26.25"D 42"H



**VENTURA BAR TABLE** *SELECT*  
**W/ GROMMET HOLES**  
*white 820953*  
 72.25"L 26.25"D 42"H



**VENTURA COMMUNAL** *SELECT*  
**BAR TABLE**  
*maple 820954*  
 72.25"L 26.25"D 42"H



**VENTURA COMMUNAL** *SELECT*  
**BAR TABLE**  
*white 820956*  
 72.25"L 26.25"D 42"H



**MADISON DESK** *SELECT*  
gray acajou 84075

60"L | 30"D | 29"H



**MADISON CREDENZA** *SELECT*  
gray acajou 84077

60"L | 20"D | 29"H



**MADISON BOOKCASE** *SELECT*  
gray acajou 84078

36"L | 12"D | 72"H



COMPUTER DESK / TABLE



**WORK DESK** *SELECT*  
white laminate **820706**

48"L 24"D 30"H



**MERLIN TABLE** *SELECT*  
gray laminate **820707**

46"L 29"D 30"H

ITEMS PICTURED BELOW

Key Largo Sofa | 830951 | **Page 4**

Key Largo Chair | 810950 | **Page 4**

Sydney Table, Powered | 82076 | **Page 31**

Aura Round Table | 820844 | **Page 23**

Black Diamond Stool | 71088 | **Page 14**

Soho Black Top Bistro | 36" Round - 72068 | **Page 18**





Powered options do not include charging adapters with rental and will need to be supplied by the exhibitor if needed.

## POWERED SEATING

### NAPLES CHAIR, POWERED\* **SELECT**

black vinyl **810120**

36"L 30"D 33"H



Power Panel Detail



### NAPLES LOVESEAT, POWERED\* **SELECT**

black vinyl **830122**

62"L 30"D 33"H



Power Panel Detail

### NAPLES SOFA, POWERED\* **SELECT**

black vinyl **830121**

87"L 30"D 33"H



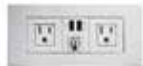
Power Panel Detail



### ROMA CHAIR, POWERED\* **SELECT**

white vinyl **81021**

37"L 31"D 33"H



Power Panel Detail



### ROMA SOFA, POWERED\* **SELECT**

white vinyl **83017**

78"L 31"D 33"H



Power Panel Detail

\*Electrical power must be ordered separately

## POWERED TABLES

**VENTURA COMMUNAL BAR TABLE POWERED\*** **SELECT**  
black **820950**

72.25"L | 26.25"D | 42"H



**G30 CAFÉ TABLE, POWERED\*** **SELECT**  
white top **82071**

72"L | 26"D | 30"H



**G30 CAFÉ TABLE, W/ GROMMETS POWERED\*** **SELECT**  
white top **82069**

72"L | 26"D | 30"H

**TECH DESK WITH 3 DRAWER FILE CABINET, POWERED\*** **SELECT**  
black metal **84083**  
desk only **84084**

60"L | 30"D | 30"H



**SYDNEY COCKTAIL TABLE, POWERED\*** **SELECT**  
black laminate/brushed steel **82076**  
white laminate/brushed steel **82073**

48"L | 26"D | 18"H

## POWERED PRODUCT PEDESTALS

**POWERED\* LOCKING PEDESTAL, 36"** **SELECT**  
black **85060**  
white **85061**

24"L | 24"D | 36"H



**POWERED\* LOCKING PEDESTAL, 42"** **SELECT**  
black **85062**  
white **85063**

24"L | 24"D | 42"H



Power Panel Detail

## BANQUETTE

**CENTER CONE** **SELECT**  
**8506**

38" Round | 51"H

Banquette Cone has 3 AC and 2 USB plugs built into the center cone.



POWERED

\*Electrical power must be ordered separately

**3 DRAWER FILE CABINET ON CASTORS** **SELECT**  
**84080**

16"L 20"D 28"H



**FILE CABINET WITH LOCK** **ESSENTIALS**  
 standard size

**TWO-DRAWER**  
**74082**

15"W 29"L 28"H

**FOUR-DRAWER**  
**74081**

15"W 29"L 50"H



**POSH SHELVING W/ CHROME FRAME** **ESSENTIALS**  
 white **85020**

36"W 18"L 72"H



## REFRIGERATOR



**SMALL REFRIGERATOR\*** **ESSENTIALS**  
**75057**

19"W 19"L 34"H



**REFRIGERATOR\*** **SELECT**  
 white - 14.0 cubic feet **8503001**

28"L 28"D 64"H

## LIGHTING



**MASON TABLE LAMP\*** **SELECT**  
 white/brushed silver **850707**

16" Round 26"H



**MASON FLOOR LAMP\*** **SELECT**  
 white/brushed silver **850708**

18" Round 55"H

\*Electrical power must be ordered separately

# DISPLAY

Some of the most essential elements of your exhibit are the surfaces on which you display your show materials. That's why we have an appealing variety of displays, from standing cylinders to sleek computer desks to draped tables and counters, to ensure your show space will be both attractive and interactive.

## DISPLAY CYLINDERS **ESSENTIALS**

black

low **75020**

30"W 15"H

medium **75021**

18"W 20"H

high **75022**

24"W 36"H

Available in rectangular sizes.



## DISPLAY CUBES **ESSENTIALS**

black

12" small **75030**

12"W 12"L 42"H

18" medium **75031**

18"W 18"L 36"H

24" large **75032**

24"W 24"L 42"H



## ORION COMPUTER KIOSK **ESSENTIALS**

black **75079**

28"L 28"D 40.5"H

28"L 28"D 40.5"H

Computer not included.



## DISPLAY COUNTER **ESSENTIALS**

black **72056**

24"W 49"L 42"H

24"W 49"L 42"H



# ACCESSORIES

We know that every exhibit is different and requires certain pieces that may be hard to find. That's why we offer an assortment of accessories that will meet your needs, from literature racks to bulletin boards to refrigerators and file cabinets. No matter the requirement, your exhibit will always stand out with these striking and functional pieces.

## TABLET STAND

### MOBILE TABLET STAND **SELECT**

white **850714**

black **850715**

14"L 13"D 44.5"H

The Mobile Tablet Stand will adjust to fit any tablet with dimensions of at least 6.75"x 9.375" but not larger than 8.5"x 2.5", including Apple iPad, Samsung Galaxy Tab and Lenovo IdeaPad.



## TABLET STAND ACCESSORIES

### BROCHURE HOLDER\* **SELECT**

black **850711**

8.625"L 1.1"D 11.325"H

### WIRELESS PRINTER HOLDER\* **SELECT**

black **850712**

3.3"L 1.9"D 5.28"H

### CHARGING SHELF\* **SELECT**

black **850713**

14.85"L 7.17"D 1"H



\*To be ordered with the tablet stand

ACCESSORIES

**CHROME STANCHION WITH 8' RETRACTABLE BELT** *ESSENTIALS*  
220121

42"H

**CHROME SIGN HOLDER** *ESSENTIALS*  
220118

Holds 22" x 66" sign

**ROUND LITERATURE RACK** *ESSENTIALS*  
750135

17"W 17"L 57"H

Revolving black display holds printed materials for easy access from 20 pockets.



**FLAT LITERATURE RACK** *ESSENTIALS*  
750136

10"W 55"H

Forward-facing black display presents printed materials in six pockets.

**CHROME COAT TREE** *ESSENTIALS*  
220109

8 1/4"W (21"W at the base) x 69 1/2"H

**BRUSHED ALUMINUM EASEL** *ESSENTIALS*  
220134

When open 5 1/4" (W) x 64 1/4" (H) 26"W x 62"H

**CHROME BAG RACK** *ESSENTIALS*  
220110

1"W (3" at center) x 41" H x 26"W



**SPECIAL DRAPING** (not pictured)

Special drape is available in a variety of colors. Refer to the order form for details.



**FLOOR-STANDING BULLETIN BOARD** *ESSENTIALS*  
10201484

48"W 96"L 78"H



**CORRUGATED WASTEBASKET** *ESSENTIALS*  
220106



**WASTEBASKET** *ESSENTIALS*  
wastebasket color may vary.  
220107