



5931 West Campus Circle Drive
 Irving, Texas 75063
 Phone: (972) 751-9400
 Fax: (972) 751-9500
 www.packexpo.com

October 14-17, 2018
 McCormick Place
 Chicago, Illinois USA

CO-LOCATED



Healthcare
 PACKAGING
 EXPO

October 14-17, 2018 • McCormick Place
 Chicago, Illinois USA

Specialty Showcases

Discount Deadline:
August 27, 2018
 (excludes labor)

Description		Quantity	Advance Price	Standard Price	Total
16 Showcases (PES is not responsible for any damage or theft to any items left or stored in locked or unlocked showcases. See Form 9m for pictures.)	FULL VISION Showcase - includes (1) 8" and (1) 10" glass shelves with adjustable brackets, and 26" high front glass display section				
	4' Length	X	\$392.00	\$560.00	=
	5' Length	X	\$392.00	\$560.00	=
	6' Length	X	\$392.00	\$560.00	=
	HALF VISION Showcase - includes (1) 10" glass shelf with adjustable brackets, 18" high front glass display section				
	4' Length	X	\$392.00	\$560.00	=
	5' Length	X	\$392.00	\$560.00	=
	6' Length	X	\$392.00	\$560.00	=
	QUARTER VISION Showcase - with 12" high front glass display section				
	4' Length	X	\$392.00	\$560.00	=
	5' Length	X	\$392.00	\$560.00	=
	6' Length	X	\$392.00	\$560.00	=
	CORNER VISION Showcase - rear access, glass shelves				
	Full Vision	X	\$448.00	\$640.00	=
	Half Vision	X	\$448.00	\$640.00	=
	Quarter Vision	X	\$448.00	\$640.00	=
	WALL Showcase - 48"L x 20"D x 66"H, with (4) 12" glass shelves, adjustable brackets, lights, locks and a 60" high sliding glass door				
	Solid	X	\$511.00	\$730.00	=
	See-Thru	X	\$511.00	\$730.00	=
	TOWER Showcases - 20"L x 20"D x 80"H, with 3 glass shelves, lights, and locks				
	20" x 20" Square	X	\$511.00	\$730.00	=

- UNLESS SPECIFIED ABOVE, ALL SHOWCASES ARE 20"D X 38"H AND HAVE LIGHTS, LOCKS, SLIDING MIRROR DOORS, GREY EXTERIOR, OFF-WHITE INTERIOR ALUMINUM FRAMES. SHOWCASES ARE AVAILABLE WITH BLACK BASES BY REQUEST.
- A \$100.00 CHARGE PER SHOWCASE FOR ONSITE ORDERS AND CHANGES MADE AT SHOW SITE.
- ALL KEYS MUST BE LEFT WITH SHOWCASE OR A CHARGE OF \$10.00 WILL BE ASSESSED.
- ELECTRICAL OUTLETS AND ELECTRICAL LABOR FOR SHOWCASE LIGHTS ARE NOT INCLUDED. SEE OUR ELECTRICAL SERVICE FORMS TO ORDER ELECTRICAL.

Cancellation Policy: Cancellations received less than 2-weeks prior to the first day of exhibitor scheduled move-in will be billed at 50%. Cancellations received on site will be billed 100%.

ADDITIONAL INFORMATION	CALCULATING YOUR TOTAL
Can't find it? Please call your Customer Account Manager (CAM) with any questions, needs or special requests.	Subtotal _____
	Add 9% Rental Tax _____
	TOTAL _____

Exhibiting Company: _____

Booth Number: _____

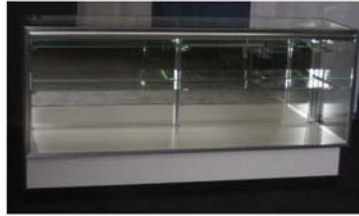
Print Name: _____

Date: _____

Authorizer's Signature: _____

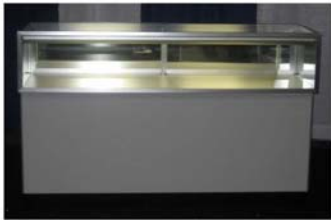
Full Vision Case

Available in 4 ft., 5ft., and 6ft. lengths. Includes 1-8" and 1-10" glass shelf with adjustable brackets with a 26" high front glass display section.



Quarter Vision Case:

Available in 4 ft., 5ft., and 6ft. lengths, and has a 12" high front glass display section.



Half Vision Case:

Available in 4 ft., 5ft., and 6ft. lengths. Includes 1-10" glass shelf with adjustable brackets, with 18" high front glass display section.



Corner Vision Case:

Available in full, half, and quarter sizes. Includes rear access, and glass shelves as seen in the other vision cases.



Cases on sides not included.

Tower Case:

Available in a 20X20 square only. The dimensions are 20"LX20"Dx80"H. Includes 3 glass shelves, lights, and locks.



Wall Case:

Available in solid and see-thru (pictured). Dimensions are 48"LX20"Dx66"H. Includes 4-12" glass shelves, adjustable brackets, lights, locks, and 60" high sliding glass.

