

- Unless specified below, all showcases are 20”D x 38”H and have lights, locks, sliding mirror doors, grey exterior, off-white interior aluminum frames. Showcases are available with black bases by request.
- Orders received after the Discount Deadline date or without payment will be charged the Standard rate and are subject to availability.
- All keys must be left with the showcase or a charge of \$10.00 will be added to your Account Summary.
- Electrical outlets and electrical labor for showcase lights are **NOT** included. See our electrical service forms to order electrical.
- **PES is not responsible for any damage or theft to any items left or stored in locked or unlocked showcases.**
- Orders placed less than 2 weeks prior to show move-in will be charged a service charge of \$100.00 per showcase.
- Cancellations received less than 2 weeks prior to the first day of exhibitor scheduled move-in will be billed at 100%.

Go to [Cyberservices](#) for fast, easy ordering.

**FULL VISION SHOWCASE**

*includes (1) 8” and (1) 10” glass shelves with adjustable brackets, and 26” high front glass display section*

Item	Qty	Advance Price	Standard Price	Total
4’ Length	X	\$552.50	\$773.50	=
5’ Length	X	\$552.50	\$773.50	=
6’ Length	X	\$552.50	\$773.50	=

**HALF VISION SHOWCASE**

*includes (1) 10” glass shelf with adjustable brackets, 18” high front glass display section*

4’ Length	X	\$552.50	\$773.50	=
5’ Length	X	\$552.50	\$773.50	=
6’ Length	X	\$552.50	\$773.50	=

**TOWER VISION SHOWCASE**

*20”L x 20”D x 80”H, with 3 glass shelves, lights, and locks*  
20” x 20” Square

X	\$630.50	\$882.70	=
---	----------	----------	---



Full View Showcase



Half View Showcase



Tower Showcase

**ADDITIONAL INFORMATION**

Can't find it? Please call your Customer Service Manager with any questions, needs or special requests.

**CALCULATING YOUR TOTAL**

Subtotal	_____
Taxes and Fees Multiplied by 8.375%	_____
Delivery Fee	\$100.00
<b>TOTAL</b>	_____

Exhibiting Company: \_\_\_\_\_

Booth Number: \_\_\_\_\_

Print Name: \_\_\_\_\_

Date: \_\_\_\_\_

Authorizer's Signature: \_\_\_\_\_

- Unless specified below, all showcases are 20”D x 38”H and have lights, locks, sliding mirror doors, grey exterior, off-white interior aluminum frames. Showcases are available with black bases by request.
- Orders received after the Discount Deadline date or without payment will be charged the Standard rate and are subject to availability.
- All keys must be left with the showcase or a charge of \$10.00 will be added to your Account Summary.
- Electrical outlets and electrical labor for showcase lights are **NOT** included. See our electrical service forms to order electrical.
- **PES is not responsible for any damage or theft to any items left or stored in locked or unlocked showcases.**
- Orders placed less than 2 weeks prior to show move-in will be charged a service charge of \$100.00 per showcase.
- Cancellations received less than 2 weeks prior to the first day of exhibitor scheduled move-in will be billed at 100%.

Go to [Cyberservices](#) for fast, easy ordering.

**QUARTER VISION SHOWCASE**

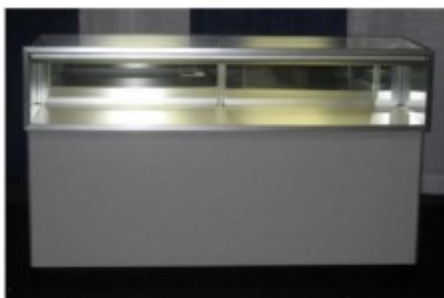
*With 12” high front glass display section*

Item	Qty	Advance Price	Standard Price	Total
4’ Length	X	\$552.50	\$773.50	=
5’ Length	X	\$552.50	\$773.50	=
6’ Length	X	\$552.50	\$773.50	=

**CORNER CASE**

*Rear access, glass shelves*

Corner Case - Full	X	\$630.50	\$882.70	=
Corner Case - Half	X	\$630.50	\$882.70	=
Corner Case - Quarter	X	\$630.50	\$882.70	=
Wall Case Solid	X	\$630.50	\$882.70	=
Wall Case - See-Thru	X	\$630.50	\$882.70	=



**ADDITIONAL INFORMATION**

Can't find it? Please call your Customer Service Manager with any questions, needs or special requests.

**CALCULATING YOUR TOTAL**

Subtotal	_____
Taxes and Fees Multiplied by 8.375%	_____
Delivery Fee	\$100.00
<b>TOTAL</b>	_____

Exhibiting Company: \_\_\_\_\_

Booth Number: \_\_\_\_\_

Print Name: \_\_\_\_\_

Date: \_\_\_\_\_

Authorizer's Signature: \_\_\_\_\_