

## Portable Solutions

**Simple, yet impactful designs created and built just for you. Yours to own after the show, making them a terrific value. All options are:**

- Big Branding. Lots of creative space to show off your marketing message.
- Easy to set up and dismantle. Do it yourself, or hire labor to assist you.
- Lightweight. Saves money in shipping and material handling.
- Durable. Use them show after show and great for internal events too.
- Good Value. Well priced investment.

### Exhibit Backwalls



### Light Boxes and Towers



### Counters



### Banner Stands



### Hanging Signs



### Accessories



# Exhibit Backwall

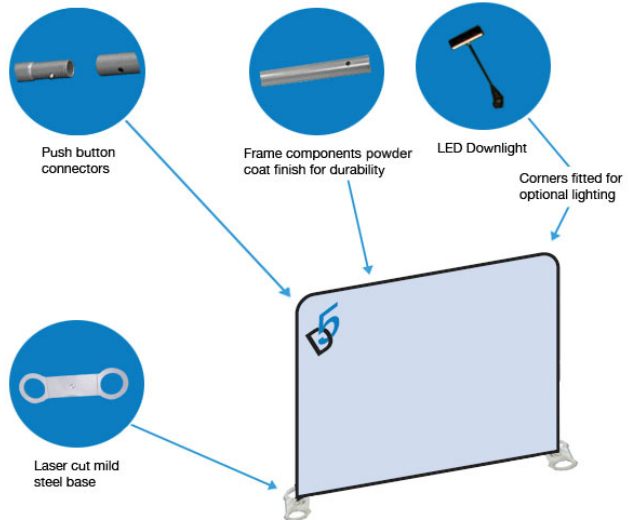
## D5 Milan FlatWall



### D5 MILAN FLATWALL (CMIL-00-002)

Seamless photorealistic fabric graphic wall on a lightweight aluminum frame with push button fit connections. Graphic is pillow case fit with a zipper closure along the bottom. Assembly time approx 8 minutes. Travel bag included. Lighting options available.

Dimensions: 115" w x 88" h  
Weight: 29 lbs  
Packed size: 13" w x 13" d x 33" l



## D5 Milan Curve



### CURVED BACKWALL (CMIL-00-005)

Seamless curved fabric graphic wall fitted on a lightweight aluminum frame with push button fit connections. Graphic is pillow case fit with a zipper closure along the bottom. Assembly time approx 8 minutes. Travel bag included. Lighting options available.

Dimensions: 114" w x 88" h  
Weight: 29 lbs  
Packed size: 13" w x 13" d x 33" l



# Exhibit Backwall

## 8ft Flat Fabric Mural with End Caps



### 8FT FLAT FABRIC MURAL (FAM-00-009)

This portable billboard makes a big impression, with the end caps giving 3D depth. The high resolution fabric graphic velcro mounts to the frame and can be left attached for shipping at the end of the show. Assembly time approx 5 minutes. Travel bag included. Shipping case & lighting options available.

Dimensions: 88.5" w x 88.5" h  
Weight: 30lbs  
Packed size: 13" w x 13" d x 33" l



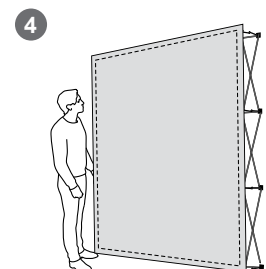
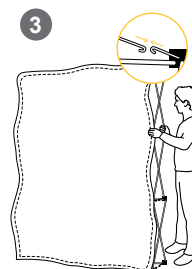
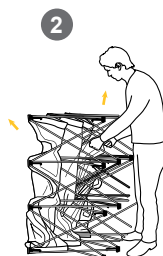
## 10ft Flat Fabric Mural with End Caps



### 10FT FLAT FABRIC MURAL (FAM-00-010)

For an even bigger impact this display provides over 86 sq ft of image. The high resolution fabric graphic velcro mounts to the frame and can be left attached for shipping at the end of the show. Assembly time approx 5 minutes. Travel bag included. Shipping case & lighting options available.

Dimensions: 117" w x 88.5" h  
Weight: 35lbs  
Packed size: 13" w x 19" d x 33" l



## Light Boxes

### 10ft Light Box with frame (Single or Double Sided)



\* Light Box uses  
LED bright  
lighting

#### 10FT LIGHT BOX

Single Sided - (10 WRF 100)  
Double Sided - (10 BL 115)

Our 10 foot wide LED lightboxes incorporate the latest trend in signage synonymous with deluxe brands and services. High-impact colors, sleek modular design and full custom capability empowers you to transform your design concepts into real life visual experiences. Internal LED Lighting maximizes visual impact of the graphic.

Dimensions: 116" w x 94" h

## Light Towers

### Back lit tower and frame (Single or Double Sided)



\* Light Tower  
uses LED bright  
lighting

#### BACK LIT TOWER

Single Sided - (7 WRF 100)  
Double Sided - (7 BL 115)

Add an LED Lightbox Tower to your exhibit. The simple groove channel is great for retrofitting fabric graphics (either single or double sided) right on the tower framing. Simple change out graphics for future use. Perfect for those just needing a little extra boost to complete an exhibit area or define a space or message.

Dimensions: 30" w x 84" h

# Counters

## Curved Podium



Fabric wrap simply connects with rear zippers providing easy access for storage.

### CURVED PODIUM (CMIP-00-001)

Lightweight aluminum frame with a wrapped seamless full color graphic. Frame, graphic, counter top and travel bag included. Cable management for ipads, monitors ect. is optional.

Load Bearing Capacity: 200 lbs  
Dimensions: 30" w x 39" h x 15" d  
Weight: 15 lbs  
Packed size: 13" w x 19" d x 33" l



# Counters

## Case to Counter Conversion



### CASE TO COUNTER CONVERSION (BCS-05-004)

Our oval rotomoulded shipping case with wheels provides secure shipping for your lighting accessories D5 Milan or Fabric Mural display and can become a counter with a full fabric graphic wrap that simply slips over the case and has a laminated wood counter top insert.

Load Bearing Capacity: 100 lbs  
Dimensions: 22" w x 37.5" h x 12" d  
Weight: 18 lbs  
Packed size: 24" w x 16" d x 38" l





# Banner Stands

## Single Sided Pull Up Banner

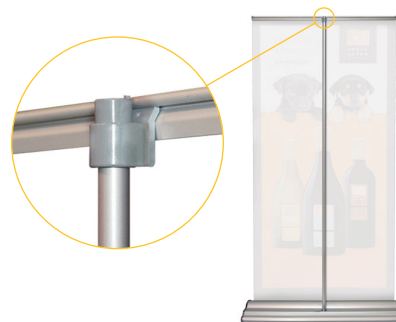


### PULL UP BANNER (BSI-00-002)

The sleek polished aluminum base unit provides all the stability for this stylish display. They can be used in pairs and threes to create back walls. The full color Poly Satin fabric graphic is included.

Simple to set up with a 3 part connected pole, the display comes complete with a durable padded travel bag that has a shoulder strap for carrying.

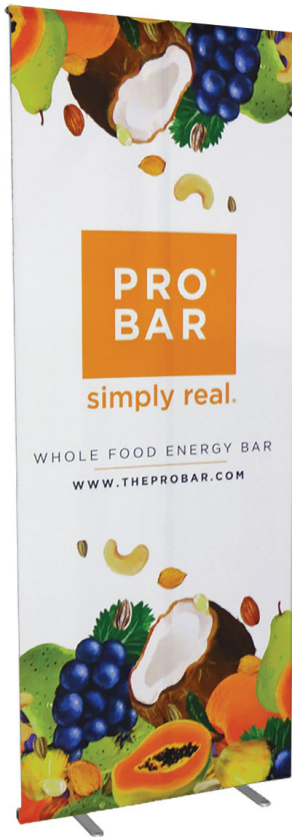
Dimensions: 33.5" w x 86" h  
 Packed Weight: 13 lbs  
 Packed size 9" w x 4" d x 36" l



Hook up to the top profile easily by inserting the end of the pole to the slot of the profile.

# Banner Stands

## Quick Stand



### QUICK STAND (BSQ-00-001)

The QuickStand is a non-retractable banner stand designed with simplicity and portability in mind. It travels well, making it perfect for all levels of marketing. Graphics are easily changed making this a great lightweight banner impact.

Dimensions: 35" w x 88" h

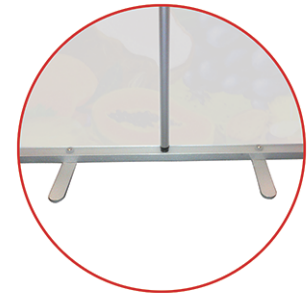
- ▶ Velcro graphics make it easy to exchange on the fly
- ▶ Simple to install
- ▶ Lightweight
- ▶ Telescopic pole to accommodate various heights



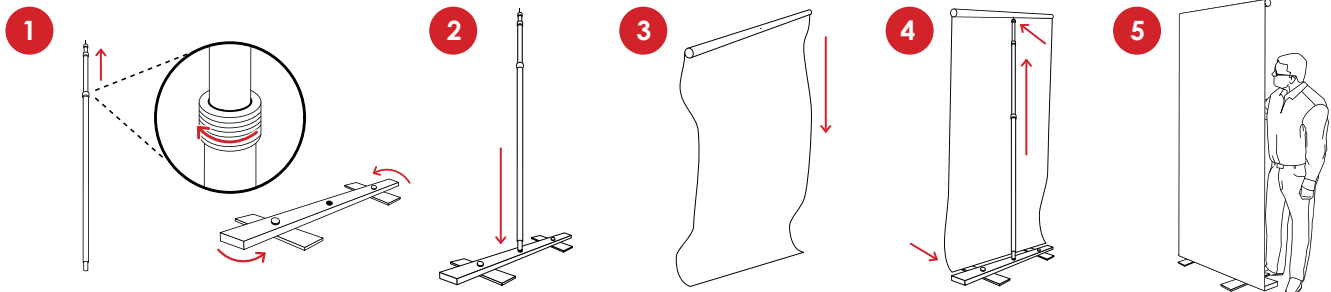
TRAVEL CASE



TOP BAR



BASE





# Hanging Signs

Aluminum frame structure with push fit connection top and bottom frames and simple allen key screws for the uprights. All components are powder coated for durability and to prevent marking of the graphic. The seamless full color fabric graphic can be printed one or both sides and have an integral internal light blocker to prevent any shadowing effects from overhead lighting. Every kit includes the frame, graphic, harness kit and travel bag. Assembly time 15 minutes.

## Circular Hanging Sign



### CIRCULAR HANGING SIGN DIMENSIONS:

Circular Frame 96" w x 42" h Hanging weight 38lbs  
**CHHA-00-005, 006**

Circular Frame 120" w x 42" h Hanging weight 45lbs  
**CHHA-00-013, 014**

Circular Frame 144" w x 42" h Hanging weight 53lbs  
**CHHA-00-019, 020**

## Square Hanging Sign



### SQUARE HANGING SIGN DIMENSIONS:

Square Frame 96" w x 96" d x 42" h Hanging weight 49lbs  
**CHSQ-00-003, 004**

Square Frame 120" w x 120" d x 42" h Hanging weight 58lbs  
**CHSQ-00-005, 006**

Square Frame 144" w x 144" d x 42" h Hanging weight 71lbs  
**CHSQ-00-007, 008**

## Accessories

### LED Milan Light

LED MILAN LIGHT (ELI-05-001) SILVER  
(ELI-05-002) BLACK



- ▶ 150W equivalent
- ▶ Cool to the touch
- ▶ Compliant with many show rules
- ▶ On/Off switch
- ▶ Fits wide variety of systems
- ▶ Available in black or silver



November 3-6, 2024  
Chicago, Illinois USA

**Portable Solutions  
FOR PURCHASE**

**Discount Deadline:  
September 16, 2024**

- PACK EXPO Services Portable Solutions offers exhibitors a quick and cost-effective solution to showcase your booth for trade show participation. **Please note items listed below are available for purchase, not rental.**
- Installation and Dismantle labor is not included. If labor is required, please login to the Exhibitor Resource Center to order online.
- Electrical service is not included. To order electrical service, please login to the Exhibitor Resource Center to order online.
- Advance pricing for orders with custom graphics will apply only if production ready artwork files are received and approved prior to the Discount Deadline date. Production ready artwork files submitted or graphic proofs approved after the Discount Deadline date will be billed at Standard rates.
- **Portable Solutions orders and production ready artwork files MUST be received and graphic proofs must be approved at least 2-weeks prior to show first move-in date. Orders submitted after this date cannot be guaranteed.**
- Once graphics are submitted, all sales are final and no refunds will be given thereafter. A 50% penalty is charged for cancellations after the Discount Deadline date and prior to 10-days prior to first day of exhibitor move-in if graphics have not been printed. No refunds will be made thereafter.
- Login to Exhibitor Resource Center to upload your Graphic files.

## EXHIBIT BACKWALLS

**All backwalls include the frame, fabric graphic, and travel bag.**

Structure Code	Item	Advance Price	Standard Price
CMIL-00-002	10 ft. D5 Milan FlatWall	\$3,683.75	\$5,525.50
CMIL-00-005	10 ft. D5 Milan Curve	\$3,901.25	\$5,851.50
FAM-00-009	8 ft. Flat Fabric Mural w/ End Caps	\$2,499.00	\$3,748.50
FAM-00-010	10 ft. Flat Fabric Mural w/ End Caps	\$3,145.50	\$4,718.50

## LIGHT BOXES/TOWERS

**All light boxes come with frame, fabric graphic, and rotomolded wheeled case.**

10WRF100	10 ft. Single Sided Litex Frame 116" x 94"*	\$6,707.75	\$10,061.50
10BL115	10 ft. Double Sided Litex Frame 116" x 94"	\$7,642.50	\$11,464.00
7WRF100	Single Sided Backlit Tower 30"w x 84"h	\$3,057.50	\$4,586.00
7BL115	Double Sided Backlit Tower 30"w x 84"h	\$3,971.75	\$5,957.50

## COUNTERS

**All counters include the frame, fabric graphic, and travel bag.**

CMIP-00-001	Curved Podium	\$1,554.00	\$2,330.75
PAC-00-002)	PALI Counter	\$2,008.50	\$3,013.00
BCS-05-004	Case to Counter (Full Oval Case and Counter Top)	\$ 485.50	\$ 728.25
BCS-02-004	Case to Counter Conversion (Full Oval Graphic Wrap Only)	\$ 422.25	\$ 633.00

## BANNER STANDS

**All backwalls include the frame, fabric graphic, and travel bag.**

BSI-00-002	Single Sided Pull Up Banner	\$ 617.00	\$ 925.25
BTW-00-018	Single Sided Quickstand Banner (Non-Retractable)	\$ 717.75	\$1,076.50

**Login to Exhibitor Resource Center to order**

(All orders must be submitted online - PDF forms will not be accepted)



November 3-6, 2024  
Chicago, Illinois USA

**Portable Solutions  
FOR PURCHASE**

**Discount Deadline:  
September 16, 2024**

## HANGING SIGNS

All Signs include the frame, fabric graphic, harness kit, and traveling bag.

Structure Code	Item	Advance	Standard
CHHA-00-005	8' Single Sided Circular Hanging Sign	\$5,110.50	\$ 7,665.75
CHHA-00-006	8' Double Sided Circular Hanging Sign	\$5,777.50	\$ 8,666.25
CHHA-00-013	10' Single Sided Circular Hanging Sign	\$6,085.50	\$ 9,128.25
CHHA-00-014	10' Double Sided Circular Hanging Sign	\$6,919.25	\$10,379.00
CHHA-00-019	12' Single Sided Circular Hanging Sign	\$7,316.00	\$10,974.00
CHHA-00-020	12' Double Sided Circular Hanging Sign	\$8,316.50	\$12,474.75
CHSQ-00-003	8' Single Sided Square Hanging Sign	\$6,234.75	\$ 9,352.25
CHSQ-00-004	8' Double Sided Square Hanging Sign	\$7,083.50	\$10,625.25
CHSQ-00-005	10' Single Sided Square Hanging Sign	\$7,480.25	\$11,220.00
CHSQ-00-006	10' Double Sided Square Hanging Sign	\$8,541.00	\$12,811.50
CHSQ-00-007	12' Single Sided Square Hanging Sign	\$8,726.00	\$13,089.00
CHSQ-00-008	12' Double Sided Square Hanging Sign	\$9,761.50	\$14,642.25

## ACCESSORIES

ELI-05-002	LED Light 150W Equivalent Spotlight (Black)	\$ 240.50	\$ 360.75
------------	---	-----------	-----------

***Login to Exhibitor Resource Center to order***

(All orders must be submitted online - PDF forms will not be accepted)