



November 3-6, 2024
Chicago, Illinois USA

Discount Deadline:
September 16, 2024

GENERAL INFORMATION AND GUIDELINES

This section includes:

- Show Rules and Regulations
- Quick Facts
- McCormick Place Exhibitor Resource Guide
- McCormick Place Emergency Procedures
- Exhibitor Application for Liability Insurance
- Important Insurance Information
- Exhibitor Appointed Contractor (EAC) Registration



November 3-6, 2024
Chicago, Illinois USA

Discount Deadline:
September 16, 2024

[Show Rules and Regulations](#)

Your Booth

All non-island booths (less than 300 square feet) will be provided an 11" x 17" identification sign with company name and booth number at no charge. Booths larger than 300 square feet may request an identification sign at no charge.

In-Line Booths

All in-line booth spaces will be automatically set with 8' high gray back drape and 36" high gray side dividers. Lakeside Lower Hall drape will be White. Please note line of sight setback rules apply to your booth type. No display material or equipment can exceed 4' in height, including drape or walls, within setback rules apply to your booth type. No display material or equipment can exceed 4' in height, including drape or walls, within setback areas.



Aisle to Aisle Booths

This combined back-to-back in-line booth faces two main aisles, but not a cross aisle, and will receive an 8' high drape for each side of the booth with adjoining exhibits. Please note line of sight setback rules apply to your booth type and drape will not be set within the setback areas. No display material or equipment can exceed 4' in height, including drape or walls, within setback areas.

Peninsula Booths

This booth faces two main aisles and one cross aisle with two exposed corners. Drapes will be set at 8' high along the side with adjoining exhibits. Please note line of sight setback rules apply to your booth type and drape will not be placed within setback areas. No display material or equipment can exceed 4' in height, including drape or walls, within setback areas.

Island Booths

Drape will NOT be automatically set for island booths. If drape is required, please login into the Exhibitor Resource Center to place your order.

- See [Rules & Regulations | PACK EXPO International](#) for booth setup guidelines.
- Carpeting/flooring is required and is the responsibility of the exhibitor. If you are bringing your own carpet/flooring for your booth, it is your responsibility to remove it from the show floor at the close of show. Failure to remove your floor covering after the show will result in an Excess Trash Removal Fee plus labor charges. Make sure to plan for removal prior to the show. If you are using an Exhibitor Appointed Contractor (EAC), please notify them of the rules regarding excess trash left behind in the booth.
- **IMPORTANT:** All direct shipments include drayage/material handling as long as your truck checks in at the PACK EXPO Services Marshalling Yard by 2:00pm on your assigned targeted move-in date and time.

Exhibit Hall Carpet and Drapes

For planning purposes, **aisle carpet** and **booth drape** will be color coded as follows:

South Hall - General Show Space	S-1400 - S-4399	Tuxedo carpet	Gray drape
North Hall - General Show Space	N-4500 - N-6399	Tuxedo carpet	Gray drape
Lakeside Upper Hall	LU-6700 - LU-8999	Tuxedo carpet	Gray drape
Lakeside Lower Hall	LL-9000 - LL-11199	Tuxedo carpet	White drape
West Hall	W-13000 - W-28099	Tuxedo carpet	Gray drape



November 3-6, 2024
Chicago, Illinois USA

Quick Facts

**Discount Deadline:
September 16, 2024**

Exhibit Hall Carpet and Drape

Pavilions:

Association Partner Pavilion
Education Pavilion
The Confectionery Pavilion
The Containers & Materials Pavilion
Healthcare Packaging Pavilion
Logistics Pavilion
The PACKage Printing Pavilion
The Processing Zone
The Reusable Packaging Pavilion

Carpet

Tuxedo
Tuxedo
Red Pepper
Midnight Blue
Tuxedo
Midnight Blue
Midnight Blue
Midnight Blue
Green

Drape / Wall

Hard Wall
Hard Wall
White
Black
White
White
White
White
White

Booth Setup

If you wish to upgrade your booth with a hard wall exhibit or furniture package, review the Exhibit Option Packages section.

If you need assistance with a custom exhibit, please contact PES.custombooths@packexposervices.com.

Discount Deadline

Place your order, submit acceptable floor plans and submit payment by **September 16, 2024**, to take advantage of discounted prices for all services. Please note: **ALL REQUIRED ORDERS AND INFORMATION MUST BE SUBMITTED ONLINE FOR LABOR RELATED SERVICES INCLUDING FLOORPLANS, LAYOUTS, TO RECEIVE THE ADVANCE PRICE.**

Show Schedule

EXHIBITOR MOVE-IN - Halls are open daily from 7am to 7pm during move-in

Please see the Target Floor Plans for information for [Inbound](#) and [Outbound](#) Target Date and Time for your truck to arrive at McCormick Place. If your company is unable to adhere to the scheduled inbound or outbound dates and check-in times assigned, you may [request a Target Change](#) from PACK EXPO Services (PES). All requests for changes must be received by Monday, September 16, 2024. PES will notify the exhibitor by email if their target date change has been approved or denied. Please contact expo@pmmi.org with any questions.

All exhibits must be fully installed by Saturday, November 2, 2024, at 1:00 pm. If the installation of an exhibit has not started by **12:00 pm** on Saturday, November 2, 2024, Show Management reserves the right to authorize PACK EXPO Services to begin the installation process at the exhibitor's expense.

All visqueen must be removed by **1:00 pm, Saturday, November 2, 2024.** If not removed, Show Management reserves the right to authorize PACK EXPO Services to remove visqueen at the exhibitor's expense. To order visqueen removal, please log in to Exhibitor Resource Center to place your order under cleaning.

EXHIBIT HOURS - ALL HALLS

Sunday	November 3, 2024	9:00 am - 5:00 pm
Monday	November 4, 2024	9:00 am - 5:00 pm
Tuesday	November 5, 2024	9:00 am - 5:00 pm
Wednesday	November 6, 2024	9:00 am - 3:00 pm



November 3-6, 2024
Chicago, Illinois USA

Quick Facts

Discount Deadline:
September 16, 2024

Show Schedule

EXHIBITOR MOVE-OUT - Halls are open daily from 7am to 7pm during move-out.

The return of empty crates will take approximately seven (7) to nine (9) hours once the aisle carpet has been removed (1-2 hours). If riggers were used to remove machinery from crates or skids, these items will not be returned automatically. Your dismantle rigging crew will return empty skids and machinery crates.

All outbound carriers must check-in to marshalling yard no later than 2:00pm on Friday, November 8, 2024 for exhibitors with targets on Friday November 8 or earlier. If carrier is not checked in prior to 2:00pm on Friday, November 8, 2024, PACK EXPO Services will reroute shipment with a carrier of PACK EXPO Services choice at the exhibitor's expense. Exhibitors with target of Saturday, November 9, 2024 must be checked in by 9:00am on that day or PACK EXPO Services will reroute the shipment with a carrier of PACK EXPO Services' choice at the exhibitor's expense.

Individual Booth Layout

An individual booth layout includes a detailed, scaled drawing of your booth space inclusive of:

- Floor Ports
- Columns
- Booth Space Dimensions

If you require this service, please log into the Exhibitor Resource Center to complete.

**Please note this does not include booth structure or machinery.*

PACK EXPO Service Hours

Our PACK EXPO Services team will be available from 8am - 5pm, from the first day of Exhibitor Move-In to the last day of Exhibitor Move-Out. Hours may be extended the day before show open and the day of show close to assist with additional exhibitor needs.

All accounts should be reviewed prior to show close to ensure accuracy of all charges. No credits will be issued after the show closes. Account summaries will be sent electronically from show-site for your review. Please send contact information including name and email for the person responsible to review all charges.

Service Contacts

If you have any questions regarding your booth at PACK EXPO International 2024, please contact us at PES.Service@packexposervices.com.

Service Contact Leads by Hall:

South Hall	Robert Richardson	(Booths S-1400 to S-4399)
North Hall	Staci Davidson	(Booths N-4500 to N-6399)
Lakeside Hall	Linda Low	(Booths UL-6700 to LL-11199)
West Hall	John LeRoy	(Booths W-13000 to W-28099)



November 3-6, 2024
Chicago, Illinois USA

Quick Facts

Discount Deadline:
September 16, 2024

Warehouse Shipments

ADVANCE RECEIVING AT THE WAREHOUSE

Warehouse Shipping Address:

PACK EXPO International 2024
Exhibiting Company Name
Booth # _____
c/o T-Force Freight and PACK EXPO Services
2300 S. Throop Street
Chicago, IL 60608

PACK EXPO Services will begin accepting crated, boxed or skidded materials on **Tuesday, September 3, 2024**, at the above address. To avoid additional charges, materials must arrive to the warehouse by **Wednesday, October 16, 2024**. The warehouse will receive shipments Monday through Friday during the hours of 8:00 am to 2:00 pm. [See Material handling rates here.](#)

Please note that PACK EXPO Services Warehouse does not accept uncrated freight such as:

- COD or Collect shipments
- A single piece of freight weighing more than 5000 pounds or
- A single piece of freight larger than 108"H x 93" W in dimension.
- Hazardous materials
- Freight requiring refrigeration or frozen storage
- * Uncrated Freight such as:
 - ◊ Loose materials
 - ◊ Pad-wrapped materials
 - ◊ Un-skidded machinery equipment

Any shipments that are unable to meet these guidelines will need to ship direct to show site.

NOTE: Cranes cannot be used at the warehouse. If you need special equipment to unload your materials at the warehouse, please contact PACK EXPO Services at 972-751-9400.

IMPORTANT: All Warehouse shipments will be charged to exhibitor account. Please see Material Handling Rates form for rates.

DIRECT TO SHOW SITE SHIPMENTS

Direct to Show Site Shipments

Show Site Shipping Address:

PACK EXPO International 2024
Exhibiting Company Name
Booth # _____
McCormick Place
c/o PACK EXPO Services
2301 South Lake Shore Drive
Chicago, IL 60616

- Show site freight must be delivered on the assigned target date. Reference the target move-in floor plan. If you cannot adhere to your scheduled target move-in date and time, please complete the [Target Change Request Form](#). For additional information on target move-in/out, please see [here](#).
- Drayage/material handling is included in your space rate, provided your shipment/truck checks-in at the PES Marshalling Yard by 2:00 pm on your assigned-targeted move-in date and time. Additional labor must be ordered for any uncrating, un-skidding, re-skidding, etc. Please log in to the Exhibitor Resource Center to order additional Forklift service. ***Do not order forklift labor to load and unload your trucks.**
- All vehicles with materials for delivery must check-in at the Marshalling Yard. (This includes privately owned vehicles POV's) Please see [Marshalling Yard Information](#) for directions and additional information.
- **Any special equipment needed for unloading will be charged separately** including cranes and oversized equipment. If you have any questions, please contact rigging@packexposervices.com.
- Any refrigerated storage required must be ordered prior to September 16, 2024. Requests received after September 16, 2024, cannot be accommodated. Please contact PES at PES.Service@packexposervices.com for refrigerated/frozen storage pricing.

International Shipments

Neither PMMI nor the McCormick Place can provide a tax ID number for customs clearance. It is the responsibility of a licensed customs broker to provide this service and ensure materials can be shipped into the United States. All freight should be consigned to a certified broker for customs clearance.

Machine Spotting

On the assigned target date for the arrival of your equipment, the exhibitor must have a representative at show-site who will ensure electrical/plumbing and carpet is down. Representative is also responsible to mark floor with location of machines and be present when spotting machines to take advantage of one-time spotting included in space rate.

Empties and Stickers

Please ensure all crates, boxes and skids are empty prior to adhering empty stickers. Please make sure they are clearly marked. Stack your skids and mark them for easy identification by color coding or stenciling. PES empty label stickers can be obtained at the PES Service Centers. Please ensure all old stickers are removed to avoid confusion on empty return.

Your installation and dismantle rigging crew removes and returns empty machinery skids and machinery crates from the booth and places them in storage as part of a rigging labor order. Please do not sign out your forklift crew until machinery skids are placed in storage.

Hanging Signs

If you require hanging sign or booth labor on the 1st day of move-out, you must confirm your labor one day prior by 2pm at the Exhibitor Service Center. Due to the high demand for Rigging crews and Booth Labor on the 1st day of show close, wait times will be longer than usual. PES will attempt to take down hanging signs as quickly as possible. If crates are required to dismantle, please refrain from ordering labor until after empty crates are returned.

Outbound Shipping

The carrier's name listed on the outbound Material Handling Agreement **MUST MATCH** the name of the carrier checking-in to the Marshalling Yard to pick up your company's freight. If the carriers do not match, **THE FREIGHT WILL NOT BE RELEASED**. Please log in to the Exhibitor Resource Center to fill out your pre-printed Material Handling Agreement (MHA) information.

Please make sure there is a contact and phone number on your MHA to answer any questions regarding your carrier pick-up in the event there are any questions. A company representative must remain onsite during the move-out to ensure freight is successfully picked up and loaded on your selected carrier. Freight is under the responsibility of the exhibitor until it is picked up.

For your convenience, PACK EXPO Services arranges for Official Carriers for the show, to be present the day the show closes/throughout move-out to provide quotes and handle all of your shipping needs. They will be located by the Exhibitor Service Center. Official Carriers are: Airways Freight, DSV Air & Sea Inc, Expogistics, Rock-It Global and T-Force Freight.

Excessive Trash and Booth Abandonment

Any excessive trash which consists of display materials, carpet, padding, crates and/or pallets will be disposed of and charged both a handling fee and disposal fee during move-out.

Excessive booth materials and/or literature left in the booth at the end of the published exhibitor move-out that is not labeled for an outbound shipment or has "Hold for Collection" stickers on it will be considered abandoned and deemed as trash.

The exhibitor will be charged for the removal and disposal of these items. Charges may include Installation & Dismantle Labor, Forklift/Rigging Labor, and/or Dumpster Fee. [See Dumpster and Disposal rates here.](#)

Safety Disclaimer

Be aware of your surroundings. You are in an active work zone. Look for trip hazards such as display material and utility cords, and machinery and equipment that are in use as well as scooters and forklifts; the drivers may not be able to see you. Stay clear of dock areas, trucks and trailers. No one under the age of 14 is permitted on the show floor at any time, no exceptions.



November 3-6, 2024
Chicago, Illinois USA

Discount Deadline:
September 16, 2024

McCormick Place Exhibitor Resource Guide

Please note: PACK EXPO Services does not use the ASUV program, as all freight unloading and charges for direct freight are included in your PACK EXPO International freight package.

In order to have visibility and oversight of Internet orders, we ask that all Internet be ordered through PACK EXPO Services.



November 3-6, 2024
Chicago, Illinois USA

**Discount Deadline:
September 16, 2024**

McCormick Place Emergency Procedures



November 3-6, 2024
Chicago, Illinois USA

Discount Deadline:
September 16, 2024

Exhibitor Application for Liability Coverage



November 3-6, 2024
Chicago, Illinois USA

Discount Deadline:
September 16, 2024

[Important Insurance Information](#)

EXHIBITOR-APPOINTED-CONTRACTOR (EAC) AND THIRD-PARTY REGISTRATION

What's an EAC?

An Exhibitor Appointed Contractor (EAC) is any company, other than the official service contractor, that is hired to provide labor and/or non-labor exhibit services (e.g., I&D, supervision, AV, carpet/flooring, photo video, etc.). For coordination and security purposes, exhibitors who choose to utilize an EAC and/or any third-party independent contractor or subcontractor for their booth at PACK EXPO International 2024, must complete the EAC Registration process by **September 16, 2024**.



Registration Program!

Exhibitors must notify PMMI (Show Management) via the Exhibitor Appointed Contractor Association (EACA) of the intent to utilize an EAC and/or third-party independent contractor or subcontractor. **Online registration is preferred**, however, hard copies of EAC registration forms will be accepted. EACs may not register themselves. This step must be completed by an authorized representative of the exhibiting company.

EAC Registration Online

Registering your EAC and third parties online via the EACA Registration System is the easiest and most timely way to notify PMMI of your intent to utilize an EAC.

Step 1: Login to your Exhibitor Resource Center*

Step 2: Scroll down on the homepage and select "Click Here" within the EAC Registration section to be automatically logged into the EAC registration site.

Step 3: Click 'SELECT EACS' and choose a Service Category.

Step 4: Continue by following the steps noted on your screen.

*If you have any questions, please email expo@pmmi.org or call +1-571-612-3200 and ask to speak with the Show Department.

EAC Registration by Form

Please fill out this form if you are unable to access the online registration system at this time. Submit one (1) form per EAC or third-party company used.

Exhibitor Name: _____ Booth No. (required): _____

EAC/Third-Party Company Name: _____

EAC Address: _____

City: _____ State: _____ Zip: _____ Country: _____

EAC Primary Contact Name: _____ Website: _____

EAC Primary Contact Phone: _____

EAC Primary Contact Email (required): _____ Secondary Email: _____

Service Category:

- | | |
|--|---|
| <input type="checkbox"/> All Services | <input type="checkbox"/> Floral |
| <input type="checkbox"/> AV | <input type="checkbox"/> Logistics |
| <input type="checkbox"/> Carpet/Flooring | <input type="checkbox"/> Photo/Video |
| <input type="checkbox"/> I&D: Booth Labor | <input type="checkbox"/> Transportation |
| <input type="checkbox"/> I&D: Supervision Only | <input type="checkbox"/> Other: |

RETURN FORM TO:

EACA

Attn: Meredith Thomason, EAC Registration

Email: meredith@eaca.com

Deadline: September 16, 2024



November 3-6, 2024
Chicago, Illinois USA

Discount Deadline:
September 16, 2024

PACK EXPO SERVICES REQUIRED FORMS

This section includes:

- Terms and Conditions
- Payment Options
- Outbound Material Handling Agreement and Labels
- Third Party Authorization



November 3-6, 2024
Chicago, Illinois USA

PES Terms and Conditions

PLEASE READ CAREFULLY

YOU ARE ENTERING A CONTRACT WHICH LIMITS YOUR POSSIBLE RECOVERY IN CASE OF LOSS OR DAMAGE.

The terms and conditions set forth below become a part of the Contract between PACK EXPO SERVICES, INC. and you, the EXHIBITOR. EXHIBITOR is deemed to have accepted these terms and conditions when any of the following conditions are met:

- THE MATERIAL HANDLING SERVICE AGREEMENT IS SIGNED;
- EXHIBITOR'S MATERIALS ARE DELIVERED TO PES'S WAREHOUSE OR TO A SHOW OR EXPOSITION SITE FOR WHICH PES IS THE OFFICIAL SHOW CONTRACTOR, OR
- AN ORDER FOR LABOR AND/OR RENTAL EQUIPMENT IS PLACED BY EXHIBITOR WITH PES, OR THE ON-SITE EXHIBITOR DATA AGREEMENT IS SIGNED.

1. Customer and Exhibitor are used interchangeably and shall refer one to the other. PACK EXPO Services and PES are also used interchangeably and shall be deemed to refer one to the other. Show refers to the event referenced above, with location, facility and date.

2. Payments are due prior to delivery of services or equipment to Customer unless other credit arrangements have been made. All payments shall be in U.S. currency, MasterCard, VISA, American Express, and Discover credit cards, or check, provided there is sufficient customer credit in the Customer's form of payment to completely satisfy the amount owed by Customer to PES. Undersigned authorizer acknowledges that all applicable charges for services rendered to the Exhibitor will be applied to the credit card on file in the event another form of payment is not tendered prior to the close of the trade show. In no instance shall any Customer be extended credit beyond 30 days after the close of the Show. If there are any outstanding balances owed by the Customer to PES which have not been paid 30 days after the close of the Show, then these shall bear an interest rate of 1-1/2% per month (18% per annum).

3. Any discrepancy in items ordered and items received or any complaint or question concerning services, etc., must be reported to the PES Service Center at the Show, in writing, immediately upon noting same. Problems will be resolved and/or any valid adjustments in Customer's account will be made at that time, and approved by the PES Project Manager in charge. No credits shall be extended for any individual service (including material handling and labor services) in excess of 15% of the billings for that service. Credits and adjustments will not be made based on information received after the Show. Exhibitors who cancel up to fourteen (14) days prior to Exhibitor Move-In will be refunded 50% of their advance payment. No refunds will be made for cancellations received less than 14 days prior to Exhibitor move-in or at show site, unless otherwise noted on specific service form.

EXHIBITOR should be advised that routine audits of Exhibitor booths for service usage are conducted during the Show. Should the result of such an audit indicate that equipment or services is in fact being used that has not been paid for, the Exhibitor will be charged for the equipment or service at the applicable rate.

4. PES reserves the right to discontinue one or all services or equipment delivery to Customer for non-payment of one or more outstanding bills should such bill not be paid before the close of the first day of the Show. Payment for any one or more of the services rendered does not in anyway release Customer from payment on the other remaining services upon presentation of invoice.

Should it become necessary after all discrepancies are resolved to employ a collection agency, then Customer agrees that all reasonable and customary collection fees shall be borne by Customer. Furthermore, should litigation ensue, the Customer and PES agree that all reasonable attorney's fees shall be borne by the non-prevailing party.

5. PES shall not be liable to Exhibitor in any respect for any claims, losses, expenses, injuries, or damages arising out of or related to the Show or Exhibitor's participation in the Show, due to any act or omission of PES, its employees or agents, or any third person, whether based on breach of contract or warranty, negligence or other tort, or strict liability. PES disclaims all warranties, express or implied, including, without limitation, warranties of merchantability and fitness for a particular purpose. PES shall not be liable to Exhibitor for any indirect, special or consequential damages, including lost profits, whether based upon a claim or action of contract, warranty, negligence, strict liability or other tort, even if PES is aware of the possibility thereof. Notwithstanding any other provision of this Agreement, the maximum liability of PES to Exhibitor will in no event exceed the lesser of (i) the amount of exhibit fees paid by Exhibitor to PES for the Show or (ii) \$5,000; recovery of such amount shall be Exhibitor's sole and exclusive legal remedy. Any claim against PES not submitted to PES within thirty (30) days of the close of the Show shall be forever waived, and no suit or action shall be brought against PES more than one (1) year after the Show.

6. Insurance and liability against theft and property damage or any costs for repair or neglect for the full replacement cost of equipment or exhibit material owned or rented by the Customer remain the complete and sole responsibility of the Customer. Insurance and liability against theft, property damage, or bodily injury occurring within the confines of the Exhibitor's booth remain the sole and complete responsibility of the Exhibitor.

7. Without limiting the provisions contained in Section 5, PES shall not be responsible for damage to uncrated materials, materials improperly packed, or concealed damage, nor shall PES be responsible in any manner for loss, theft or disappearance of Exhibitor's materials while Exhibitor's materials are in Exhibitor's possession or are located within or near the confines of the Exhibitor's booth. PES's liability shall be limited to any loss or damage which results solely from PES's negligence in the actual physical handling of the Exhibitor's materials and not for any other type of loss or

damage. PES's liability shall be limited to the physical loss or damage to the specific article which is lost or damaged while in the possession of PES, and, in any event, PES's maximum liability for any cause shall be limited to \$0.30 per pound per article with a maximum liability, of \$50.00 per item or \$1,000.00 per shipment.

Exhibitor recognizes that PES provides services as Exhibitor's agent and not as bailee or shipper unless Exhibitor contracts with PES Transportation. If any employee or subcontractor of PES shall sign a delivery receipt bill-of-lading, or other document, Exhibitor agrees that these signatories will do so as Exhibitor's agent, and Exhibitor accepts the responsibility thereof. PES or its subcontractors are authorized to note the quantities or condition of items on the Exhibitor's bill-of-lading when the actual count or condition of such items do not conform to the amount or amounts recorded by exhibitor. Correct weights with Weight Certificate must be provided, otherwise PES's or its subcontractor's estimate shall prevail in the event of any weight discrepancy.

PES shall not be responsible for loss, theft, or disappearance of materials before they are picked up from Exhibitor's booth for reloading after the Show. Bills-of-lading covering outgoing shipments, which are furnished to PES by Exhibitors, will be checked at time of actual pickup from booth and corrections made where discrepancies occur.

8. Exhibitor shall indemnify and hold harmless, PES and its employees and affiliated companies and organizations from and against all claims, demands, liabilities, suits, judgments and decrees, losses and costs and/or expenses of any kind or nature whatsoever (including costs of defense, settlement, and reasonable attorneys' fees) on account of injuries to or death of any person or damage to any property occurring directly or indirectly from the acts or omissions of Exhibitor or its employees, agents, or contractors, however such injuries or death or damage to property may be caused. Upon the request of PES, Exhibitor shall promptly defend any such demand, claim, cause of action, or suit.

9. In the case of bills submitted to parties other than the Customer, Exhibitor, or Exhibiting Company (Third Parties): such arrangements in no way release Customer, Exhibitor, or Exhibiting Company from any and all of the terms and conditions outlined herein.

10. To the extent that the performance of PES is impeded by Acts of God, fire, flood, weather, strikes or labor disruptions, civil unrest, public health risks, governmental law or action, third party conduct, or other circumstances beyond PES's reasonable control, PES shall be excused from such performance. In the event that the Show is not held for any reason, Customer shall receive a refund of the exhibitor services payment, less Customer's pro-rata share of all costs and expenses incurred and committed by PES in connection with the Show. Customer shall receive full and complete refund of overpayments following final audit after the close of the Show. PES will remit refunds to Customer at the name and address indicated on the Exhibitor Data Sheet. Customer will receive a refund for any extra overpayment above and beyond the amount which Customer owes to PES. Also provided for the Customer with the final refund shall be a final accounting showing the services or equipment ordered.

11. CREDIT CARD: We are pleased to accept orders for services, with payment being made by a credit card. By paying for these services in advance, and adhering to the deadline date, you have taken advantage of the 30% discount offered.

12. Insurance: It is understood that PACK EXPO Services is not an insurer. Insurance should be obtained by the exhibitor. It is highly recommended that exhibitors arrange All Risk coverage. This can be done by endorsements to existing policies. Exhibitor's materials should be insured from the time they leave their firm until they are returned after the close of the show.

13. PES does not involve itself in patent infringement or trademark disputes before, during, or after the Show. Exhibitors should seek their own legal counsel to resolve such issues. Nevertheless, PES reserves the right to remove any equipment that is the subject of a patent or trademark challenge.

14. These terms and conditions shall be governed by and construed in accordance with the laws of the Commonwealth of Virginia, without regard to conflicts principles. Any litigation between the parties shall, at the option of PES, be filed and prosecuted exclusively in a State or federal court in or for Fairfax County, Virginia.

15. If any provision in these Terms and Conditions is held to be invalid or unenforceable, that provision shall be construed, limited, modified or, if necessary, severed, to the extent necessary to eliminate its invalidity or unenforceability, and the other provisions shall remain unaffected.

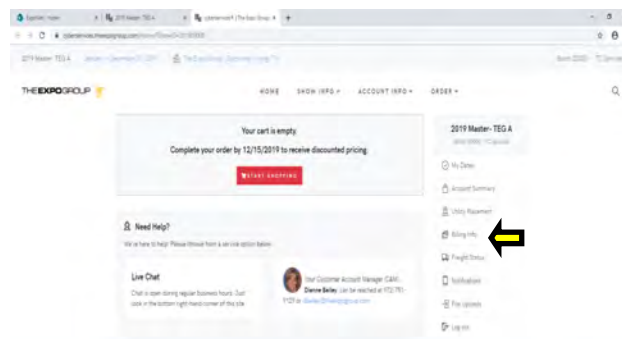
Payment Options

An authorized Credit Card MUST be on file with PACK EXPO Services before any goods or services will be rendered regardless of your method of payment.

Credit Card

PACK EXPO Services only accepts credit card information electronically. For your convenience we accept MasterCard, Visa, Discover and American Express.

Securely provide your credit card online.



Company Check

Please mail your check to 5931 Campus Circle Drive West, Irving, TX 75063 along with your company name and booth number information to PACK EXPO Services. To ensure payment is accurately reflected on your account, orders will be processed upon receipt of the original check.

Checks must include Exhibiting Company Name, Booth Number, and Name of Show.

- Wire Transfer:

FED Wire directly to:	Truist Bank
ABA / Routing Number:	053101121
SWIFT BIC:	BRBTUS33 (for International transfers)
Account Number:	1000016233081
Credit:	PACK EXPO SERVICES LLC

- Domestic ACH Transfer:

Routing Number	055002707
Account Number	1000016233081
Credit:	PACK EXPO SERVICES LLC

Third Party Agents

If PACK EXPO Services is invoicing a third party on behalf of the exhibiting company, please log in to the Exhibitor Resource Center to complete the Third Party Authorization Information so that the account can be established. Once established, credentials will be assigned for ordering and submitting payment online.

NOTE: The exhibiting company is ultimately responsible for the payment of all services rendered and payment is due prior to the last day of the event.



November 3-6, 2024
Chicago, Illinois USA

**Outbound
Material Handling
Agreement (MHA)
and Pre-Printed
Labels**

Outbound Material Handling Agreement (MHA) and Pre-Printed Labels



November 3-6, 2024
Chicago, Illinois USA

Third Party Authorization

Please fill out if you have a
Third Party organizing your
booth on your behalf

Third Party Authorization



November 3-6, 2024
Chicago, Illinois USA

Discount Deadline:
September 16, 2024

LABOR

This section includes:

- Union Jurisdictions / Exhibitor and Official Services Contractor Information
- Millwright and Booth Labor
- Lift Equipment and Labor Planning
- Lift Equipment and Labor
- Hanging Sign Information
- Hanging Sign Labor and Equipment
- Hanging Sign Required Forms
 - ◊ Structural Integrity Statement
 - ◊ Hanging Sign Information Form
- Sample Hanging Sign Floor Plan
- Advance Warehouse Hanging Sign Shipping Labels



November 3-6, 2024
Chicago, Illinois USA

Exhibitor and Official Services Contractor Information

EXHIBITOR AND OFFICIAL SERVICES CONTRACTOR INFORMATION

PACK EXPO Services (PES) is the Official Services Contractor for PACK EXPO International. As the Official Services Contractor, PES has the responsibility for material handling, electrical, air and water, all suspended rigging, general decorating and booth cleaning services.

To help you understand the Official Services Contractor responsibilities, we ask that you read and observe the following to aid in a smooth and efficient move-in and move-out of the trade show.

PES requests that exhibitors do not tip its employees by giving money, merchandise or other special considerations for services rendered. Exhibitors should not give coffee breaks other than mid-morning and mid-afternoon when employees have a fifteen minute paid break. Any attempts to solicit a gratuity by an employee for any service should be reported immediately to a supervisor of PES. PES employees are paid an excellent wage and tipping is not an accepted company policy.

PES craftsmen at all levels are instructed to refrain from expressing any disputes or directly challenging the practices of any exhibitor. All questions arising with regard to the jurisdiction or practices must be directed to a PES management representative.

Please see here for additional details: [Work rules and regulations for the McCormick Place.](#)

PER SHOW MANAGEMENT		
TASK	EXHIBITORS MAY	PES RESPONSIBILITIES
Material Handling	<ul style="list-style-type: none"> As an exhibitor you may "hand carry" material. Hand carry is defined as small items such as cartons and packages that an exhibitor is able to carry. Any mechanical assistance is limited to a small dolly. The assistance of any motorized device or pallet jack is not permitted. When exhibitors choose to "hand carry" they may not access designated material handling areas. Must use specified exhibitor hand carry areas or main entrance of the facility. In all other circumstances items should be considered material handling. Exhibitor must be in booth to take advantage of one time spot. In no circumstance is any exhibitor authorized to use PES material handling equipment for any purpose. 	<ul style="list-style-type: none"> PES has been contracted to be the exclusive provider for material handling contract services as ordered by the exhibitor. PES has the responsibility to manage all freight docks and to schedule all vehicles into and out of all designated material handling areas for the show. PES has the sole responsibility for loading and unloading all trucks, trailers, common and contract carriers at designated material handling areas. Any freight which requires assembly, labor, cranes or special equipment is not eligible for the one time spot. See Material Handling Information for more information. Drayage is included with your space rate. Do not order crews to load or unload inbound and out-bound carriers.
Plumbing	<ul style="list-style-type: none"> Exhibitors should supply their own filter or other equipment to handle moisture or water in compressed air lines. Exhibitors are not allowed to bring air compressors on the show floor. 	<ul style="list-style-type: none"> All service connections must be made by "Qualified Plumbing Personnel". See Plumbing Terms & Conditions for more information.
Telephone	<ul style="list-style-type: none"> May plug and unplug their phones, modems, faxes or credit card readers. 	<ul style="list-style-type: none"> McCormick Place Technology Services must distribute all concealed and under-carpet wiring.

EXHIBITOR AND OFFICIAL SERVICES CONTRACTOR INFORMATION

PER SHOW MANAGEMENT		
TASK	EXHIBITORS MAY	PES RESPONSIBILITIES
Electrical	<p>The following work may be performed by the exhibitor's full-time company employees with positive identification such as a medical card or payroll stub but may not be performed by your Exhibitor Appointed Contractor (EAC).</p> <ul style="list-style-type: none"> • Plug in equipment into any receptacle up to 20A/120VAC. • May install their own lights attached to booth. • May connect modems, printers, computers and keyboards, test and tune their own equipment, and run their own communications cable between machines in the same booth above the booth carpet. • Mounting of monitors (to include plasma screens, LCD & CRT) and the installation of hanging brackets. • Use of halogen lamps is restricted. Ask your CSM for details. 	<ul style="list-style-type: none"> • All electrical distribution. • All under-carpet electrical distribution. • Any additional electrical requirement needs or changes to preorders. • Distribution and connection of all power in excess of 20A/120V. • Distribution and connection of all 208V and 480V power. • Distribution of all electrical equipment necessary to provide electrical service.
Non-Electric Hanging Signs	<ul style="list-style-type: none"> • Install and dismantle a non-electric sign attached to a booth by the exhibitor's full-time employee or approved EAC. 	<ul style="list-style-type: none"> • Assembly and disassembly of hanging signs. • Hanging of non-electrical signs and decorative materials from the ceiling.
Rigging/ Electrical Hanging Signs and Truss	<ul style="list-style-type: none"> • Exhibitors <u>MAY NOT</u> install or assemble electrical hanging signs and truss. 	<ul style="list-style-type: none"> • Assembly and disassembly of electrical hanging signs, including rotating and header signs. • Lighting without dimmers. • Programmable theatrical lighting, production, related rigging and audio-visual. • Suspended trusses with or without legs that contain dimmable or programmable lighting, studio or motion picture lighting, sound system projectors and/or video wall. • Hoist ground-supported stand-alone truss whose sole purpose is overhead distribution of electrical. • Suspended truss with motorized hoist and non-dimmable and non-programmable lights. • Installing chain hoist. • Special effects equipment. • Laser lighting. • Video monitors and plasma screens including units fed by a live camera or are part of a multi-screen coordinated image.
Ground Supported Truss and Lighting	<ul style="list-style-type: none"> • Ground-supported truss that is considered to be "booth structure" or mixed-use truss may be assembled by your full-time employee or by an approved EAC. • Truss which is not assembled by PES is subject to all electrical rules and jurisdictions in regard to any electrical work in the truss. 	<ul style="list-style-type: none"> • Installation and dismantle of self-climbing and/or mechanized truss systems. • Installation and dismantle of any programmable dimmable lighting fixtures that are attached to any ground-supported truss. • Meeting room ground supported truss for the purpose of audio, visual, theatrical lighting.



November 3-6, 2024
Chicago, Illinois USA

Exhibitor and Official Services Contractor Information

EXHIBITOR AND OFFICIAL SERVICES CONTRACTOR INFORMATION

PER SHOW MANAGEMENT		
TASK	EXHIBITORS MAY	PES RESPONSIBILITIES
Booth Cleaning and Porter Service	<ul style="list-style-type: none"> Full time employees of the exhibiting company are allowed to clean/vacuum their own booth. Exhibitor Appointed Contractors (EAC's) are <u>not</u> permitted to vacuum or utilize floor cleaning equipment on the show floor. 	<ul style="list-style-type: none"> If exhibitor chooses not to clean their own booth, PES is the exclusive cleaning provider. All cleaning services must be ordered through PES. Maintenance of aisle carpet and common areas.
Booth Installation and Dismantle	<ul style="list-style-type: none"> As an Exhibitor you may choose to utilize your own personnel to set up and dismantle your exhibit. If full-time company personnel are utilized to set an exhibit, they should carry positive company identification, such as a medical identification card or payroll stub. You may hire PES to act as your Exhibitor Appointed Contractor (EAC) to perform this work. You may hire an Exhibitor Appointed Contractor (EAC) to perform this work. All EAC's must have the appropriate credentials submitted to Show Management and the facility. Use of Halogen Lamps is restricted. Ask your CSM for details. 	<ul style="list-style-type: none"> To secure PES labor, please order all labor online as required. Skilled PES Labor is available to act as your EAC.
Lift Labor	<ul style="list-style-type: none"> Plan the layout of your machinery before you come to the show. Millwrights should be ordered in advance for machine assembly and confirmed upon arrival. Exhibitor should provide any special tools needed to pick up, uncrate or assemble your machinery. 	<ul style="list-style-type: none"> Uncrate, un-skid, position and re-skid heavy machinery. Drayage is included with your space rate. Do not order crews to load or unload inbound and outbound carriers. Rigging crews will remove and return machinery crates and skids as part of fulfilling rigging labor orders placed by exhibitors.
Cameras, Audio and Video Systems	<ul style="list-style-type: none"> Install and operate their own manufactured or product systems when less than 20 amps or not suspended from the ceiling. Plug in small sound devices. Install exhibitor's own manufactured cameras by exhibitor's full time employees. Exhibitors may elect to staff certain positions: <ul style="list-style-type: none"> Technical Director Lighting Designer Video Engineer or Audio Engineer Slow Motion Machine Operator Advance Projectionist Audio Board Operator Video Board Operator Live Camera Operator Lighting Board Operator 	<ul style="list-style-type: none"> PES will be responsible for the following staffing when an integrated system draws more than 20 amps or is suspended from the ceiling: <ul style="list-style-type: none"> Crane Operator Audio Technician TV Sound Boom Operator Character Generator Advanced Audio Visual Technician Tape Operator Audio Visual Technician Video Wall Technician Video Utility Person Assistant TV Audio Tech Projectionist High Rigger Ground Rigger Lighting Tech



November 3-6, 2024
Chicago, Illinois USA

Millwright &
Booth Labor

Discount Deadline:
September 16, 2024

- Whenever possible, all work will be performed on Straight Time hours.
- Price is per person per hour.
 - One (1) hour per person minimum and thereafter charged in half (½) hour increments.
 - Includes time necessary for workers to assemble their tools, report to the booth, customer confirmation of completed work and return with Exhibitor to the designated labor check-in area.
 - Labor must be cancelled in writing at least 24 hours prior to the date for which labor was ordered to avoid a one (1) hour per man cancellation charge.
 - Exhibitor must check-in with PACK EXPO Services to confirm they are ready for labor and, return to sign out labor upon completion of the work. Failure to pick up labor at the requested time will result in an assessment of a one (1) hour per person cancellation charge.
 - Dismantle labor is not available until at least one (1) hour after the show closes. This is to allow for removal of aisle carpet and sufficient time for empty containers to be returned to the booth.
- Labor Hours:
 - Straight Time: Monday-Friday, 8:00am-4:30pm
 - Overtime: Monday-Friday, 4:30pm-8:30pm; Saturday, 6:00am-6:30pm
 - Double Time: Monday-Friday; 8:30pm-8:00am; Saturday, 6:30pm-6:00am; All day Sunday and Holidays

MILLWRIGHT LABOR

- What is Millwright Labor? Millwright labor is available to assist you in the assembly of your machine before the show and the dismantling of your machine after the show.

**Please note: 1st day show closes, all labor will be charged ST until 10pm

Item	Standard Price
Millwright Labor - ST	\$156.35
Millwright Labor - OT	\$234.60
Millwright Labor - DT	\$312.80

BOOTH LABOR

- What is Booth Labor? Booth labor is available to assist with unpacking, installation and dismantle of your booth and packing of your exhibit properties and materials after the show.
- You may choose to supervise the labor on your own or, your exhibit can be set up prior to your arrival under PACK EXPO Services (PES) supervision. Both options are listed below.
- PACK EXPO Services (PES) Supervised Labor will be completed at our discretion prior to show opening and before the deadline for the floor to be cleared. To confirm PES Supervised labor, please complete the order form online by logging into the Exhibitor Resource Center. All detailed or special instructions, set up plans, photographs and inbound and outbound shipping information must be uploaded online when ordering. You must also submit an Outbound Material Handling Agreement request for any outbound shipments online.

**Please note: 1st day show closes, all labor will be charged ST until 8:30pm

Item	Standard Price
Exhibitor Supervised Labor - ST	\$156.35
Exhibitor Supervised Labor - OT	\$234.60
Exhibitor Supervised Labor - DT	\$312.80
*PES Supervised Labor - ST	\$234.65
*PES Supervised Labor - OT	\$352.20
*PES Supervised Labor - DT	\$469.50

Login to Exhibitor Resource Center to order
(All orders must be submitted online - PDF forms will not be accepted)



November 3-6, 2024
Chicago, Illinois USA

PES Supervised
Labor Information

Discount Deadline:
September 16, 2024

PACK EXPO Services Supervised Labor Information

Advance Planning

- Rigging crews with forklifts or cranes should be ordered in advance to uncrate, unskid, position and re-skid heavy machinery.
- Labor should be ordered in advance to assemble machinery, conveyors and machinery parts, as well as for the leveling of machinery and conveyors.
- Crews do not need to be ordered to unload and reload inbound and outbound freight carriers.
- Crews should not be requested for installation until your heavy equipment has been unloaded and exhibit material is in your booth. Please note: Please allow 4-6 hours from the start of your target move-in for your heavy equipment to be unloaded.
- You must provide any special rigging equipment that may be needed to pick, uncrate or assemble your machinery, i.e. special picking bars, rolled steel shafts, special length slings, tested chains, etc. Make sure this equipment is on the back-end of the first truck to be unloaded.
- Plan the layout of your machinery before you come to the show. Submit a copy to PACK EXPO Services prior to arrival to showsite.

Machinery Skids Removal

- Rigging crews will remove and return machinery crates and skids as part of fulfilling rigging labor orders placed by exhibitors.
- IF MACHINERY SKIDS ARE NOT READY TO BE REMOVED AT THE TIME ASSEMBLY IS FINISHED, YOU MUST RETURN TO THE EXHIBITOR SERVICE CENTER AND PLACE AN ORDER FOR MACHINERY SKIDS TO BE REMOVED AT THE EXHIBITOR'S EXPENSE.

On-Site Execution

- Rigging crews ordered in advance for installation and dismantling of heavy machinery MUST be reconfirmed upon arrival to the exhibit hall at one of the Exhibitor Service Centers.
- Union laborers are ordered by PACK EXPO Services prior to 2:30 pm daily for the next day. Therefore, you must place your order, or reconfirm your existing order at one of the Exhibitor Service Centers prior to 2:00 pm for the following day.
- You must provide any special tools, i.e. socket and Allyn wrenches, metric tools, etc. Riggers only carry a twelve-inch crescent wrench, knife and ruler.
- During move-in, please DO NOT sign out your crews until your machinery skids are removed. If machinery skids are not ready to be removed at the time assembly is finished, you must return to the Exhibitor Service Center and place an order for machinery skids **to be removed at exhibitor's expense**.
- Union laborers work according to the following schedule:
 - If you order crews for 8:00 am, every effort will be made to have them there in your booth by 8:10 am. This includes any work that will be carried over from day prior.
 - There is no guarantee for an automatic 8am start time during 1st day of move-out the day after show close for all crews due to volume of requests and will be dispatched prioritizing exhibitors with the earliest target move-out dates.
 - Fifteen minute breaks at 9:30 am and 2:30 pm.
 - Thirty minute lunch break from 12:00 noon to 12:30 pm.
 - Return labor by 4:15 pm daily to avoid overtime charges, and allow time for wash-up.
- TAKE ADVANTAGE OF THE SAVINGS: Forklift crews on night of show close from 3:00 pm - 10:00 pm are billed at straight time.
- Machinery skids will not be returned automatically to your booth. You must use your forklift crew to retrieve your machinery skids from storage. Please take note of where your machinery skids were located when putting into storage.



November 3-6, 2024
Chicago, Illinois USA

Lift Equipment and Labor

**Discount Deadline:
September 16, 2024**

Crew Size: Rigging crews consists of two (2) riggers for installation and dismantle. Additional crew, equipment or larger equipment will be used if the supervisor deems it necessary to safely complete the installation and/or dismantling of a job and will be charged accordingly.

- Rigging labor is based on a one (1) hour minimum.
- Start time guaranteed only at the start of the work day.
- Exhibitor must check-in at the Freight Desk to pick-up labor.
- When scheduling dismantle labor, be sure to allow sufficient time for empty containers to be returned to your booth.
- If machinery skids are not ready to be removed at the time assembly is finished, you must return to the Exhibitor Service Center and place an order for machinery skids to be removed at Exhibitor's expense.
- Labor must be cancelled in writing at least 24 hours prior to the date for which labor was ordered to avoid a one (1) hour per man cancellation charge.

Labor Hours:

Straight Time: Monday-Friday, 8:00am-4:30pm

Overtime: Monday-Friday, 4:30pm-12:00am; Saturday, 8:00am-4:30pm

Double Time: Monday-Sunday, 12:00am-6:00am; Saturday, 4:30pm-8am; All day Sunday & Holidays

****Please note: 1st day show closes, all labor will be charged ST until 10pm**

LIFT EQUIPMENT AND LABOR

	Straight Time	Overtime	Double Time
Up to 5,000 lb. Forklift with Crew	\$540.00	\$617.00	\$720.00
4-Stage up to 5,000 lb. Forklift with Crew	\$576.00	\$653.00	\$756.00
5,001 lb. to 15,000 lb. Forklift with Crew	\$683.00	\$760.00	\$863.00
25,000 lb. to 40,000 lb. Versa Lift with 3-Person Crew	\$895.00	\$1,003.00	\$1,145.00
40,000 lb. to 60,000 lb. Versa Lift with 3-Person Crew	\$998.00	\$1,106.00	\$1,248.00
Additional Rigger—One (1) hour min. per person	\$160.00	\$199.00	\$235.00

*NOTE: Forklifts with larger capacity and crane service are available **if** requested in advance. Prices are quoted upon request and **must** be requested in advance.

***Lift equipment is not required for unloading and loading your trucks**

Login to Exhibitor Resource Center to order

(All orders must be submitted online - PDF forms will not be accepted)



November 3-6, 2024
Chicago, Illinois USA

Hanging Sign Information

Order Online BY SEPT. 16, 2024
Advance Warehouse Freight
Deadline: October 16, 2024

All Exhibitors MUST HAVE PRIOR APPROVAL from PACK EXPO Services to install a hanging sign.

Hanging Sign Labor and Equipment Rules & Regulations

- All overhead hanging elements must be assembled, installed, and disassembled by PACK EXPO Services.
- Overhead hanging signs are to be sent in separate containers directly to the advance warehouse using the Hanging Sign Labels. This container must arrive by the warehouse shipping deadline. If these procedures are not followed, PACK EXPO Services cannot guarantee the hanging of your sign or advance pricing.
- All ceiling rigging must conform to show management rules and regulations, and facility limitations.
- Hanging signs are not permitted above 14' from the floor to the top of the sign due to low ceiling height for Lakeside Center Hall E (Lakeside Lower) and North Hall B2.
- For signs other than banners, include blueprint or drawing with detailed information so hanging anchor points can be determined. For signs other than banners or stretched Pole-pocketed pillow-cased fabric signs an engineer stamped drawing is required which depicts all anchor points and bridling if allowed.
- Regarding sign placement, note that the ceiling structure and relation to the support beams may require your sign to be moved from your specified location.
- Set up instructions must be provided for signs needing assembly.
- All hardware (nuts and bolts) must be shouldered, forged, stamped, and rated for overhead lifting. PACK EXPO Services will inspect and replace all non-compliant hardware. All additional hardware will be charged accordingly.
- Electrical signs must be in working order and in accordance with the National Electrical Code. Electrical service requirements must be ordered in advance from the electrical service provider.
- It is at PACK EXPO Services discretion to determine the proper lifting device to use within a facility.
- **It is at PACK EXPO Service's discretion to determine the proper lifting device to use within a facility.**
- **Hanging signs and/or overhead hanging components weighing over 250 lbs. or less are hung by PES. Any rigged object including signage over 250 lbs may require the use of an additional lifting device. Some venues may have a lower threshold. Please contact us for additional rules or restrictions that may apply.**

Benefits to Advance Warehouse Shipping

- By shipping your hanging sign to the advance warehouse, you will save money by guaranteeing advance rates.
- To receive advance rates:
- Hanging Sign must be received at the advance warehouse by **October 16, 2024**.
- Hanging signs are to be sent in separate containers directly to the advance warehouse using the enclosed Hanging Sign Labels.

Hanging Sign Instructions:

- **Submit your hanging sign request. Your request must be submitted and approved by Show Management by September 16, 2024 and shipped to the advance warehouse to receive advance rates.**
- Submit Hanging Sign order online by **September 16, 2024**.
- Structural Integrity and Hanging Sign information to be submitted when ordering online.
- Hanging signs must be shipped to the advance warehouse to receive the advance rates.
- Submit any orders for Truss/Lighting and Motor Equipment as required online (if applicable).
- Your hanging sign diagram must include the following:
 - Hang point locations - *Hang point: Any point on sign that cable is connected to hang/support sign
 - Height above the floor of each hang point
 - Weight for each hang point that will be suspended
 - Plan showing the location of the hang points and the structure as it pertains to the overall exhibit
- **If any hang points supports are over 200 lbs., notify PES immediately for special authorization.**

PLEASE NOTE: If your sign requires electrical for lights, AV, motors or truss, additional electrical labor will be required and lift charges will be billed using the electrical condor rates.

If ALL of the above steps are met, your sign will be hung by PES at the most convenient time based on schedule and freight congestion. You will be charged Standard Rates if any of the steps listed above are NOT met, OR if you specifically request to be present to supervise your sign installation.



November 3-6, 2024
Chicago, Illinois USA

Hanging Sign Information

Order Online BY SEPT. 16, 2024
Advance Warehouse Freight
Deadline: October 16, 2024

All Exhibitors MUST HAVE PRIOR APPROVAL from PACK EXPO Services to install a hanging sign.

Booth Height Restrictions for in-line, aisle-to-aisle, peninsula and island booths:

The TOP of the hanging material must NOT exceed the height restriction for your booth type and size.

- **Booths under 599 sq. ft.** Hanging signs are NOT permitted.
- **Booths 600 - 1,499 sq. ft.** are allowed a maximum height of 14' for all display materials including logos, graphics and hanging signs.
- **Booths 1,500 sq. ft. and over** are allowed a maximum height of 18' for all display material including logos, graphics and hanging signs.

Rigged structures

- PACK EXPO Services requires a stamped certification from a design professional (Civil or Structural Engineer) registered in the United States affirming structural integrity, calculations, and specifications for any custom-built suspended elements such as but not limited to signs, lightboxes, headers, video wall surrounds, and entry portals. For additional assistance regarding these requirements, please contact PACK EXPO Services.

Tie-Offs

- PACK EXPO Services reserves the right to request a stamped certification from a design professional (Civil or Structural Engineer) registered in the United States affirming structural integrity, calculations and specifications and/or a peer review from such registered design professional for attachment of any structure to provide additional support terminating to the venue (Ex. Tie-off of header, seismic lines, tie-off of video walls). If you anticipate needing this service, please contact PACK EXPO Services for review and preauthorization.

Schedule and supervision

- PACK EXPO Services will begin to assemble and hang the signs as soon as the hall is accessible as long as the order and the sign are received by the appropriate deadline dates.
- Scheduling is done on a first come, first serve basis. Requested dates and times cannot be guaranteed.
- Supervision for assembly and disassembly of overhead hanging signs can be provided by PACK EXPO Services, or by your company representative, display house, independent or lighting contractor.



November 3-6, 2024
Chicago, Illinois USA

Hanging Sign Labor & Equipment

RETURN BY SEPT. 16, 2024
Advance Warehouse Freight
Deadline: October 16, 2024

• The Structural Integrity Statement and the Hanging Sign Information forms must be completed online in order to have your hanging sign approved.

- Show site labor rates will apply to all hanging sign orders placed at show site.
- Rates for service are per lift and crew, per hour with a half hour minimum and thereafter in half hour increments.
- Labor hours and invoicing will be in compliance with MPEA Legislation.
- Lift with crew consists of equipment, operator and rigger.
- Additional Crew and/or equipment will be used if the supervisor deems it necessary to safely complete the installation and/or dismantling of a job and it will be charged accordingly.
- PACK EXPO components, such as cable, clamps, etc. must be used to hang a sign.
- Hang Point
- OSHA (Occupational Safety Health Administration) has clearly stated that head protection must be worn where hazards of objects falling from above exists. Where there is a risk of injury from overhead work, head protection must be worn. This is applicable to employees, contractors (including EAC's) exhibitors and visitors when working at or visiting locations while engaged in overhead operations where the hazard of falling objects exists. Appropriate signage will be displayed on the show floor indicating hard hat areas and if circumstances warrant, the area may be cordoned off with safety measures easily recognizable.

Labor Hours:

Straight Time: Monday-Friday, 8:00am-4:30pm
Overtime: Monday-Friday, 4:30pm-12:00am; Saturday, 8:00am-4:30pm
Double Time: Monday-Sunday, 12:00am-6:00am; Saturday, 4:30pm-8am; All day Sunday & Holidays

****Please note: 1st day show closes, all labor will be charged ST until 10pm**

HANGING SIGN LABOR

Item	Advance Price	Standard Price
Condor w/ Crew - Blended Rate - Decorator <i>*Non Electrical</i>	\$802.00	\$950.00
Condor w/ Crew - Blended Rate - Electrical	\$802.00	\$950.00
Decorator - Assembly/Disassembly Labor -Blended	\$163.10	N/A
Electrical - Assembly/Disassembly Labor - Blended	\$153.55	N/A
Per Hang Point - each *taxable	\$144.05	N/A

**Hang point: Any point on sign that cable is connected to hang/ support sign*

TRUSS AND MOTOR EQUIPMENT

Item	Advance Price	Standard Price
1-Ton Hoist <i>*Power not included</i>	\$623.30	\$890.45
1/2-Ton Hoist <i>*Power not included</i>	\$600.90	\$858.45
<i>*Temporary hoist power must be ordered separately and cannot be ordered in conjunction with any other outlet.</i>		
20.5" Box Truss - (per foot) - Silver	\$29.95	\$42.80
12" Box Truss (per foot) - Silver	\$26.95	\$38.50
Corner Blocks - Silver	\$88.40	\$126.30
Small Rotator (under 100 lbs - Requires Electric)	\$315.40	\$450.60
Large Rotator - Requires Electric	\$629.30	\$899.00

Login to Exhibitor Resource Center to order

(All orders must be submitted online - PDF forms will not be accepted)



November 3-6, 2024
Chicago, Illinois USA

Structural Integrity Statement

RETURN FORMS BY SEPT. 16, 2024
Advance Warehouse Freight
Deadline: August 25, 2023

Structural Integrity Statement



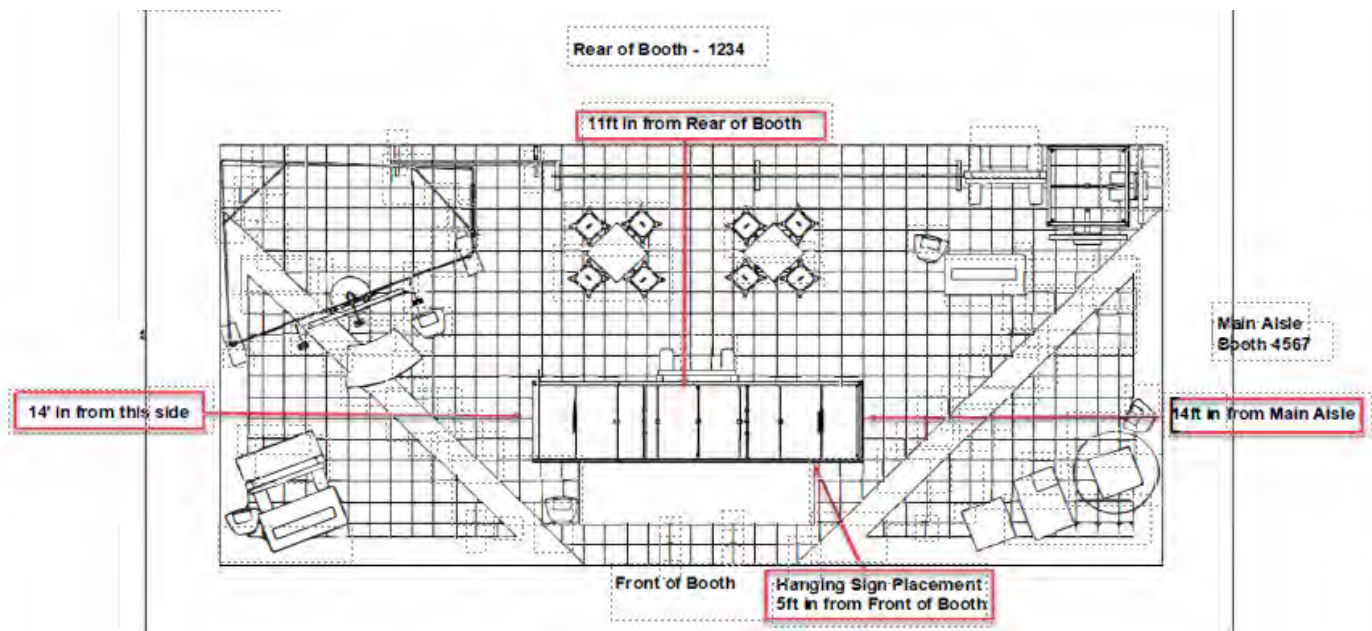
November 3-6, 2024
Chicago, Illinois USA

Hanging Sign Information

RETURN FORMS BY SEPT. 16, 2024
Advance Warehouse Freight
Deadline: October 16, 2024

Hanging Sign Information Form

Please make sure you identify all neighboring booths. Placement is subject to approval by Show Management. Review Rules and Regulations prior to submitting this form. Please see below for sample of floorplan that should be submitted with orders.



Exhibiting Company: _____

Booth Number: _____

Print Name: _____

Date: _____

Authorizer's Signature: _____



November 3-6, 2024
Chicago, Illinois USA

ADVANCE WAREHOUSE HANGING OVERHEAD SIGN

To:

(EXHIBITOR)

(BOOTH #)

PACK EXPO Services

c/o TForce Freight and PACK EXPO Services (PES)

2300 S. Throop Street

Chicago, IL 60608

Name of Convention:

PACK EXPO International 2024

Do NOT deliver prior to September 3, 2024

Must arrive by October 16, 2024



November 3-6, 2024
Chicago, Illinois USA

Discount Deadline:
September 16, 2024

BOOTH SERVICES

This section includes:

- Basic Furniture Package
- Custom Exhibits
- Exhibit Solutions Rental Exhibits
- Perspective Rental Exhibits
- Portable Solutions - Exhibits FOR PURCHASE
- Flooring and Carpet
- Cleaning Service
- Dumpster and Disposal Service
- Furniture and Accessories
- Glass Showcases
- Graphics and Signs
- Graphic Submission Guidelines

- Basic Furniture Package is available for all booths 225 sqft and below. Please login to the Exhibitor Resource Center to order.
- There are no substitutions, or credit given for unused package items. Please login to the Exhibitor Resource Center to place order for additional services and furnishings.
- Cancellations received on site will be billed 100%.
- Note: Price includes 9% sales tax on all taxable items.

BASIC FURNITURE PACKAGE

Includes:

- 8' high gray backwall drape **Included with booth*
- 3' high gray sidewall drape **Included with booth*
- 11" x 17" company identification sign **Included with booth*
- 16oz Standard Cut Carpet **Indicate carpet color choice below*
- Daily Booth Vacuuming
- 1 - 6' x 30" draped table **Indicate table drape color choice below*
- 2 - Black side chairs
- 1 - Wastebasket
- 1 - 120 Volt 500 Watt electrical outlet **standard placement*
- Table drape color available: Black, Blue, White, Red, Gray
- Carpet color available, Gray, Tuxedo, Black, Midnight

	Advance Price	Standard Price
10' x 10'	\$1,431.80	\$2,047.00
10' x 15'	\$ 1,524.90	\$2,184.20
10' x 20'	\$2,064.65	\$2,952.50
15' x 15'	\$1,887.80	\$2,705.50



Login to Exhibitor Resource Center to order
(All orders must be submitted online - PDF forms will not be accepted)



November 3-6, 2024
McCormick Place
Chicago, IL USA

You Have Options

WITH PACK EXPO SERVICES



WORK WITH US AND

Make an Impact

Get noticed on the show floor with a booth built just for you! Not the creative type? We will work with you to effectively tell your brand's story while giving you the opportunity to stand out from the crowd.

LEARN THE WAYS YOU CAN

Save on Cost

Leveraging a custom designed booth will save you money on shipping, carpet, furniture, and accessories while giving you the advantage on the show floor.



MEET YOUR

Dedicated Team

Your goals, objectives, and ROI are important to us too! Let us worry about the logistics. We're with you before, during, and after the show. Your success is our success.

START GETTING

VIP Treatment

You will receive more flexibility and efficiency during exhibitor move in and move out. Show up and exhibit. Let us handle the rest.



Before



Transform
Your
Booth

After



Don't settle for a basic booth. Contact us today!

PES.custombooths@packexposervices.com



Exhibit Rental Solutions

PACK EXPO Services can provide you a complete rental exhibit in a style that fits your needs and at a price that fits your budget. You pay no design fees, no shipping fees, no material handling fees and no repair or refurbishing fees. Make a bigger splash and order the Designer version which includes graphics designed just for you.

Each rental includes header, lights, installation and dismantle labor. Designer versions include custom graphics. See item descriptions for more details. If you should have any questions or to place an order, please feel free to contact your Customer Service Manager for additional assistance at pes.service@packexposervices.com.

Be sure to check out our Perspective Line rentals if you are seeking a more exclusive design.

Powered by

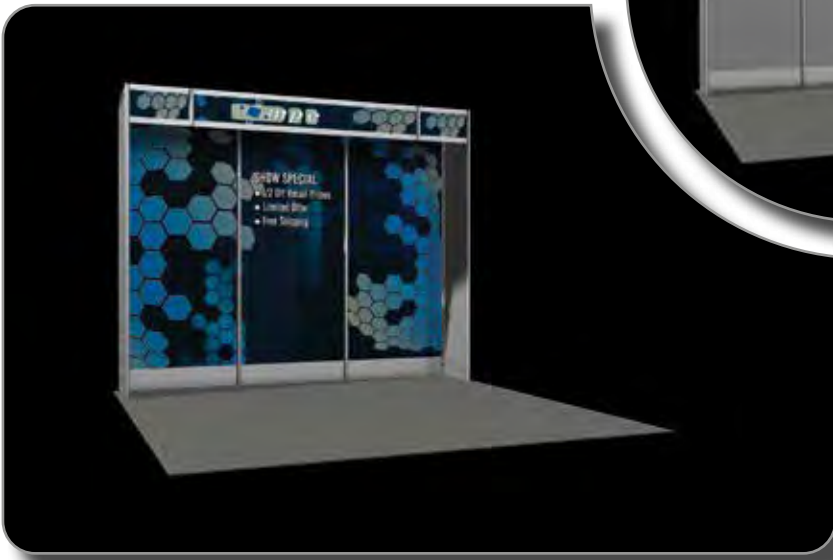
THE EXPO GROUP
Architects for connecting communities.™

10' Exhibit Options - 8' H

A100B 10' Basic with Header



A100D 10' Designer with Header *Includes Custom Graphics



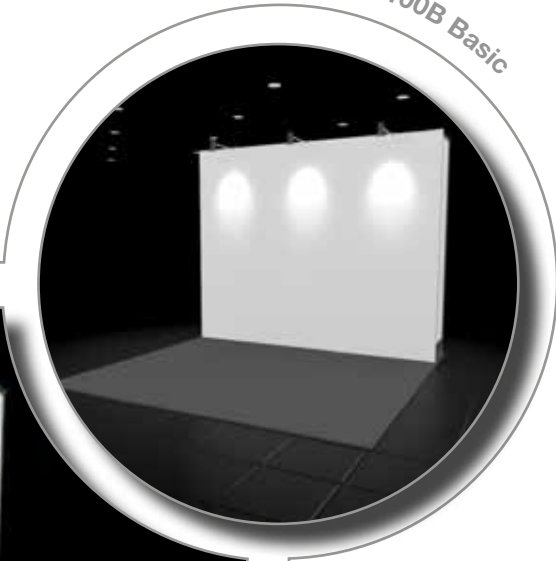
Rental Includes:

- Labor to Install & Dismantle
- (3) Stem Lights
- Available Colors: Black, Grey, White, Blue

Carpet and power for stem lights not included. Please see Flooring Options & Electrical order forms for rates

Refer to page 8 & 9 for various counters, shelves, and other accessories.

B100B Basic



B100D Designer *Includes Custom Graphics

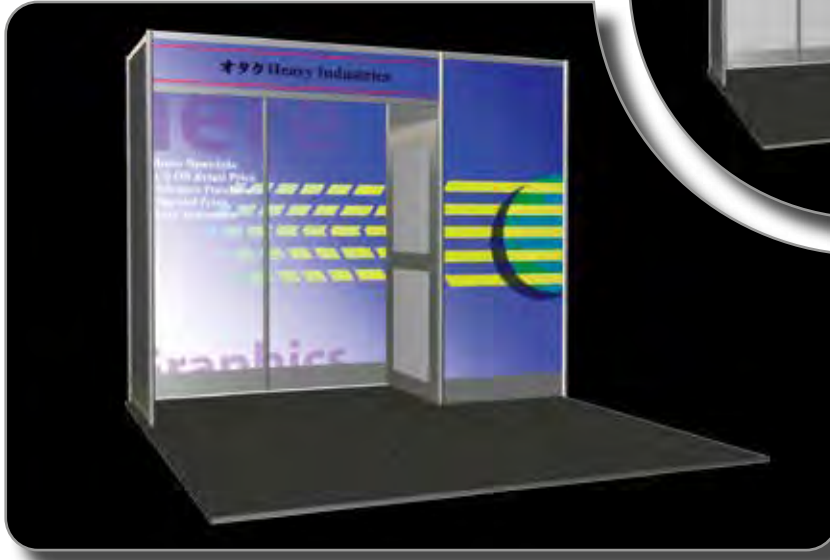


Rental Includes:

- Labor to Install & Dismantle
- (3) Stem Lights
- Available Colors: Black, Grey, White, Blue

Carpet and power for stem lights not included. Please see Flooring Options & Electrical order forms for rates

D100D Storage Room Designer *Includes Custom Graphics



D100B Storage Room Basic

Rental Includes:

- Labor to Install & Dismantle
- (2) Stem Lights
- Storage Room
- Available Colors: Black, Grey, White, Blue

Carpet and power for stem lights not included. Please see Flooring Options & Electrical order forms for rates

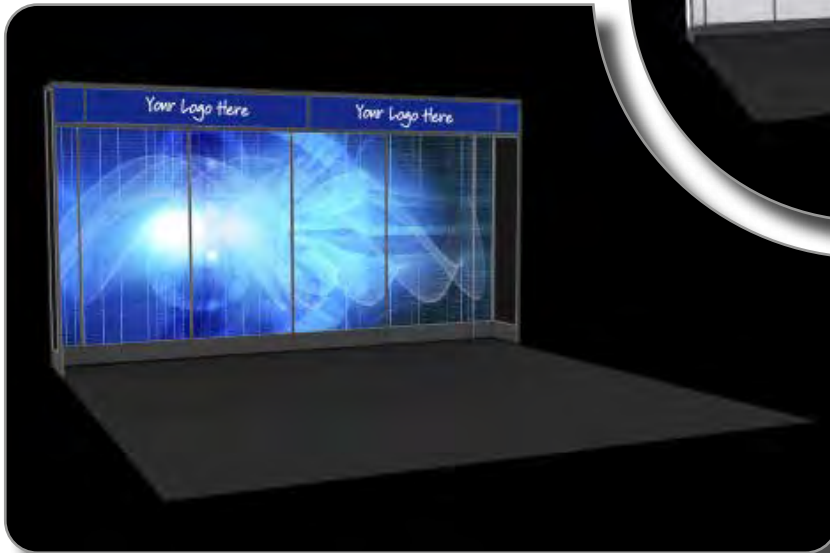
Refer to page 8 & 9 for various counters, shelves, and other accessories.

15' Exhibit Options - 8'H



A150D 15' Designer with Header

*Includes Custom Graphics



A150B 15' Basic with Header

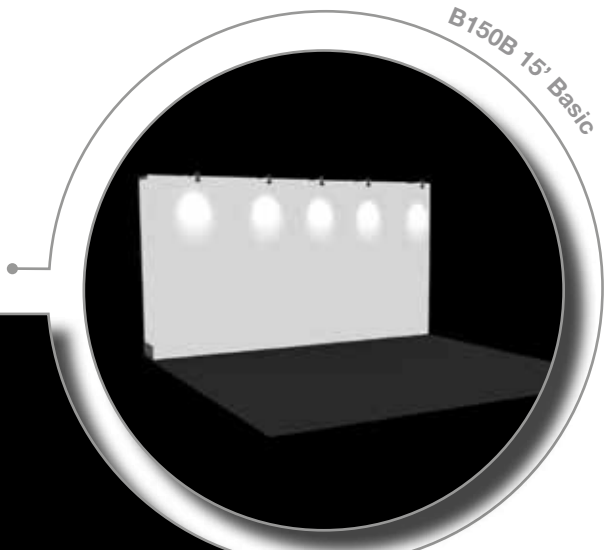
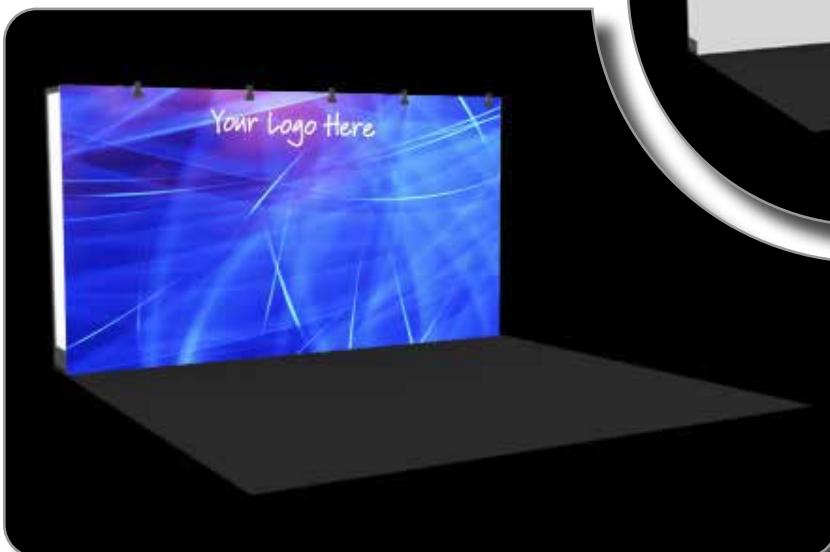
Rental Includes:

- Labor to Install & Dismantle
- (4) Stem Lights
- Available Colors: Black, Grey, White, Blue

Carpet and power for stem lights not included. Please see Flooring Options & Electrical order forms for rates

Refer to page 8 & 9 for various counters, shelves, and other accessories.

B150D 15' Designer *Includes Custom Graphics



B150B 15' Basic

Rental Includes:

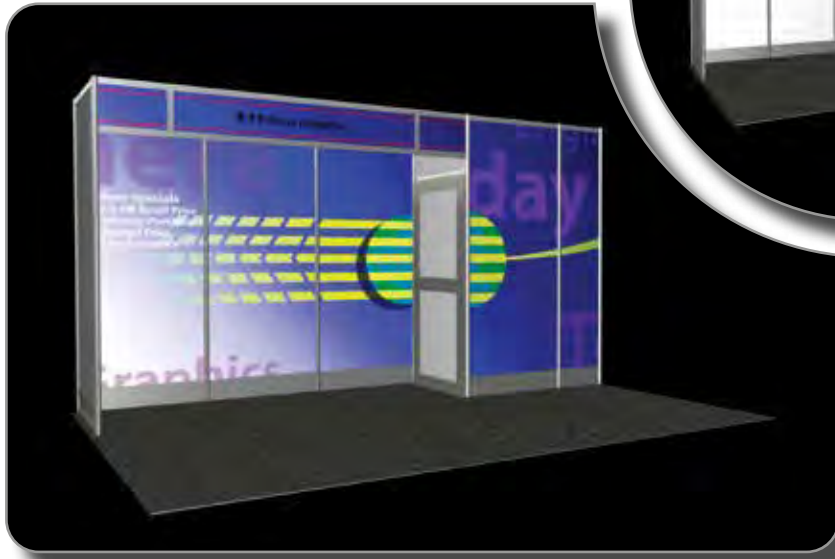
- Labor to Install & Dismantle
- (5) Stem Lights
- Available Colors: Black, Grey, White, Blue

Carpet and power for stem lights not included. Please see Flooring Options & Electrical order forms for rates

15' Exhibit Options - 8'H



D150D 15' Storage Room Designer *Includes Custom Graphics



D150B 15' Storage Room Basic

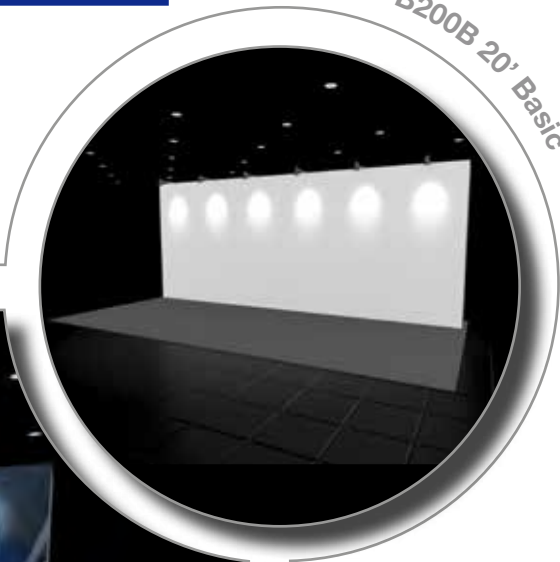
Rental Includes:

- Labor to Install & Dismantle
- (3) Stem Lights
- Storage Room
- Available Colors: Black, Grey, White, Blue

Carpet and power for stem lights not included. Please see Flooring Options & Electrical order forms for rates

Refer to page 8 & 9 for various counters, shelves, and other accessories.

B200D 20' Designer *Includes Custom Graphics



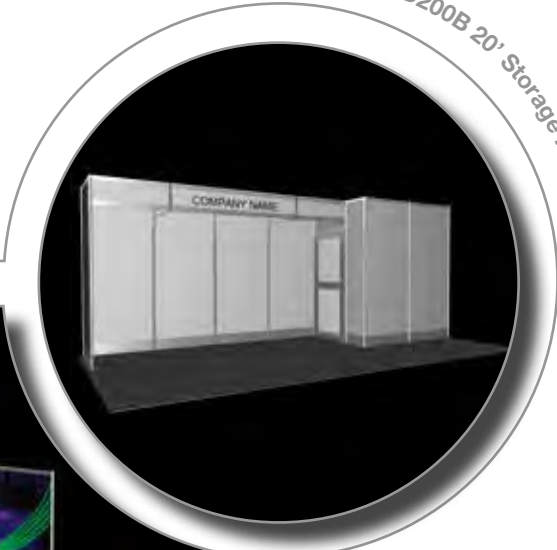
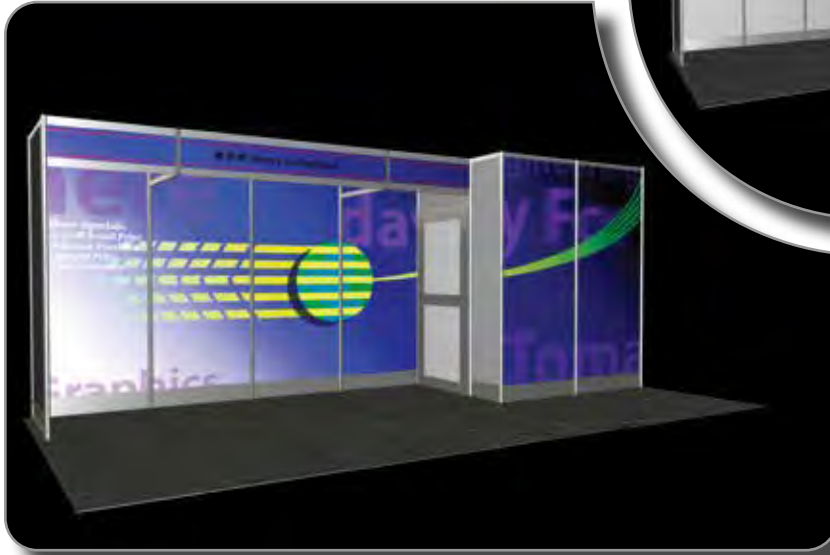
Rental Includes:

- Labor to Install & Dismantle
- (6) Stem Lights
- Available Colors: Black, Grey, White, Blue

Carpet and power for stem lights not included. Please see Flooring Options & Electrical order forms for rates

Refer to page 8 & 9 for various counters, shelves, and other accessories.

D200D Storage Room Designer *Includes Custom Graphics



D200B 20' Storage Room Basic

Rental Includes:

- Labor to Install & Dismantle
- (4) Stem Lights
- Storage Room
- Available Colors: Black, Grey, White, Blue

Carpet and power for stem lights not included. Please see Flooring Options & Electrical order forms for rates

Refer to page 8 & 9 for various counters, shelves, and other accessories.

A200D 20' Designer with Header *Includes Custom Graphics



A200B 20' Basic with Header

Rental Includes:

- Labor to Install & Dismantle
- (6) Stem Lights
- (2) Counters with storage
- Available Colors: Black, Grey, White, Blue

Carpet and power for stem lights not included. Please see Flooring Options & Electrical order forms for rates

C100D 10'x12'H Designer with Header

*Includes Custom Graphics



C100B 10' x 12'H Basic with Header

Refer to page 8 & 9 for various counters, shelves, and other accessories.

C150D 15' x 12'H Designer with Header

*Includes Custom Graphics



C150B 15' x 12'H Basic with Header

Rental Includes:

- Labor to Install & Dismantle
- (4) Stem Lights
- Available Colors: Black, Grey, White, Blue

Carpet and power for stem lights not included. Please see Flooring Options & Electrical order forms for rates

20' Exhibit Options - 12'H

C200D 20' x 12'H Designer

*Includes Custom Graphics



Rental Includes:

- Labor to Install & Dismantle
- (6) Stem Lights
- Available Colors: Black, Grey, White, Blue

Carpet and power for stem lights not included. Please see Flooring Options & Electrical order forms for rates

Refer to page 8 & 9 for various counters, shelves, and other accessories.

Exhibit Accessories



ACC11
Stem Light



ACC33, 34, 35
12" Deep Straight Laminate Shelf
Size: 39" wide x 12" deep
Available Colors: White, Black and Clear



ACC13, 14, 15
8" Deep Straight Laminate Shelf
Size: 39" wide x 8" deep
Available Colors: White, Black and Clear

Counter Options

All counters can be ordered to match the color of your exhibit panel colors.
Custom Graphics can be added at an additional cost. Please refer to the Counter Options order form.



ACC1
Curved Reception Counter
with Open Back
Size: 60 ½" wide x 20" deep x 42" high
Open back - no shelf or door.

ACC9
Reception Counter with Open Back
Size : 78" wide x 20" deep x 42" high
Open back - no shelf or door.



ACC2
Essential Credenza
Size: 40" wide x 30" deep x 42" high
Comes with lockable door and a shelf.

ACC10
Essential Extended Credenza
Size : 78" wide x 20" deep x 42" high
Comes with lockable door and
a shelf.



ACC8
Essential Pedestal
Size: 30" wide x 30" deep x 42" high
Pedestal only - closed back.



November 3-6, 2024
Chicago, Illinois USA

Exhibit
Solutions

Discount Deadline:
September 16, 2024

- Exhibit rental price includes labor to install, dismantle, shipping and stem lights. Furniture, carpet, cleaning, electrical outlets and electrical labor and materials are NOT included.
- Advance pricing for orders with custom graphics will apply only if production ready artwork files are received and approved prior to the Discount Deadline date. Production ready artwork files submitted or graphic proofs approved after the Discount Deadline date will be billed at Standard rates.
- If graphic design or layout is required, a set up fee of \$130.00 will apply.
- Rental Exhibit Orders and production ready artwork files MUST be received and graphic proofs must be approved at least 2-weeks prior to the first move-in date for the show. Orders submitted after this date cannot be guaranteed.
- A 50% cancellation fee will apply after the Discount Deadline date. A 100% cancellation fee will apply on or after 10 business days prior to move-in.

8 FT HIGH EXHIBIT OPTIONS

Item Code	Item	Advance Price	Standard Price
	*Please note: Custom header available		
A100B	10' x 10' Basic w/ Header*	\$ 2,210.30	\$ 3,157.60
A100D	10' x 10' Designer w/ Header	\$ 4,017.60	\$ 5,739.45
B100B	10' x 10' Basic	\$ 2,655.85	\$ 3,794.10
B100D	10' x 10' Designer	\$ 4,822.40	\$ 6,889.15
D100B	10' x 10' Storage Room Basic*	\$ 2,869.85	\$ 4,099.80
D100D	10' x 10' Storage Room Designer*	\$ 5,227.55	\$ 7,467.95
A150B	15' x 10' Basic w/ Header*	\$ 3,093.75	\$ 4,419.65
A150D	15' x 10' Designer w/ Header	\$ 5,625.05	\$ 8,035.80
B150B	15' x 10' Basic	\$ 3,717.30	\$ 5,310.45
B150D	15' x 10' Designer	\$ 6,750.90	\$ 9,644.15
D150B	15' x 10' Storage Room Basic*	\$ 4,420.55	\$ 6,315.10
D150D	15' x 10' Storage Room Designer	\$ 8,019.85	\$11,456.95
B200B	10' x 20' Basic	\$ 5,305.10	\$ 7,578.75
B200D	10' x 20' Designer	\$ 9,644.80	\$13,778.30
D200B	10' x 20' Storage Room Basic*	\$ 5,305.10	\$ 7,578.75
D200D	10' x 20' Storage Room Designer	\$ 9,644.80	\$13,778.30
A200B	10' x 20' Basic w/ Header*	\$ 5,305.10	\$ 7,578.75
A200D	10' x 20' Designer w/ Header	\$ 9,644.80	\$13,778.30
Custom Headers	*Custom Header - 8'H x 10' booth	\$ 257.75	\$ 368.25
	*Custom Header - 8'H x 15' booth	\$ 386.60	\$ 552.30
	*Custom Header - 8'H x 20' booth	\$ 515.45	\$ 736.40

12 FT HIGH EXHIBIT OPTIONS

C100B	10'W x 12'H Basic w/ Header*	\$ 3,093.75	\$ 4,419.65
C100D	10'W x 12''H Designer w/ Header	\$ 5,625.05	\$ 8,035.80
C150B	15'W x 12'H Basic w/ Header*	\$ 4,331.00	\$ 6,187.15
C150D	15'W x 12'H Designer w/ Header	\$ 7,874.60	\$11,249.45
C200B	20'W x 12'H Basic w/ Header*	\$ 6,188.55	\$ 8,840.80
C200D	20'W x 12'H Designer w/ Header	\$11,250.05	\$16,071.50
Custom Headers	*Custom Header - 12'H x 10' booth	\$ 370.20	\$ 528.90
	*Custom Header - 12''H x 15' booth	\$ 555.30	\$ 793.30
	*Custom Header - 12'H x 20' booth	\$ 740.40	\$ 1,057.75

Login to Exhibitor Resource Center to order
(All orders must be submitted online - PDF forms will not be accepted)



November 3-6, 2024
Chicago, Illinois USA

Exhibit
Accessories

Discount Deadline:
September 16, 2024

ACCESSORIES - LIGHTING AND SHELVES

Structure Code	Item	Advance Price	Standard Price
ACC11	Additional Stem Light	\$ 87.40	\$ 124.90
ACC13,14,15	8" Deep Straight Laminate Shelf	\$ 83.00	\$ 118.60
ACC33,34,35	12" Deep Straight Laminate Shelf	\$ 93.95	\$ 134.25

Select shelf color online when ordering: White, Black, Clear

COUNTERS

Structure Code	Item	Advance Price	Standard Price
ACC1	Curved Reception w/ Open Back	\$ 662.90	\$ 947.00
ACC2	Essential Credenza	\$ 469.60	\$ 670.90
ACC8	Essential Pedestal	\$ 469.60	\$ 670.90
ACC9	Reception Counter w/ Open Back	\$ 662.90	\$ 947.00
ACC10	Essential Extended Credenza w/ Shelf	\$ 718.60	\$1,026.60
	Custom Graphics for Front Panel of Counter (per panel)	\$ 262.10	\$ 374.45

COUNTER DETAILS

FOR COUNTERS:

Hard wall panel colors available (Please select color when ordering online) Black, Gray, White, Blue

BOOTH DETAILS AND HEADER OPTIONS

FOR BASIC EXHIBITS AND NON-GRAPHIC PANELS ON DESIGNER UNITS:

- Hard wall panel colors available are black, gray, white and blue and can be ordered online.
*Pegboard, Slat Wall and Grid Wall are also available. Contact your Customer Service Manager.)

Font options are **Times New Roman Bold, Castle T Bold, Arial Black, Cooper Black**

Text color options are black, red, or blue.

Login to Exhibitor Resource Center to order
(All orders must be submitted online - PDF forms will not be accepted)



Change your Perspective™

The way you look at rental exhibits is about to change forever.

The Perspective™ Series line of exhibit rentals for PACK EXPO Services offers you unmatched quality, price and flexibility to effectively and affordably meet your exhibit goals.

An exhibit rental can be a great choice if you are a new exhibitor, exhibit only occasionally, or change your look often.

No longer are you boxed into the same configuration. Powered by the beMatrix system, these exhibit options have the look and design of a custom-build exhibit, while having the modularity and possibilities of a system.

The underlying structure is hardly visible, leaving more space for graphics and giving you a near seamless design. Imagine: the polished look of custom for the price of a rental.

Enable close-up networking around fresh looking counters or launch your product demo to new heights with a sleek configuration.

Units include backwall with custom graphics printing, along with counters and shelves as shown. Call your Customer Service Manager to discuss adding carpet, cleaning, furniture, electrical and AV services.

It's time to change your rental exhibit Perspective™
For additional information please contact pes.service@packexposervices.com.



CONFER | 6645



CONFER | 14830



DIALOGUE | 7000



DIALOGUE | 14000



EXCHANGE | 7110



EXCHANGE | 13000

10 x 10

10 x 20



FASHION | 6900



FASHION | 13600



FREEFORM | 7200



FREEFORM | 14400



FREEFORM W/ SLATWALL | 7000



FREEFORM W/ SLATWALL | 14000

10 x 10

10 x 20

Change your Perspective™



HUDDLE | 6010



HUDDLE | 11825



LAUNCH | 6900



LAUNCH | 16300



LOUNGE | 5500



LOUNGE | 11000

10 x 10

10 x 20



SESSION | 7110



SESSION | 14445



SHOWCASE | 7900



SHOWCASE | 15800



SHOWCASE W/ CLOSET | 7500



SHOWCASE W/ CLOSET | 15000

10 x 10

10 x 20



SHOWCASE W/ CLOSET & SLATWALL | 7250



SHOWCASE W/ CLOSET & SLATWALL | 14500



TOUR | 7600



TOUR | 15495

10 x 10

10 x 20



November 3-6, 2024
Chicago, Illinois USA

Perspective Line Exhibits

Discount Deadline:
September 16, 2024

- Furniture, carpet, cleaning, electrical outlets and electrical labor and materials are NOT included for Perspective Line Exhibits.
- Advance pricing for orders with graphics will apply if print ready files are received and approved prior to the Discount Deadline date. All files approved after the Discount Deadline date will be charged Standard rates.
- A Digital Setup Fee of \$130 will be charged for all Perspective Line Exhibits.
- Orders and graphics MUST be received and approved at least 2-weeks prior to show move-in. Orders after this date cannot be guaranteed.
- A 50% cancellation fee will apply after the Discount Deadline date. A 100% cancellation fee will apply on or after 10 business days prior to move-in. Please refer to show Terms and Conditions for additional information.

10' EXHIBIT PACKAGES

Item	Item	Advance Price	Standard Price
6645 Confer Exhibit	8' H x 10' W	\$ 6,645.00	\$ 9,492.90
7000 Dialogue Exhibit	8' H X 10' W	\$ 7,000.00	\$10,000.00
7110 Exchange Exhibit	8' H x 10' W	\$ 7,110.00	\$10,157.15
6900 Fashion Exhibit	8' H x 10' W	\$ 6,900.00	\$ 9,857.15
7200 Freeform Exhibit	8' H x 10' W	\$ 7,200.00	\$10,285.75
7000 Freeform w/Slatwall	8' H x 10' W	\$ 7,000.00	\$10,000.00
6010 Huddle Exhibit	8' H x 10' W	\$ 6,010.00	\$ 8,585.75
6900 Launch Exhibit	8' H x 10' W	\$ 6,900.00	\$ 9,857.15
5500 Lounge Exhibit	8' H x 10" W	\$ 5,500.00	\$ 7,857.15
7110 Session Exhibit	8' H x 10' W	\$ 7,110.00	\$10,157.15
7900 Showcase Exhibit	8' H x 10' W	\$ 7,900.00	\$11,285.75
7500 Showcase w/Closet	8' H x 10' W	\$ 7,500.00	\$10,714.30
7250 Showcase w/ Closet & Slatwall	8' H x 10' W	\$ 7,250.00	\$10,357.15
7600 Tour Exhibit	8' H x 10' W	\$ 7,600.00	\$10,857.15

20' EXHIBIT PACKAGES

14830 Confer Exhibit	8' H x 20' W	\$14,830.00	\$21,185.75
14000 Dialogue Exhibit	8' H x 20' W	\$14,000.00	\$20,000.00
13000 Exchange Exhibit	8' H x 20' W	\$13,000.00	\$18,571.45
13600 Fashion Exhibit	8' H x 20' W	\$13,600.00	\$19,428.60
14400 Freeform Exhibit	8' H x 20' W	\$14,400.00	\$20,571.45
14000 Freeform w/Statwall	8' H x 20' W	\$14,000.00	\$20,000.00
11825 Huddle Exhibit	8' H x 20' W	\$11,825.00	\$16,892.90
16300 Launch Exhibit	8' H x 20' W	\$16,300.00	\$23,285.75
11000 Lounge Exhibit	8' H x 20" W	\$11,000.00	\$15,714.30
14445 Session Exhibit	8' H x 20' W	\$14,445.00	\$20,635.75
15800 Showcase Exhibit	8' H x 20' W	\$15,000.00	\$21,428.60
15000 Show case w/Closet	8' H x 20' W	\$15,800.00	\$22,571.45
14500 Showcase w/closet & Slatwall	8' H x 20' W	\$14,500.00	\$20,714.30
15495 Tour Exhibit	8' H x 20' W	\$15,495.00	\$22,135.75

ACCESSORIES

Mounting Support for Monitor		\$ 100.00	\$ 142.90
ACC13,14,15 - Shelves	8" Deep Straight Laminate Shelf	\$ 83.00	\$ 118.60
ACC33,34,35 - Shelves	12" Deep Straight Laminate Shelf	\$ 93.95	\$ 134.25

Login to Exhibitor Resource Center to order
(All orders must be submitted online - PDF forms will not be accepted)

Portable Solutions

Simple, yet impactful designs created and built just for you. Yours to own after the show, making them a terrific value. All options are:

- Big Branding. Lots of creative space to show off your marketing message.
- Easy to set up and dismantle. Do it yourself, or hire labor to assist you.
- Lightweight. Saves money in shipping and material handling.
- Durable. Use them show after show and great for internal events too.
- Good Value. Well priced investment.

Exhibit Backwalls



Light Boxes and Towers



Counters



Banner Stands



Hanging Signs



Accessories



Exhibit Backwall

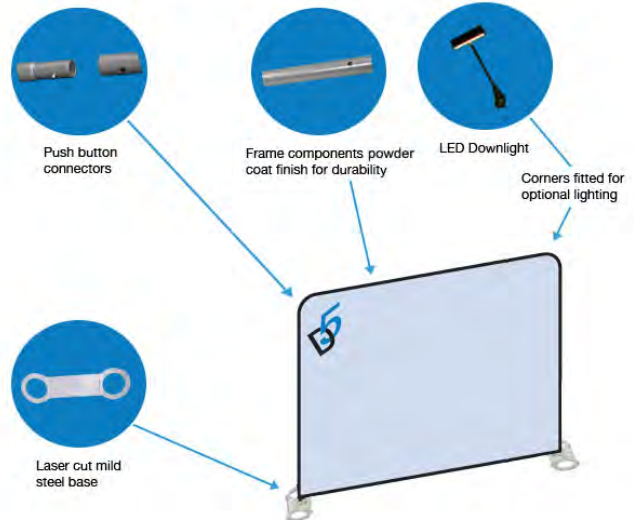
D5 Milan FlatWall



D5 MILAN FLATWALL (CMIL-00-002)

Seamless photorealistic fabric graphic wall on a lightweight aluminum frame with push button fit connections. Graphic is pillow case fit with a zipper closure along the bottom. Assembly time approx 8 minutes. Travel bag included. Lighting options available.

Dimensions: 115" w x 88" h
Weight: 29 lbs
Packed size: 13" w x 13" d x 33" l



D5 Milan Curve



CURVED BACKWALL (CMIL-00-005)

Seamless curved fabric graphic wall fitted on a lightweight aluminum frame with push button fit connections. Graphic is pillow case fit with a zipper closure along the bottom. Assembly time approx 8 minutes. Travel bag included. Lighting options available.

Dimensions: 114" w x 88" h
Weight: 29 lbs
Packed size: 13" w x 13" d x 33" l



Exhibit Backwall

8ft Flat Fabric Mural with End Caps



8FT FLAT FABRIC MURAL (FAM-00-009)

This portable billboard makes a big impression, with the end caps giving 3D depth. The high resolution fabric graphic velcro mounts to the frame and can be left attached for shipping at the end of the show. Assembly time approx 5 minutes. Travel bag included. Shipping case & lighting options available.

Dimensions: 88.5" w x 88.5" h
Weight: 30lbs
Packed size: 13" w x 13" d x 33" l



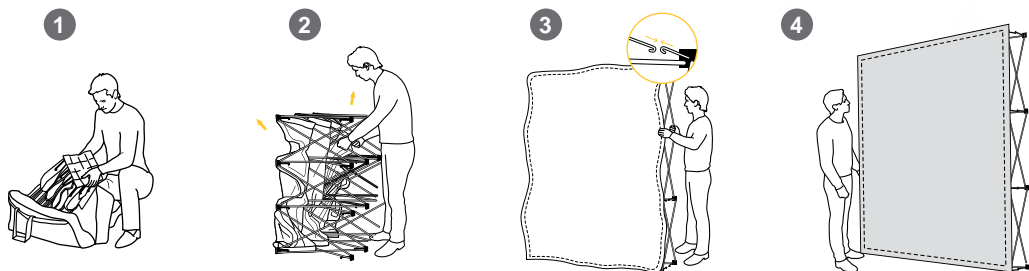
10ft Flat Fabric Mural with End Caps



10FT FLAT FABRIC MURAL (FAM-00-010)

For an even bigger impact this display provides over 86 sq ft of image. The high resolution fabric graphic velcro mounts to the frame and can be left attached for shipping at the end of the show. Assembly time approx 5 minutes. Travel bag included. Shipping case & lighting options available.

Dimensions: 117" w x 88.5" h
Weight: 35lbs
Packed size: 13" w x 19" d x 33" l



Light Boxes

10ft Light Box with frame
(Single or Double Sided)



* Light Box uses
LED bright
lighting

10FT LIGHT BOX

Single Sided - (10 WRF 100)

Double Sided - (10 BL 115)

Our 10 foot wide LED lightboxes incorporate the latest trend in signage synonymous with deluxe brands and services. High-impact colors, sleek modular design and full custom capability empowers you to transform your design concepts into real life visual experiences. Internal LED Lighting maximizes visual impact of the graphic.

Dimensions: 116" w x 94" h

Light Towers

Back lit tower and frame
(Single or Double Sided)



* Light Tower
uses LED bright
lighting

BACK LIT TOWER

Single Sided - (7 WRF 100)

Double Sided - (7 BL 115)

Add an LED Lightbox Tower to your exhibit. The simple groove channel is great for retrofitting fabric graphics (either single or double sided) right on the tower framing. Simple change out graphics for future use. Perfect for those just needing a little extra boost to complete an exhibit area or define a space or message.

Dimensions: 30" w x 84" h

Counters

Curved Podium

CURVED PODIUM (CMIP-00-001)

Lightweight aluminum frame with a wrapped seamless full color graphic. Frame, graphic, counter top and travel bag included. Cable management for ipads, monitors ect. is optional.

Load Bearing Capacity: 200 lbs
Dimensions: 30" w x 39" h x 15" d
Weight: 15 lbs
Packed size: 13" w x 19" d x 33" l



Fabric wrap simply connects with rear zippers providing easy access for storage.

Counters

Case to Counter Conversion



CASE TO COUNTER CONVERSION (BCS-05-004)

Our oval rotomoulded shipping case with wheels provides secure shipping for your lighting accessories D5 Milan or Fabric Mural display and can become a counter with a full fabric graphic wrap that simply slips over the case and has a laminated wood counter top insert.

Load Bearing Capacity: 100 lbs
Dimensions: 22" w x 37.5" h x 12" d
Weight: 18 lbs
Packed size: 24" w x 16" d x 38" l



Banner Stands

Single Sided Pull Up Banner

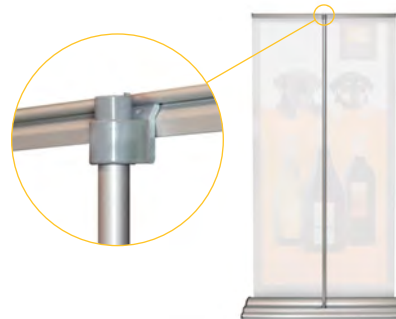


PULL UP BANNER (BSI-00-002)

The sleek polished aluminum base unit provides all the stability for this stylish display. They can be used in pairs and threes to create back walls. The full color Poly Satin fabric graphic is included.

Simple to set up with a 3 part connected pole, the display comes complete with a durable padded travel bag that has a shoulder strap for carrying.

Dimensions: 33.5" w x 86" h
Packed Weight: 13 lbs
Packed size 9" w x 4" d x 36" l



Hook up to the top profile easily by inserting the end of the pole to the slot of the profile.

Banner Stands

Quick Stand

QUICK STAND (BSQ-00-001)

The QuickStand is a non-retractable banner stand designed with simplicity and portability in mind. It travels well, making it perfect for all levels of marketing. Graphics are easily changed making this a great lightweight banner impact.

Dimensions: 35" w x 88" h

- ▶ Velcro graphics make it easy to exchange on the fly
- ▶ Simple to install
- ▶ Lightweight
- ▶ Telescopic pole to accommodate various heights



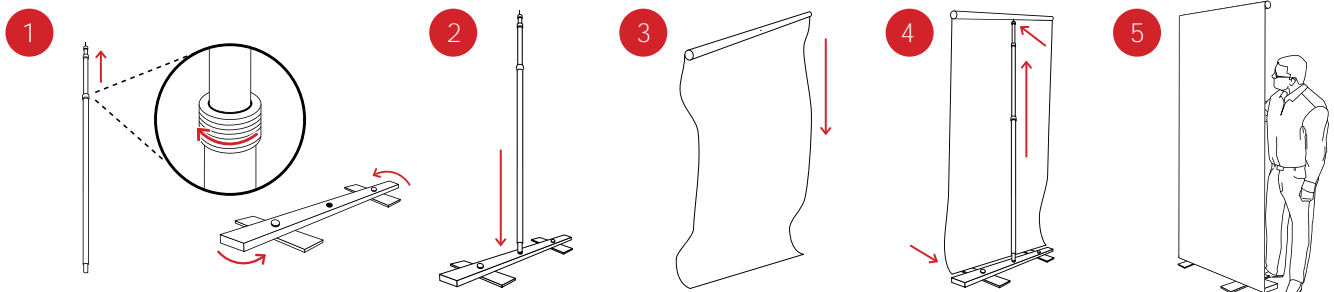
TRAVEL CASE



TOP BAR



BASE



Hanging Signs

Aluminum frame structure with push fit connection top and bottom frames and simple allen key screws for the uprights. All components are powder coated for durability and to prevent marking of the graphic. The seamless full color fabric graphic can be printed one or both sides and have an integral internal light blocker to prevent any shadowing effects from overhead lighting. Every kit includes the frame, graphic, harness kit and travel bag. Assembly time 15 minutes.

Circular Hanging Sign



CIRCULAR HANGING SIGN DIMENSIONS:

Circular Frame 96" w x 42" h CHHA-00-005, 006	Hanging weight 38lbs
Circular Frame 120" w x 42" h CHHA-00-013, 014	Hanging weight 45lbs
Circular Frame 144" w x 42" h CHHA-00-019, 020	Hanging weight 53lbs

Square Hanging Sign



SQUARE HANGING SIGN DIMENSIONS:

Square Frame 96" w x 96" d x 42" h CHSQ-00-003, 004	Hanging weight 49lbs
Square Frame 120" w x 120" d x 42" h CHSQ-00-005, 006	Hanging weight 58lbs
Square Frame 144" w x 144" d x 42" h CHSQ-00-007, 008	Hanging weight 71lbs

Accessories

LED Milan Light

LED MILAN LIGHT (ELI-05-001) SILVER
(ELI-05-002) BLACK



- ▶ 150W equivalent
- ▶ Cool to the touch
- ▶ Compliant with many show rules
- ▶ On/Off switch
- ▶ Fits wide variety of systems
- ▶ Available in black or silver



November 3-6, 2024
Chicago, Illinois USA

Portable Solutions
FOR PURCHASE

Discount Deadline:
September 16, 2024

- PACK EXPO Services Portable Solutions offers exhibitors a quick and cost-effective solution to showcase your booth for trade show participation. Please note items listed below are available for purchase, not rental.
- Installation and Dismantle labor is not included. If labor is required, please login to the Exhibitor Resource Center to order online.
- Electrical service is not included. To order electrical service, please login to the Exhibitor Resource Center to order online.
- Advance pricing for orders with custom graphics will apply only if production ready artwork files are received and approved prior to the Discount Deadline date. Production ready artwork files submitted or graphic proofs approved after the Discount Deadline date will be billed at Standard rates.
- Portable Solutions orders and production ready artwork files MUST be received and graphic proofs must be approved at least 2-weeks prior to show first move-in date. Orders submitted after this date cannot be guaranteed.
- Once graphics are submitted, all sales are final and no refunds will be given thereafter. A 50% penalty is charged for cancellations after the Discount Deadline date and prior to 10-days prior to first day of exhibitor move-in if graphics have not been printed. No refunds will be made thereafter.
- Login to Exhibitor Resource Center to upload your Graphic files.

EXHIBIT BACKWALLS

All backwalls include the frame, fabric graphic, and travel bag.

Structure Code	Item	Advance Price	Standard Price
CMIL-00-002	10 ft. D5 Milan FlatWall	\$3,683.75	\$5,525.50
CMIL-00-005	10 ft. D5 Milan Curve	\$3,901.25	\$5,851.50
FAM-00-009	8 ft. Flat Fabric Mural w/ End Caps	\$2,499.00	\$3,748.50
FAM-00-010	10 ft. Flat Fabric Mural w/ End Caps	\$3,145.50	\$4,718.50

LIGHT BOXES/TOWERS

All light boxes come with frame, fabric graphic, and rotomolded wheeled case.

10WRF100	10 ft. Single Sided Litex Frame 116" x 94"*	\$6,707.75	\$10,061.50
10BL115	10 ft. Double Sided Litex Frame 116" x 94"	\$7,642.50	\$11,464.00
7WRF100	Single Sided Backlit Tower 30"w x 84"h	\$3,057.50	\$4,586.00
7BL115	Double Sided Backlit Tower 30"w x 84"h	\$3,971.75	\$5,957.50

COUNTERS

All counters include the frame, fabric graphic, and travel bag.

CMIP-00-001	Curved Podium	\$1,554.00	\$2,330.75
PAC-00-002)	PALI Counter	\$2,008.50	\$3,013.00
BCS-05-004	Case to Counter (Full Oval Case and Counter Top)	\$ 485.50	\$ 728.25
BCS-02-004	Case to Counter Conversion (Full Oval Graphic Wrap Only)	\$ 422.25	\$ 633.00

BANNER STANDS

All backwalls include the frame, fabric graphic, and travel bag.

BSI-00-002	Single Sided Pull Up Banner	\$ 617.00	\$ 925.25
BTW-00-018	Single Sided Quickstand Banner (Non-Retractable)	\$ 717.75	\$1,076.50

Login to Exhibitor Resource Center to order
(All orders must be submitted online - PDF forms will not be accepted)



November 3-6, 2024
Chicago, Illinois USA

Portable Solutions
FOR PURCHASE

Discount Deadline:
September 16, 2024

HANGING SIGNS

All Signs include the frame, fabric graphic, harness kit, and traveling bag.

Structure Code	Item	Advance	Standard
CHHA-00-005	8' Single Sided Circular Hanging Sign	\$5,110.50	\$ 7,665.75
CHHA-00-006	8' Double Sided Circular Hanging Sign	\$5,777.50	\$ 8,666.25
CHHA-00-013	10' Single Sided Circular Hanging Sign	\$6,085.50	\$ 9,128.25
CHHA-00-014	10' Double Sided Circular Hanging Sign	\$6,919.25	\$10,379.00
CHHA-00-019	12' Single Sided Circular Hanging Sign	\$7,316.00	\$10,974.00
CHHA-00-020	12' Double Sided Circular Hanging Sign	\$8,316.50	\$12,474.75
CHSQ-00-003	8' Single Sided Square Hanging Sign	\$6,234.75	\$ 9,352.25
CHSQ-00-004	8' Double Sided Square Hanging Sign	\$7,083.50	\$10,625.25
CHSQ-00-005	10' Single Sided Square Hanging Sign	\$7,480.25	\$11,220.00
CHSQ-00-006	10' Double Sided Square Hanging Sign	\$8,541.00	\$12,811.50
CHSQ-00-007	12' Single Sided Square Hanging Sign	\$8,726.00	\$13,089.00
CHSQ-00-008	12' Double Sided Square Hanging Sign	\$9,761.50	\$14,642.25

ACCESSORIES

ELI-05-002	LED Light 150W Equivalent Spotlight (Black)	\$ 240.50	\$ 360.75
------------	---	-----------	-----------

Login to Exhibitor Resource Center to order
(All orders must be submitted online - PDF forms will not be accepted)



Flooring solutions

Stand out in style.





Your exhibit's flooring should complement your brand

- The largest selection of exhibit flooring in the industry with a wide choice of colors and sizes
- New vinyl and turf solutions added to broaden your options and freshen your space
- Colorfast carpeting boasts a consistent shade every time
- All carpet and padding is manufactured with 100% recycled material
- Rental prices include delivery, installation, carpet removal and material handling fees

Most popular flooring options

Pack Expo Services offers the widest selection of flooring options, ensuring you can take your booth to the next level. Choose from varying carpet weights to fit your level of comfort and durability or stand out with vinyl and turf. Continue reading for more detail on each flooring option.

Be sure to order before the discount deadline!

Ordering early gives you access to a wider selection of products at discounted prices, saving you time and money so you can rest at ease.

🚩 = Available only before the discount deadline

Classic Collection

16oz carpet



Custom Cut Classic Collection

16oz carpet



Designer Plus Collection NEW

30oz carpet



Supreme Collection NEW

45oz carpet



Expo Flex Collection NEW

10ft vinyl



Event Flex Collection NEW

12ft vinyl



Riviera + Parkside Collections NEW

Turf



Classic Collection

16oz

- Best value and best seller
- Available in 10ft width and in the most common exhibit spaces including 10x10, 10x20, and 10x30
- 100% recyclable
- For extra comfort, add padding for an additional fee



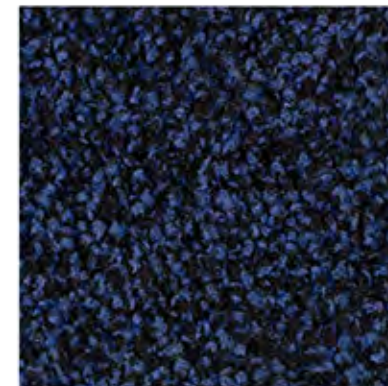
Gray



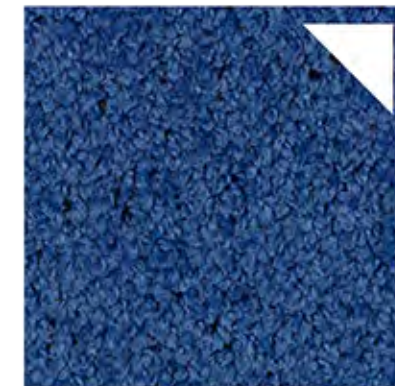
Tuxedo



Black



Midnight



Blue



Red

🔽 = Available only before the discount deadline

Custom Cut Classic Collection

16oz

- 10ft width and custom cut to size
- Priced per sq.ft., minimum of 100 sq.ft.
- 100% recyclable
- Exhibit spaces are protected with Visqueen plastic floor covering
- For extra comfort, add padding for an additional fee



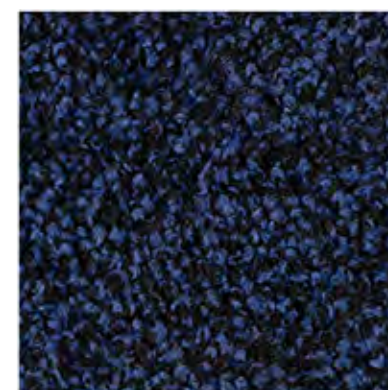
Gray



Tuxedo



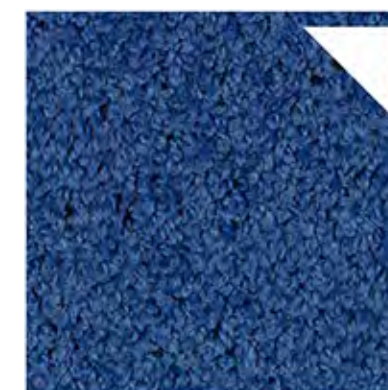
Black



Midnight



Red



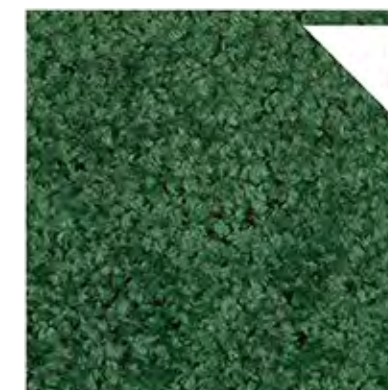
Blue



Latte

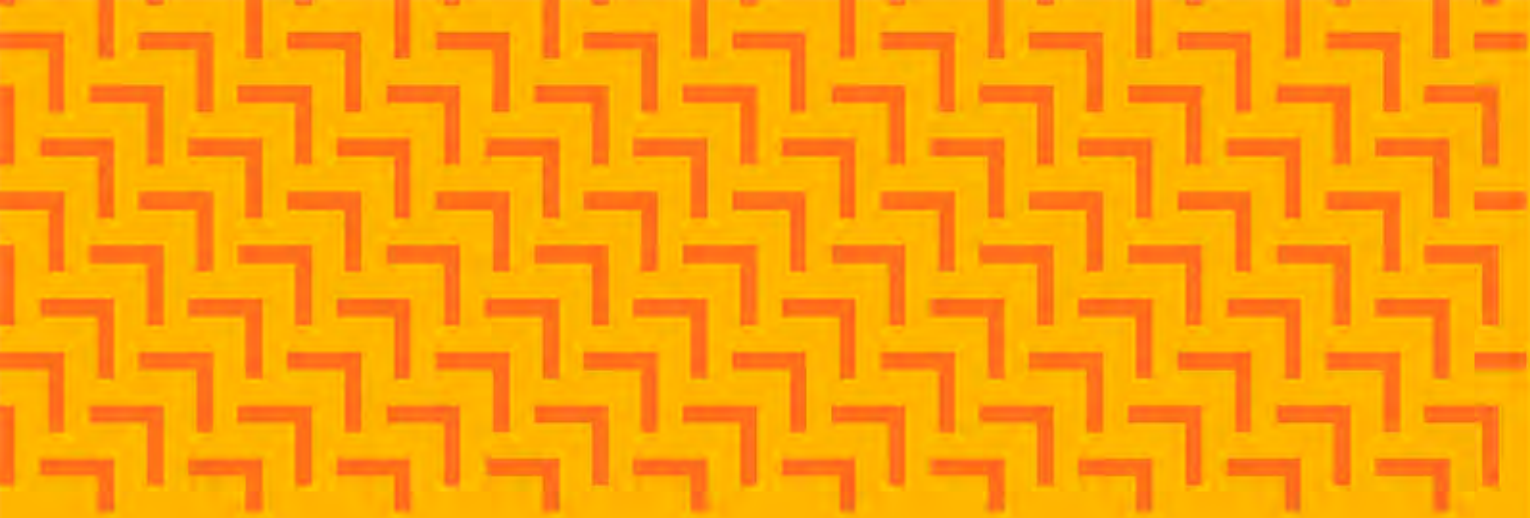


Red Pepper



Green

▼ = Available only before the discount deadline



NEW

Designer Plus Collection

30oz

- Step up the comfort and durability with the Designer plus carpet
- 10ft width designed and cut to size
- Priced per sq.ft., minimum of 100 sq.ft.
- 100% recyclable
- Exhibit spaces are protected with Visqueen plastic floor covering
- For extra comfort, add padding for an additional fee



Black



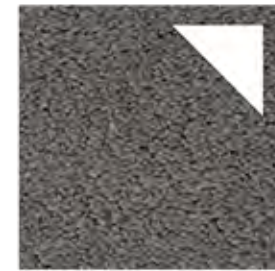
Grey Pearl



Red



Navy



Lava Rock



Paprika



Graphite



Royal Blue



Silky Beige



Ivory



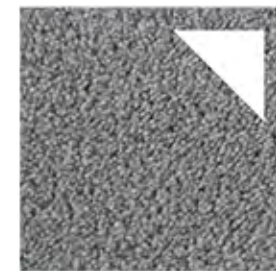
Smoke




Sword



White



Silver Cloud

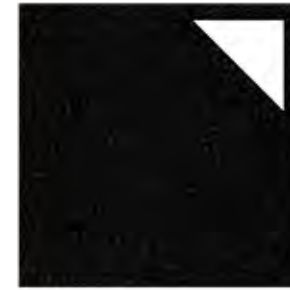
 = Available only before the discount deadline

NEW

Supreme Collection

45oz

- The most plush flooring option with added durability
- 10ft width designed and cut to size
- Priced per sq.ft., minimum of 100 sq.ft.
- 100% recyclable
- Exhibit spaces are protected with Visqueen plastic floor covering
- For extra comfort, add padding for an additional fee



Black



Red



Silver Cloud



Navy



Charcoal



Reflex Blue



Cream



Silver Mist



Smoke

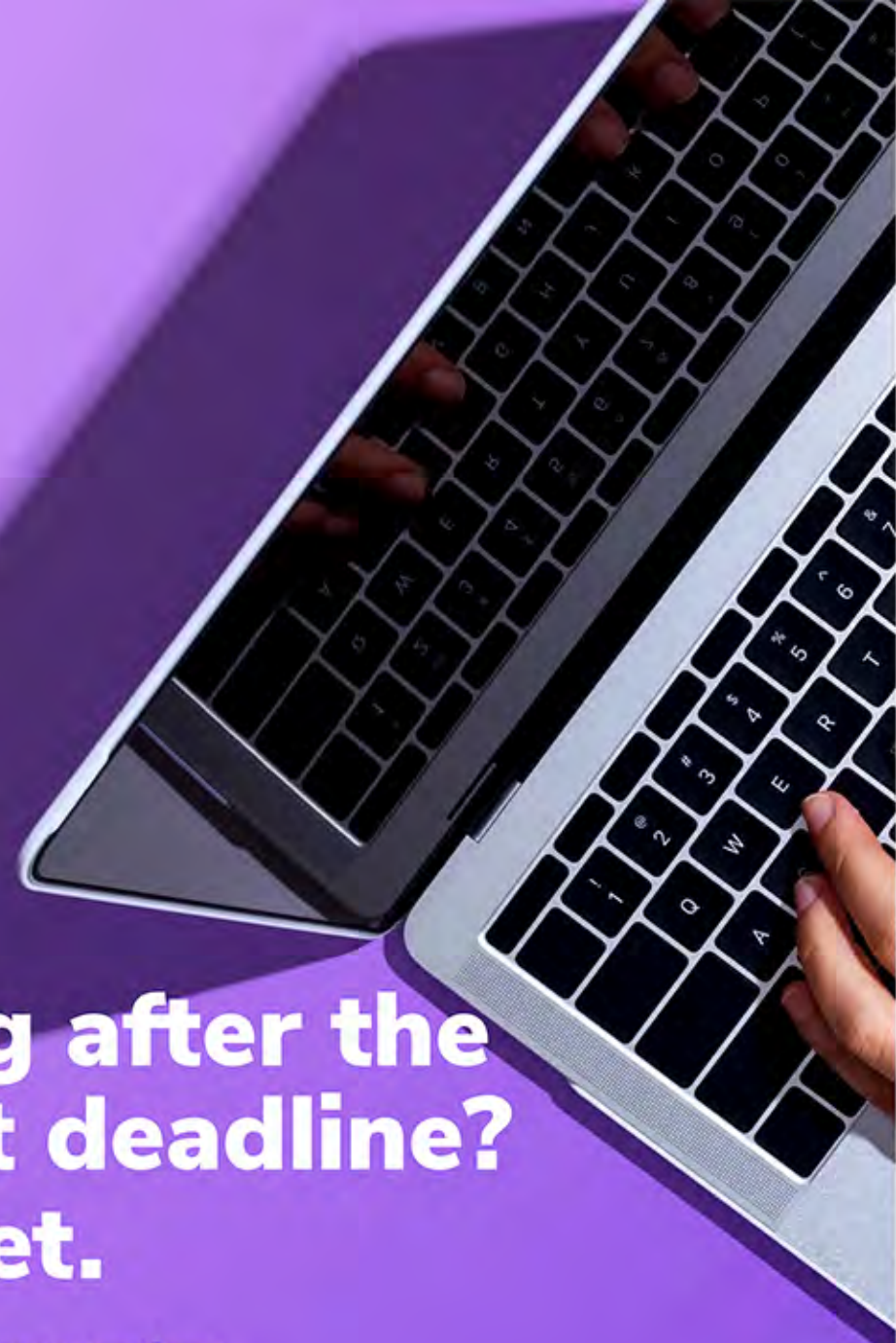


White

↙ = Available only before the discount deadline

Ordering after the discount deadline? Don't fret.

You can select from these options.



Classic Collection

16oz



Gray

Tuxedo

Black

Midnight

Custom Cut Classic Collection

16oz



Gray

Tuxedo

Black

Midnight

Red

Designer Plus Collection

30oz



Black

Gray Pearl



Want to try something other than carpet? We have it!

Now offering vinyl and turf flooring solutions.

NEW

Expo Vinyl Collection

- Get the upgraded appearance of wood or tile
- Standard 10ft width and can be custom cut to size
- Great for exhibit spaces in common sizes of 10x10, 10x20 and 10x30
- Priced per sq.ft., minimum of 100 sq.ft.
- For extra comfort, add padding for an additional fee



Birch



Light Maple



Dark Maple



Ash



Smoke

🚩 = Available only before the discount deadline

NEW

Event Flex Collection

- Get the look of classic wood, tile, or laminate – with easier installation
- 12ft width designed and cut to size
- Great for island exhibit spaces or aisle flooring designs
- Priced per sq.ft., minimum of 100 sq.ft.
- For extra comfort, add padding for an additional fee



Whitewood



Silverwood



Dark Maple



Blackwood



Barnwood

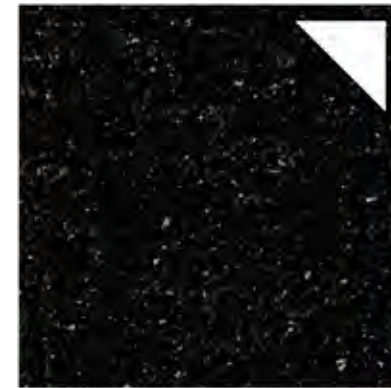
🚩 = Available only before the discount deadline

NEW

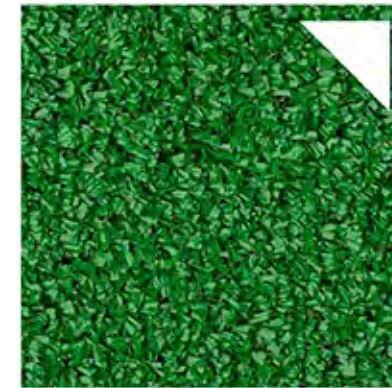
Turf

- Bring the outdoors to you with these synthetic grass flooring solutions
- Available in many shades of green and durable for both indoor and outdoor use
- Standard 12ft width and can be custom cut to size
- Priced per sq.ft., minimum of 100 sq.ft.

Riviera synthetic grass brings an outdoor feel to your event space. Optimized for durability and resistance that is ideal for indoor or outdoor use.



Riviera Black



Riviera Green

Parkside Parkside high-quality synthetic grass provides the real look and feel of your backyard. Colorfast and UV technology makes this the most durable turf solution for both indoor and outdoor use.



Parkside Green

📌 = Available only before the discount deadline

Want to take your flooring to the next level?

Custom flooring options can be ordered for borders, patterns, logos and specific sizes. Contact your Pack Expo Services Team member for more information about specialty and custom flooring selections.

Contact pack.expo@packexposervices.com





Order before the discount deadline.

Ordering early gives you access to a wider selection of products at discounted prices, saving you time and money so you can rest at ease.





November 3-6, 2024
Chicago, Illinois USA

Flooring Options

**Discount Deadline:
September 16, 2024**

- Orders received after the deadline or without payment will be charged the Standard price and are subject to availability.
- Custom Carpet and Vinyl Flooring must be ordered by October 18, 2024. Custom requests cannot be accommodated after this date.
- Prices are for rental only and include delivery, material handling, installation, and removal at close of show.
- Cancellations received 10-days or less prior to the first day of exhibitor scheduled move-in will be billed at 100%.
- Colors may vary due to facility lighting, printing limitation, and dye lot differences.
- All utility lines must be installed before carpet installation. Utilities should be ordered in advance.

CLASSIC CARPET

16oz. CLASSIC CARPET

Please choose your color when ordering online: Gray, Tuxedo, Black, Midnight, Blue*, Red*

**Blue and Red are not available after the Discount Deadline.*

Description	Advance	Standard
10' x 10' Classic Carpet	\$446.65	\$637.95
10' x 20' Classic Carpet	\$893.20	\$1,276.00
10' x 30' Classic Carpet	\$1,339.65	\$1,913.80

CUSTOM CUT CLASSIC CARPET

CUSTOM CUT CLASSIC CARPET - *includes visqueen

- Order Custom Cut Classic Carpeting by the square foot if your size is not listed.
- Price per square foot *100 square foot minimum
- Color options available online are Gray, Tuxedo, Black, Midnight, Red, Blue, Latte, Red Pepper and Green. *Blue, Latte, Red Pepper and Green are not available after Discount Deadline.*
- Submit booth dimensions when ordering online.

Advance	Standard
\$3.10	\$4.45

UPGRADED CARPET

- Price per square foot. *100 square foot minimum
- Submit Booth Dimensions when ordering online.

30oz. DESIGNER PLUS CARPET - *includes visqueen (Black and Gray Pearl ONLY available after Discount Deadline)

Please choose your color online: Black, Gray Pearl, Red, Navy, Lava Rock, Paprika Graphite, Royal Blue, Silky Beige, Ivory
Smoke Sword, White, Silver Cloud

Advance	Standard
\$3.65	\$5.25

45oz. SUPREME COLLECTION CARPET - *includes visqueen (Not available after Discount Deadline)

Please choose your color online: Black, Red, Silver Cloud, Navy, Charcoal, Reflex Blue, Cream, Silver Mist, Smoke, White

\$4.85	\$6.95
--------	--------

Login to Exhibitor Resource Center to order

(All orders must be submitted online - PDF forms will not be accepted)



November 3-6, 2024
Chicago, Illinois USA

Flooring Options

Discount Deadline:
September 16, 2024

CARPET PADDING & PLASTIC COVERING

CARPET PADDING *100 sqft minimum

Single Layer of Padding (1/2")

Double Layer of Padding (1")

Advance

\$1.55

\$2.70

Standard

\$2.25

\$3.90

PLASTIC COVERING *100 sqft minimum

Visqueen Plastic Covering

Mesh Poly Reinforced Plastic Covering

UPGRADE Included Visqueen to Mesh Poly Reinforced Plastic Covering

(*16 oz Custom Cut Classic Carpet, 30 oz Designer Plus Carpet and 45 oz Supreme Collection Carpet ONLY.)

\$0.40

\$0.80

\$0.40

\$0.60

\$1.20

\$0.60

EXHIBITOR PROVIDED CARPET

When logged into Exhibitor Resource Center, please indicate if you will be providing your own carpet and if you are shipping to warehouse or shipping direct to showsite.

*Material Handling charges will apply to any carpet shipped to the warehouse.

VINYL FLOORING

10' EXPO FLEX VINYL *Not available after Discount Deadline

Please choose your color online: Birch, Light Maple, Dark Maple, Ash, Smoke

*100 sqft minimum

Advance

\$4.90

Standard

\$7.00

12' EVENT FLEX VINYL *Not available after Discount Deadline

Please choose your color online: Whitewood, Silverwood, Dark Maple, Blackwood, Barnwood

\$13.70

\$19.60

PADDING FOR VINYL FLOORING

\$2.95

\$4.25

RIVIERA AND PARKSIDE TURF

RIVIERA TURF FLOORING *Not available after Discount Deadline

Please choose your color online: Black, Green

*100 sqft minimum

Advance

\$8.15

Standard

\$11.65

PARKSIDE TURF FLOORING *Not available after Discount Deadline

Please choose your color online: Green

\$8.15

\$11.65

Login to Exhibitor Resource Center to order

(All orders must be submitted online - PDF forms will not be accepted)



November 3-6, 2024
Chicago, Illinois USA

Cleaning

Discount Deadline:
September 16, 2024

- Cleaning is an exclusive service. This includes all floor services and trash removal.
- Orders received after the deadline or without payment will be charged the Standard price.
- Prices are based on the total square footage of the booth regardless of the area to be cleaned.
- *Exhibit and furnishing wipe down not included.*
- Cancellations received less than 10-days prior to the first day of exhibitor scheduled move-in will be billed at 100%.
- 100 square foot minimum applies for all services listed.
- Excessive Trash will be subject to an additional fee for dismantling and disposal.

CLEANING

- Includes emptying wastebasket(s) within your booth at the time of vacuuming and/or shampooing.
- Price per sqft *100 sqft minimum, per day

VACUUMING

One-Time Vacuuming *First day only
Daily Vacuuming - 4 days

Advance Price	Standard Price
\$.43	\$.61
\$1.46	\$2.10

SHAMPOOING

Shampooing Carpet - One-Time *First Day only
DAILY SHAMPOOING - 4 days

\$.53	\$.76
\$1.73	\$2.47

MISCELLANEOUS CLEANING

Anti-Static - One-Time Only
Anti-Static - Daily
Non-Carpet Cleaning - One Time *First Day only
Non-Carpet Cleaning - Daily
One Time Spot Cleaning

\$.28	\$.40
\$1.04	\$1.50
\$.52	\$.75
\$1.73	\$2.47
\$29.15	\$41.65

PORTER SERVICE

- Porter Service includes emptying wastebasket at 2-hour intervals during show hours. Vacuuming not included.

Size	Advance Price	Standard Price
0-500 sqft - per day	\$75.60	\$108.00
501-1500 sqft - per day	\$86.40	\$123.45
1501-2500 sqft - per day	\$110.40	\$157.75
2501-3500 sqft - per day	\$138.00	\$197.15
3501-5000 sqft - per day	\$168.00	\$240.00
5001+ sqft - per day	\$216.00	\$308.60
Full-time Porter Service - per hr - ST *8 hr min.	\$51.00	\$72.90
Full-time Porter Service - per hr - OT *2 hr min.	\$70.00	\$100.00

VISQUEEN REMOVAL

Exhibitors are responsible for removing visqueen in booth and it must be removed by Saturday, November 2, 2024 at 1:00 pm. If not removed, show management reserves the right to remove visqueen at the exhibitor's expense.

Visqueen Removal - per booth \$125.00

Login to Exhibitor Resource Center to order
(All orders must be submitted online - PDF forms will not be accepted)



November 3-6, 2024
Chicago, Illinois USA

Dumpster and
Disposal

Discount Deadline:
September 16, 2024

- If an Exhibitor leaves behind any bulk trash that is not labeled for a shipment going out or has "Hold for Collection" stickers on it as part of the Materials Donation Program, it will be deemed as trash and the Exhibitor will be charged for the removal of these items. The charges may include the following:
 - Installation & Dismantle Labor
 - Forklift & Rigging Labor
 - Dumpster Fee
 - Equipment if deemed necessary
 - Cleaning Labor
- To order, please call Customer Service Manager or stop by the Exhibitor Service Center. *Please note the dumpster sizes indicated below are to indicate the quantity of trash. A dumpster will not be brought to the booth.
- For Installation & Dismantle Labor Rates please log into Exhibitor Resource Center.
- For Rigging Labor Rates, please log into Exhibitor Resource Center.

DUMPSTER RENTAL

Item	Standard Price
1/2 of a Dumpster	\$576.75
1 Full Dumpster	\$1153.50

EXCESSIVE TRASH REMOVAL

To remove and/or destroy any material left in the exhibitor's booth, a 2-hour minimum cleaning labor charge will apply in addition to the dumpster fee. Any equipment or dismantle labor necessary will be charged at the retail rates. *Should an Exhibitor not want to incur these charges, please be sure that your booth is completely clean, and all display materials are removed before leaving the show floor.*

Item	
Excessive Trash Removal - per hour *2 hr minimum	\$75.00

Login to Exhibitor Resource Center to order
(All orders must be submitted online - PDF forms will not be accepted)



2024 New

Furniture catalog

Set the scene for engagement.





Transform any space with furniture

Good design starts with a balance of form and function. Think of your booth as a blank canvas; your furniture helps create the atmosphere and ambiance to engage.

Table of contents

- 08 Soft seating
- 14 Accent chairs
- 19 Side chairs
- 24 Barstools
- 29 Bars and counters
- 31 Ottomans
- 37 Power seating and tables
- 41 Accent tables
- 46 Café tables
- 49 Bar tables
- 52 Conference tables
- 58 Executive seating
- 60 Office essentials
- 63 Show essentials

09 Soft seating



20 Side chairs

25 Barstools



32 Ottomans



42 Accent tables

Maximize your trade show space

Selecting the right furniture sets the tone for attendee engagement, educational sessions, networking, and presentations.



Network and collaborate

Soft seating

Establish a cohesive look to connect and engage in any space.

Accent chairs

Create a welcoming environment that serves function, style, and comfort and can scale for group or individual seating.

Tables and chairs

Height can influence the type of engagement held, whether it's a casual chat at bar height or a longer connection at a café table.

Stand out from the crowd

A pop of color ensures your exhibit is unique to your brand, theme, and trade show goals.



Ottomans

Ottomans bring additional seating with flexibility and modularity to move around any space. Pick from a variety of colors and sizes that meet your presentation needs.

Group seating

Create a memorable experience with maximum impact by creating lounge areas, hospitality suites, and VIP sections.

Stage seating

Put your presenters center stage, while providing comfort and style with the right accent chair.



Explore what's new

Chelsea Barstools and Chairs

Mix and match to style around your brand.



8101019 Chelsea Barstool
(blue, black base)
18.5"L 22"D 46"H



8101006 Chelsea Barstool
(black, black base)
18.5"L 22"D 46"H



8101037 Chelsea Chair
(blue, black base)
18.5" 22"D 34"H



8101009 Chelsea Chair
(black, black base)
18.5" 22"D 34"H



8101020 Chelsea Barstool
(yellow, black base)
18.5"L 22"D 46"H



8101007 Chelsea Barstool
(gray, black base)
18.5"L 22"D 46"H



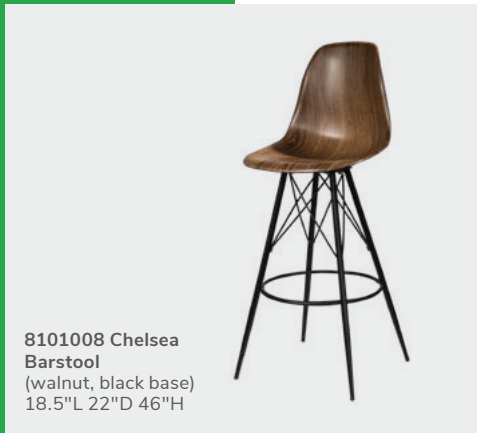
8101038 Chelsea Chair
(yellow, black base)
18.5" 22"D 34"H



8101010 Chelsea Chair
(gray, black base)
18.5" 22"D 34"H



8101021 Chelsea Barstool
(orange, black base)
18.5"L 22"D 46"H



8101008 Chelsea Barstool
(walnut, black base)
18.5"L 22"D 46"H



8101039 Chelsea Chair
(orange, black base)
18.5" 22"D 34"H



8101011 Chelsea Chair
(walnut, black base)
18.5" 22"D 34"H

Explore what's new

Fresh and new options to maximize engagement.



8101004 Brooklyn Meeting Chair
(black vinyl, black swivel base)
24.5"L 25.5"D 31.75"H



8101005 Brooklyn Meeting Chair
(black vinyl, oak base)
24.5"L 25.5"D 31.75"H



81079 Blade Barstool
(black)
20.5"L 20"D 40.5"H



New

810206 Ace Mid Back Chair
(white vinyl)
26"L 26"D 33.25-35.75"H
Adjustable height



New

810205 Ace High Back Chair
(white vinyl)
26"L 26"D 41.75-44.25"H
Adjustable height



81078 Blade Chair
(black)
20.5"L 20"D 30.5"H



New

81055 Ace Mid Back Chair
(black vinyl)
26"L 26"D 33.25-35.75"H
Adjustable height



New

81054 Ace High Back Chair
(black vinyl)
26"L 26"D 41.75-44.25"H
Adjustable height

Soft seating

Invite your guests to stay a while.



Allegro Sofa
p. | 12

Soft seating

Pair neutral colors for a cohesive look.



81037 Sterling Chair
(gray fabric)
33"L 33.5"D 32"H



8309 Sterling Sofa
(gray fabric)
82"L 33.5"D 32"H



820131 Mesa Cocktail Table
(glass top, bronze)
36"RND 17.25"H



850708 Mason Silver Floor Lamp
(chrome metal)
18"L 18"D 55"H



830949 Fairfax Sofa
(white vinyl, brushed metal)
62"L 26"D 30"H



810949 Fairfax Chair
(white vinyl, brushed metal)
27"L 26"D 30"H

Soft seating

Perfect for more in-depth conversations.



820132 Mesa Cocktail Table
(wood top, bronze)
32.25"RND 17.25"H

810180 Valencia Chair
(spice orange velvet)
28"L 30.5"D 31"H



83045 Valencia Sofa
(coffee brown velvet)
63"L 30.5"D 31"H



Soft seating

Mix and match chairs and sofas to create comfort in any size space.



81031 Montreal Chair
(blue fabric, black metal)
30"L 23.25"D 30"H



8301012 Montreal Loveseat
(blue fabric, black metal)
62"L 27.25"D 29.5"H



810950 Key Largo Chair
(black fabric)
35"L 35"D 34"H



830950 Key Largo Loveseat
(black fabric)
57"L 35"D 34"H



81050 Baja Chair
(white vinyl, brushed metal)
36"L 30.5"D 28"H



83020 Baja Loveseat
(white vinyl, brushed metal)
61"L 30.5"D 28"H

Soft seating

Set a new standard in seating.



83015 Allegro Sofa
(blue fabric, brushed metal)
73"L 34.5"D 30"H



81019 Allegro Chair
(blue fabric, brushed metal)
36"L 34.5"D 30"H



83040 Palm Beach Sofa
(white vinyl, brushed metal)
69"L 29"D 33"H



A.

B.

C.

D.

A) 85030 7' Boxwood Hedge
36.5"L 12"D 84"H

B) 820312 Sedona Side Table
(white top, bronze finish)
15.75"L 15.75"D 24"H

C) 820131 Mesa Cocktail Table
(glass top, bronze)
36"RND 17.25"H

D) 850708 Mason Silver Floor Lamp
(chrome metal)
18"L 18"D 55"H


Soft seating

Modern details to satisfy your seating senses.



810119 Naples Chair
(black vinyl, brushed metal)
36"L 30"D 33.25"H
810120 Available in power 



830120 Naples Loveseat
(black vinyl, brushed metal)
62"L 30"D 33.25"H
830122 Available in power 



83013 Cordoba Loveseat
(taupe fabric, black metal)
60.5"L 32"D 33"H



81048 Cordoba Chair
(taupe fabric, black metal)
37"L 32"D 33"H

Accent chairs

Make a lasting impression.



Bowery Swivel Chair

p. | 15

Accent chairs

Chairs that merge design, innovation, and purpose.



810874 La Brea Swivel Chair
(charcoal gray fabric, chrome)
35"L 27"D 40"H



81034 Bowery Swivel Chair
(yellow fabric, chrome) 29.75"L 31" D 27.25"H



810875 Swanson Swivel Chair
(white vinyl, chrome) 28"L 25"D 30"H



810145 Wentworth Chair
(brown vinyl, black metal) 31"L 24"D 31.5"H



81036 Lena Chair
(green leather, bronze) 27"L 25"D 31"H

Accent chairs

Let comfort and quality take the lead.



810816 Madrid Chair
(white vinyl, chrome)
30"L 30"D 31"H



81031 Montreal Chair
(blue, black metal) 30"L 23.25"D 30"H



81050 Baja Chair
(white vinyl, brushed metal) 36"L 30.5"D 28"H



810949 Fairfax Chair
(white vinyl, brushed metal) 27"L 26"D 30"H



81037 Sterling Chair
(gray fabric) 33"L 33.5"D 32"H

Accent chairs

Versatile statement pieces that stand out on a stage or in your exhibit.



81048 Cordoba Chair
(taupe fabric, black metal)
37"L 32"D 33"H

820135 Mesa End Table
(wood top, bronze)
20.5"RND 21.25"H



New

Brooklyn Meeting Chair
81046 (white vinyl, oak base)
8101005 (black vinyl, oak base)
24.5"L 25.5"D 31.75"H



New

Brooklyn Meeting Chair
81047 (white vinyl, black swivel base)
8101004 (black vinyl, black swivel base)
24.5"L 25.5"D 31.75"H

Accent chairs

Designs that stand the test of time.

81024 Atherton Chair
(distressed brown leather,
blackened steel)
27"L 31"D 30"H



820312 Sedona Side Table
(white top, bronze finish)
15.75"L 15.75"D 24"H



81032 Pasadena Chair
(white molded plastic, chrome)
27"L 25"D 26"H



810151 Munich Armless Chair
(gray fabric, black metal)
22.5"L 27"D 28.5"H



81048 Cordoba Chair
(taupe fabric, black metal)
37"L 32"D 33"H



81035 Century Chair
(gray velvet)
30"L 30"D 31"H

Side chairs

Add a little something extra.

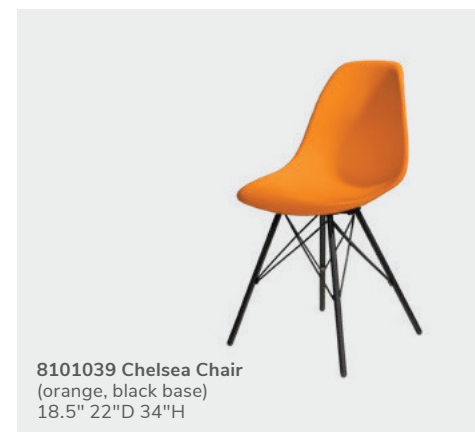
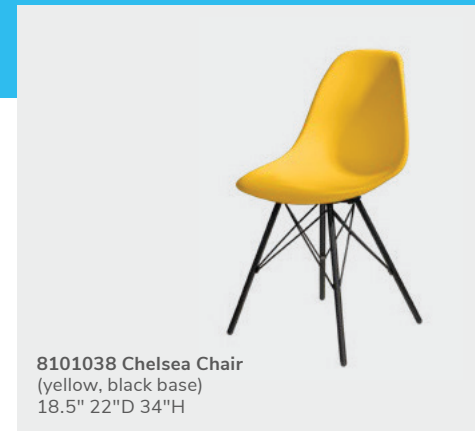


Chelsea Chair
p. | 20

New

Side chairs

Add color to create one-of-a-kind spaces.



Side chairs

Relax and have a productive conversation.

810164 Marina Chair
(white vinyl, brushed metal)
17.5"L 19.5"D 35"H



810161 Marina Chair
(brown fabric, brushed metal)
17.5"L 19.5"D 35"H



810160 Marina Chair
(black vinyl, brushed metal)
17.5"L 19.5"D 35"H



810162 Marina Chair
(ocean blue fabric, brushed metal)
17.5"L 19.5"D 35"H



810163 Marina Chair
(red fabric, brushed metal)
17.5"L 19.5"D 35"H

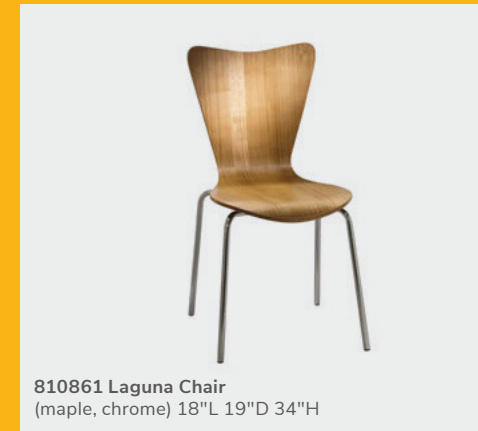
Side chairs

Add seating to any area, from a café to a theater space.



820940 Blue Hydraulic Café Table
(chrome base, blue top)
30"RND 29"H

210108 LIMERICK® Chair
BY HERMAN MILLER™
(gray) 18"W X 17.75"L X 33"H



810861 Laguna Chair
(maple, chrome) 18"L 19"D 34"H



810841 Rustique Chair w/ arms
(gunmetal) 20"L 18"D 31"H



71090 Black Diamond Arm Chair
(black) 20"L 21"D 33"H



81093 Lucent Chair
(frosted acrylic, chrome) 19.5"L 19.75"D 32.5"H



810851 Zenith Chair
(white, chrome) 18.25"L 22"D 32"H



71089 Black Diamond Side Chair
(black) 21"L 23"D 32"H

Side chairs

Bring out the personality of your event with stylish and colorful seating.

8201223 Round Hydraulic Café Table
(white laminate top, chrome hydraulic base)
30"RND 29"H



81082 Blade Chair
(red)
20.5"L 20"D 30.5"H



810130 Malba Chair
(green)
20"L 20"D 32"H



81083 Blade Chair
(sky blue)
20.5"L 20"D 30.5"H



New

81078 Blade Chair
(black)
20.5"L 20"D 30.5"H



810837 Razor
Armless Chair
(white)
15.5"L 23.5"D 30.5"H



810846
Christopher Chair
(white vinyl, chrome)
17"L 19"D 35"H



810131 Malba Chair
(gray)
20"L 20"D 32"H



810130 Malba Chair
(green)
20"L 20"D 32"H

Barstools

Meet and greet, casually.



Zoey Barstool
p. | 27

New

Barstools

Elevate your space with bold colors.



8101019
Chelsea Barstool
(blue, black base)
18.5"L 22"D 46"H



8101006
Chelsea Barstool
(black, black base)
18.5"L 22"D 46"H



8101020
Chelsea Barstool
(yellow, black base)
18.5"L 22"D 46"H



8101007
Chelsea Barstool
(gray, black base)
18.5"L 22"D 46"H



8101021
Chelsea Barstool
(orange, black base)
18.5"L 22"D 46"H



8101008
Chelsea Barstool
(walnut, black base)
18.5"L 22"D 46"H



Barstools

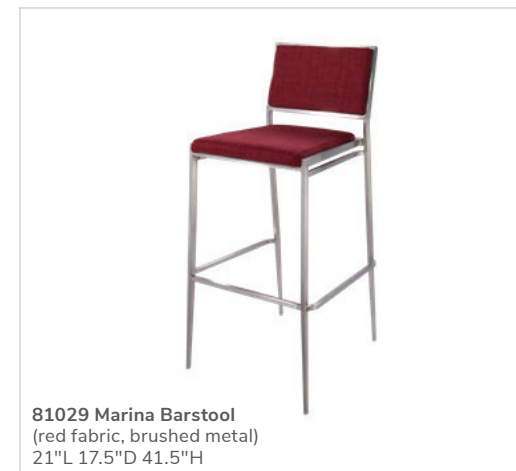
A timeless silhouette reliable for any setting.



81026 Marina Barstool
(ocean blue fabric, brushed metal)
21"L 17.5"D 41.5"H



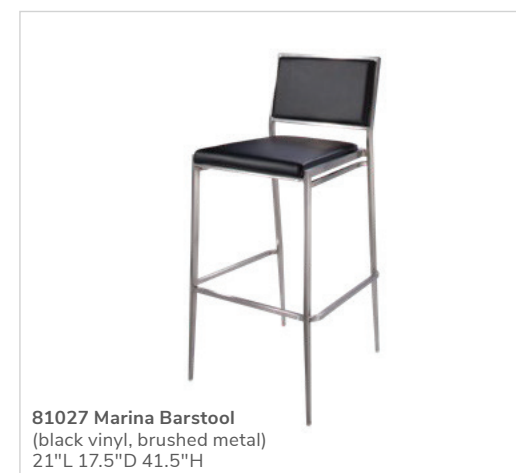
81028 Marina Barstool
(brown fabric, brushed metal)
21"L 17.5"D 41.5"H



81029 Marina Barstool
(red fabric, brushed metal)
21"L 17.5"D 41.5"H



81030 Marina Barstool
(white vinyl, brushed metal)
21"L 17.5"D 41.5"H



81027 Marina Barstool
(black vinyl, brushed metal)
21"L 17.5"D 41.5"H

Barstools

Versatile seating for any type of engagement.



New

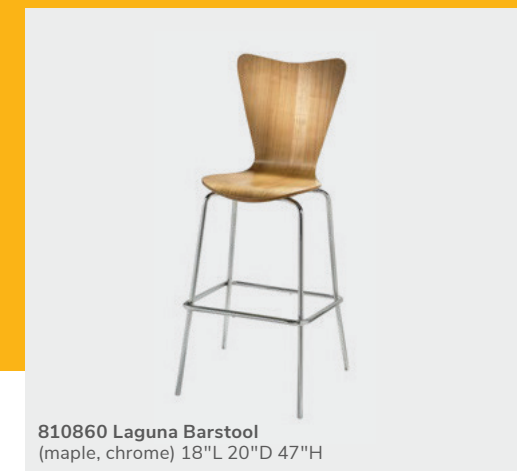
Blade Barstool
81081 (sky blue)
81079 (black)
81080 (red)
20.5"L 20"D 40.5"H



810870 Lift Barstool
(white vinyl, chrome) 15"RND 23-33.5"H



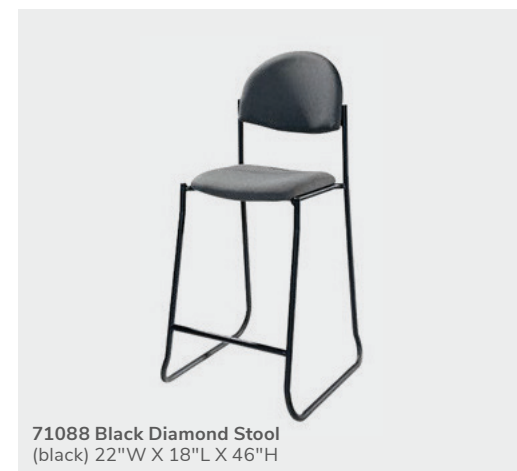
810840 Zoey Barstool
(white vinyl, chrome) 15"L 16"D 30-34.75"H



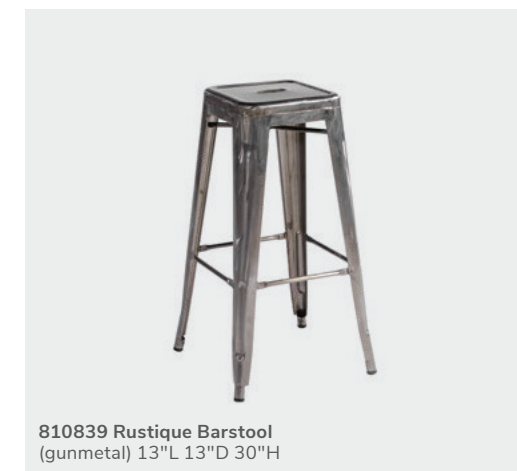
810860 Laguna Barstool
(maple, chrome) 18"L 20"D 47"H



810871 Lift Barstool
(black vinyl, chrome) 15"RND 23-33.5"H



71088 Black Diamond Stool
(black) 22"W X 18"L X 46"H



810839 Rustique Barstool
(gunmetal) 13"L 13"D 30"H

Barstools

Neutral options to complement your brand.

210109 LIMERICK® Stool
by HERMAN MILLER™
(gray)
18" X 17.75"L X 44"H



720163 Butcher Block Bar Table
(oak)
30"RND 42"H
also available
720164 36"RND 42"H



810104 Banana Barstool
(black, chrome)
21"L 22"D 41.75"H



810103 Banana Barstool
(white, chrome)
21"L 22"D 41.75"H



810848 Christopher Barstool
(white vinyl, chrome)
19"L 19"D 41"H



810202 Shark Barstool
(white, chrome)
22"L 19"D 34-44"H



810850 Zenith Barstool
(white, chrome)
19"L 20"D 44"H



81092 Lucent Barstool
(frosted acrylic, chrome)
22"L 22.5"D 45.5"H



Bars and counters

Meet and greet essentials.

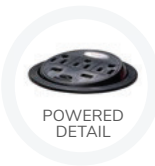


Midtown Bar
p. | 30

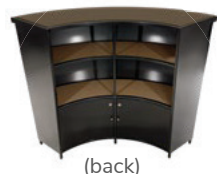
Zoey Barstool
p. | 27

Bars and counters

Create a welcoming environment.



POWERED
DETAIL



(back)



Midtown Powered Counter
60"L 18"D 42"H (pewter, glass)
850103 (unlighted)
850102 (lighted with plug-in)

Metallic pewter gray curved counter with taupe-colored glass top features two AC outlets, three USB charging outlets, locking storage cabinet and two shelves.



**810860
Laguna Barstool**
(maple, chrome)
18"L 20"D 47"H

85050 Clear Countertop Divider
(clear acrylic)
48-70"L 12"D 31.5"H



850101 Midtown Bar
(pewter, unlighted)
60"L 18"D 42"H



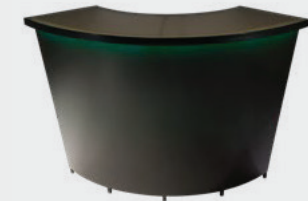
72056 Bar & Display Counter
(black) 49"L 24"D 42"H



(blue-lit)



(red-lit)



(green-lit)



(white-lit)

850100 Midtown Bar
(pewter, lighted with plug-in)
60"L 18"D 42"H

Please Note: Customer is responsible for providing labor and an electrical power source to the furniture. One 110V power source is required for each charging panel. Two charging units can be daisy-chained together. 10A max per charging panel.

Ottomans

Perfectly positioned comfort
anywhere, anytime.



Beverly, Marche & Vibe Ottomans

p. | 32, 34, 35

Vibe Cube Ottomans

Bright and cheerful designs to liven up your space.

Vibe Cube Ottomans
18"L 18"D 18"H



81535 (citrus green vinyl)



81531 (white vinyl)



81530 (black vinyl)



81532 (steel blue vinyl)



81534 (purple vinyl)



81533 (silver vinyl)



81519 (red vinyl)



81517 (yellow vinyl)



81518 (blue vinyl)



81525 (orange vinyl)

Beverly Small Bench Ottomans

Adaptable, versatile, and colorful for any show.



Beverly Small Bench Ottomans
30"L 20"D 18"H

- A) 81567 (orange fabric)
- B) 81563 (green fabric)



A.

B.



81569 (white vinyl)



81560 (black vinyl)



81561 (blue fabric)



81562 (brown fabric)



81564 (gray fabric)



81565 (linen fabric)



81566 (lavender fabric)



81568 (red fabric)



81570 (yellow fabric)

Beverly Bench Ottomans

Add elegance and style to any environment with classic designs.

Beverly Bench Ottomans
60"L 20"D 18"H

81552 (gray fabric)



81551 (brown fabric)



81550 (black vinyl)



81556 (white vinyl)

Marche Swivel Ottomans

Your go-to accessory that works for small groups, large gatherings, or theater-style seating.

Marche Swivel Ottomans
17"RND 18"H
A) 815150 (white vinyl)
B) 815154 (red fabric)
C) 81542 (distressed brown vinyl)



Ottoman styles

Creative configurations that let everyone know they're welcome.



82074 Regis Bench
(brushed metal)
47"L 15.5"D 16"H



815123 Endless Square
(black) 34"L 34"D 15"H



815122 Endless Square
(white) 34"L 34"D 15"H



815952 Endless Curved
(black) 60.5"L 37.5"D 15"H



815953 Endless Curved
(white) 60.5"L 37.5"D 15"H

Power seating and tables

Convenience that guests can plug into.




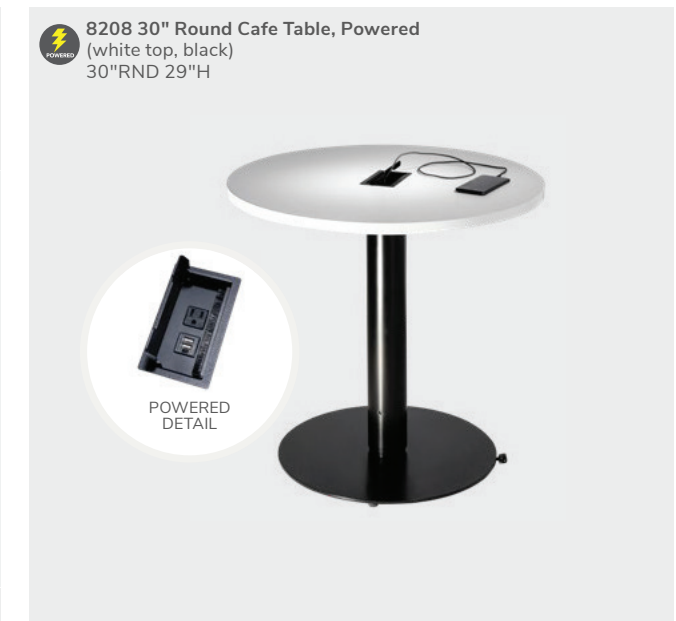
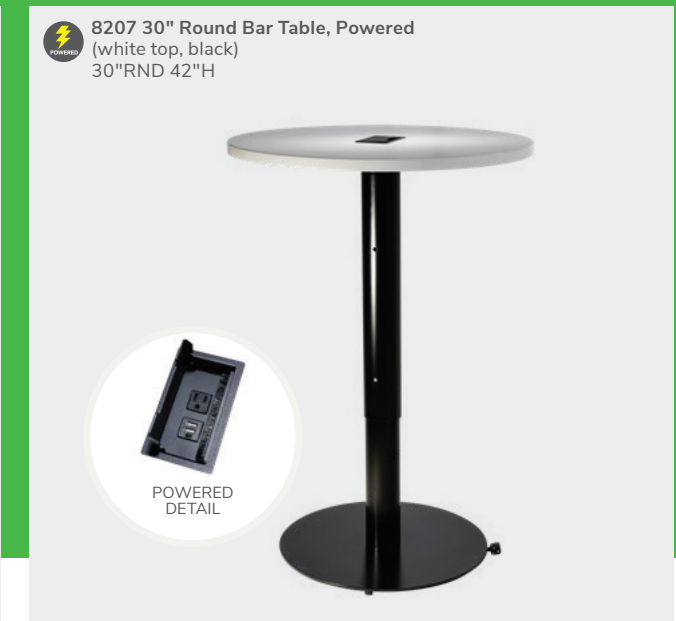
Naples Chair, Powered

p. | 40

Power seating and tables

Demos displayed powerfully.

 Denotes AC and USB charging outlets

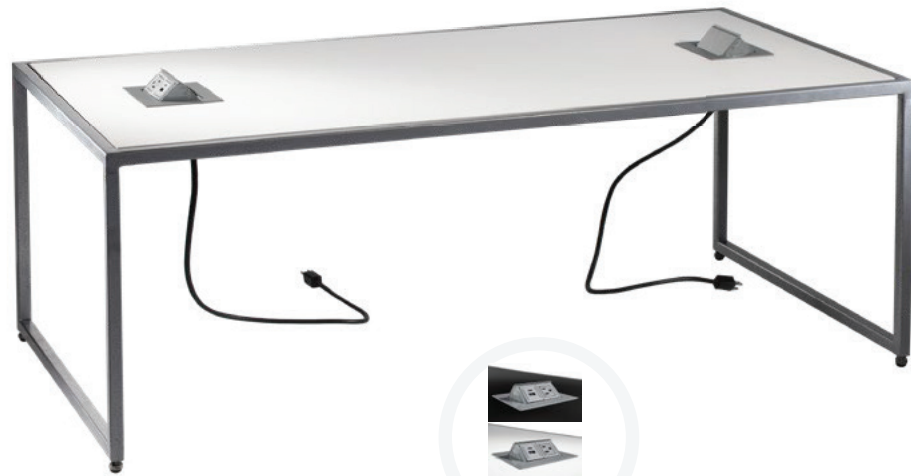



Please Note: Customer is responsible for providing labor and an electrical power source to the furniture. One 110V power source is required for each charging panel. Two charging units can be daisy-chained together. 10A max per charging panel.

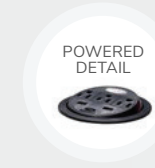
Power seating and tables


Invite attendees to recharge.

 Denotes AC and USB charging outlets



 Adelaide Powered Cocktail Tables
82089 (black top, silver)
82090 (white top, silver)
48.875"L 25.375"D 18"H

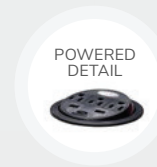


 Powered Locking Pedestal
White
85061 24"L 24"D 36"H
85063 24"L 24"D 42"H
Black
85060 24"L 24"D 36"H
85062 24"L 24"D 42"H

(The flip-top electrical units rotate 180 degrees, allowing devices to be charged from inside the locked cabinet or on the surface.)



 84083 Tech Desk, Powered with 3-Drawer File Cabinet (black metal, laminate)
60"L 30"D 30"H




 84084 Tech Desk, Powered (black metal, laminate)
60"L 30"D 30"H

Please Note: Customer is responsible for providing labor and an electrical power source to the furniture. One 110V power source is required for each charging panel. Two charging units can be daisy-chained together. 10A max per charging panel.

Power seating and tables

Convenience at your fingertips.

 Denotes AC and USB charging outlets



85035 4' Boxwood Hedge
46"L 9"D 47"H



 830122
Naples Loveseat, Powered
(black vinyl)
62"L 30"D 33.25"H




 810120
Naples Chair, Powered
(black vinyl)
36"L 30"D 33.25"H



 820710
Wireless Charging
Table, Powered
(white, AC plug-in)
20"L 20"D 18"H
Mobile devices must have Qi
wireless charging capability.



 8502
Village Charging Hub
(cream)
12"L 12"D 28.25"H



Please Note: Customer is responsible for providing labor and an electrical power source to the furniture. One 110V power source is required for each charging panel. Two charging units can be daisy-chained together. 10A max per charging panel.

Accent tables

Work in style.



Adelaide Cocktail Table

p. | 42

Accent tables

Get more work done with more space.



Adelaide Tables cocktail 48.875"L 25.375"D 17.75"H | end 21.5"L 21.5"D 17.75"H
8201302 Cocktail (white top, silver)
8201305 End (white top, silver)




Adelaide Tables cocktail 48.875"L 25.375"D 17.75"H | end 21.5"L 21.5"D 17.75"H
8201300 Cocktail (black top, silver)
8201303 End (black top, silver)



Adelaide Tables cocktail 48.875"L 25.375"D 17.75"H | end 21.5"L 21.5"D 17.75"H
8201301 Cocktail (glass top, silver)
8201304 End (glass top, silver)

Accent tables

Add style to your work space.


 Denotes AC and USB charging outlets

Silverado
(glass, chrome)
82014 Cocktail Table 36"RND 17"H
82015 End Table 24"RND 22"H



Taos Side Tables
(bronze finish) 15.75"L 15.75"D 24"H
820322 (white top)
820320 (black top)
820321 (wood top)



 820710 Wireless Charging Table, Powered
(white, AC plug-in)
20"L 20"D 18"H



820844 Aura Round Table
(white metal)
15" Round 22"H



Regis
(brushed metal)
82074 Bench Table 47"L 15.5"D 16"H
82075 End Table 16"L 15.5"D 16.5"H



Sedona Side Table
(bronze finish) 15.75"L 15.75"D 24"H
820312 (white top)
820310 (black top)
820311 (wood top)



Accent tables

Give your space a fresh look.



820135 Mesa End Table
(wood top, bronze)
20.5"RND 21.25"H

820132 Mesa Cocktail Table
(wood top, bronze)
32.25"RND 17.25"H



820133 Mesa End Table
(black top, bronze)
20.5"RND 21.25"H

820130 Mesa Cocktail Table
(black top, bronze)
32.25"RND 17.25"H



820134 Mesa End Table
(glass top, bronze)
24"RND 21.25"H

820131 Mesa Cocktail Table
(glass top, bronze)
36"RND 17.25"H

Accent tables

Design with a modern twist.



82034 Geo Cocktail Table
(glass, chrome)
50"L 22"D 16"H
82035 Geo End Table
(glass, chrome)
24"L 24"D 20"H



82027 Geo Cocktail Table
(wood, black)
47"L 24"D 17"H
82028 Geo End Table
(wood, black)
20"L 20"D 21"H

820253 Alondra End Table
(wood, chrome)
20"L 20"D 21"H
820251 Alondra Cocktail Table
(wood, chrome)
47"L 24"D 17"H



820250 Alondra Cocktail Table
(glass, chrome)
47"L 24"D 16"H
820252 Alondra End Table
(glass, chrome)
20"L 20"D 20"H

Café tables

The perfect place to connect.



Café Tables

p. | 47

Café tables

Comfort plus connections make for lasting impressions.



820241 Madison Hydraulic Café Table
(chrome base, gray acajou top) 30"RND 29"H
810130 Malba Chair (green) 20"L 20"D 32"H



85030 7' Boxwood Hedge
36.5"L 12"D 84"H

820941 30" Round Café Table Standard Black Base
(blue top) 30"RND 29"H
81093 Lucent Chair
(frosted acrylic, chrome) 19.5"L 19.75"D 32.5"H



8201233 Hydraulic Café Table
(orange top, chrome) 30"RND 29"H
810861 Laguna Chair
(maple, chrome) 18"L 19"D 34"H



820940 Blue Hydraulic Café Table
(chrome base, blue top) 30"RND 29"H
810131 Malba Chair (gray) 20"L 20"D 32"H

Café tables

The right balance to elevate your brand.



81082 Blade Chair
(red) 20.5"L 19"D 30.5"H



Soho Pedestal Tables
72069 Soho Black Top Bistro Table (pictured)
(black) 24"RND 30"H
also available 72067 36"RND 30"H | 72066 18"RND 18"H

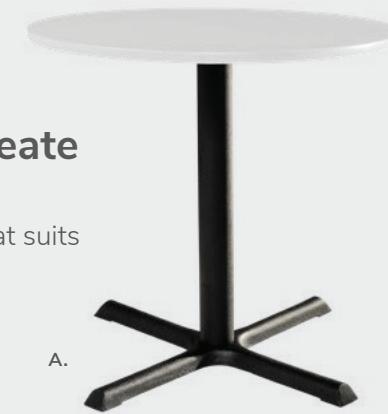
810164 Marina Chair
(white vinyl, brushed metal) 17.5"L 19.5"D 35"H



Butcher Block Pedestal Tables
72063 Butcher Block Café Table (pictured)
(oak) 30"RND 30"H
also available 72064 36"RND 30"H

Customize and create

Choose your base, black or chrome, then pick a color that suits your design.



8201220 (white)



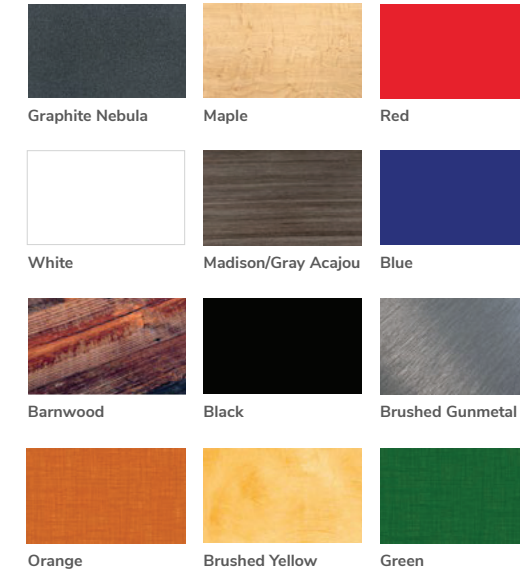
820923 (graphite nebula)

Café Tables

A) Standard Black Base 30"RND 29"H

- 8201220 (white)
- 820265 (Madison/gray acajou)
- 820941 (blue)
- 820943 (barnwood)
- 8201236 (black)
- 8201235 (brushed gunmetal)
- 8201238 (orange)
- 8201239 (brushed yellow)
- 8201237 (green)

36"RND 29"H 8201243 (black)



Café Tables

B) Hydraulic Chrome Base 30"RND 29"H

- 820923 (graphite nebula)
- 8201208 (maple)
- 820921 (red)
- 8201223 (white)
- 820241 (Madison/gray acajou)
- 820940 (blue)
- 820942 (barnwood)
- 8201231 (black)
- 8201230 (brushed gunmetal)
- 8201233 (orange)
- 8201234 (brushed yellow)
- 8201232 (green)

36"RND 29"H

- 8201209 (graphite nebula)
- 8201206 (maple)
- 820126 (white)
- 8201242 (black)

Bar tables

Network, successfully.



Bar Tables
p. 151

Bar tables

Chat a little longer to close the deal.



820930 30" Round Bar Table (blue top, chrome hydraulic base) 30"RND 45"H
810860 Laguna Barstool (maple, chrome) 18"L 20"D 47"H



8201222 30" Round Bar Table
(white top, chrome hydraulic base) 30"RND 45"H
81080 Blade Barstool (red) 20.5"L 20"D 40.5"H



8201226 Rustique Square Metal Bar Table
(gunmetal) 23.75"L 23.75"D 41.25"H
810839 Rustique Barstool (gunmetal) 13"L 13"D 30"H



85030 7' Boxwood Hedge
36.5"L 12"D 84"H

820240 30" Round Bar Table w/ Hydraulic Chrome Base
(Madison/gray acajou) 30"RND 45"H
810848 Christopher Barstool (white vinyl, chrome) 19"L 19"D 41"H

Bar tables

Endless options to make the perfect combination.

81092 Lucent Barstool
(frosted acrylic, chrome)
22"L 22.5"D 45.5"H



Butcher Block Bistro Tables
720163 Butcher Block Bistro Table (pictured)
(oak) 30"RND 42"H
also available **720164** 36"RND 42"H

810840 Zoey Barstools
(white, chrome) Adjustable height
15"L 16"D 30-34.75"H



Soho Bistro Tables
72070 Soho Black Top Bistro Table (pictured)
(black) 24"RND 42"H
also available **72068** 36"RND 42"H

Customize and create

Choose your base, black or chrome, then pick a color that suits your design.



A.

820919 (brushed yellow)



B.

820920 (red)

Bar Tables

A) Standard Black Base
30"RND 42"H

- 8201221 (white)
- 820264 (Madison/gray acajou)
- 820931 (blue)
- 820933 (barnwood)
- 820916 (black)
- 820915 (brushed gunmetal)
- 820918 (orange)
- 820919 (brushed yellow)
- 820917 (green)

36"RND 42"H
8201241 (black)



Graphite Nebula



Maple



Red



White



Madison/Gray Acajou



Blue



Barnwood



Black



Brushed Gunmetal



Orange



Brushed Yellow



Green

Bar Tables

B) Hydraulic Chrome Base
30"RND 45"H

- 820922 (graphite nebula)
- 8201207 (maple)
- 820920 (red)
- 8201222 (white)
- 820240 (Madison/gray acajou)
- 820930 (blue)
- 820932 (barnwood)
- 820911 (black)
- 820910 (brushed gunmetal)
- 820913 (orange)
- 820914 (brushed yellow)
- 820912 (green)

36"RND 45"H
8201211 (graphite nebula)
8201205 (maple)
820125 (white)
8201240 (black)

Conference tables

Take care of business.



Atomic Round Table

p. | 53

Conference tables

Grow relationships and strengthen business partnerships.



A.

C.

B.

Round Conference Tables
 A) 820708 (white laminate)
 B) 820260 (Madison/gray acajou)
 C) 8201244 (black top, black)
 42"RND 29"H
 Seated capacity – 4



Geo Rectangular Tables
 82041 (glass, black)
 82051 (glass, chrome)
 60"L 36"D 29"H
 Seated capacity – 4



Atomic Round Tables
 (glass, chrome)
 8201225 42"RND 30"H
 8201224 36"RND 30"H
 Seated capacity – 4



Geo-Square Round Tables
 82044 (glass, chrome)
 82043 (glass, black)
 42"L 42"D 29"H
 Seated capacity – 4



820706 Work Table
 (white laminate, white)
 48"L 24"D 30"H
 Seated capacity – 1

Conference tables

Make an impression that sparks innovation.



8201 10' Black Rectangular Conference Table
8202 Powered
 (black top, silver)
 120"L 48"D 29"H
 Seated capacity – 10



8205 8' Black Rectangular Conference Table
8206 Powered
 (black top, silver)
 96"L 48"D 29"H
 Seated capacity – 10



8203 5' Black Rectangular Conference Table
8204 Powered
 (black top, silver)
 60"L 48"D 29"H
 Seated capacity – 6



810175 Genesis Chair
 (black fabric, black)
 27.5"L 27.5"D 40-43.5"H Adjustable

8981380 8' Table, Powered
820868 Non-powered
 (white top, silver)
 96"L 60"D 29"H
 Seated capacity – 10



8981378 10' Table, Powered
820971 Non-powered
 (white top, silver)
 120"L 48"D 29"H
 Seated capacity – 10

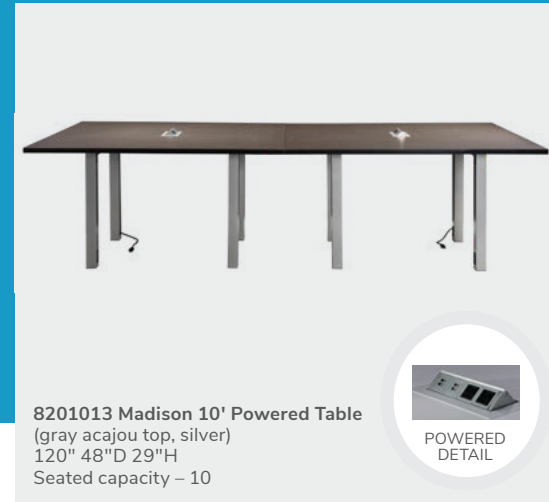


8981379 5' Table, Powered
820867 Non-powered
 (white top, silver)
 60"L 48"D 29"H
 Seated capacity – 6



Conference tables

There is room at the table.



810175 Genesis Chair
(black fabric, black)
27.5"L 27.5"D 40-43.5"H Adjustable

820263 Madison 10' Table
(gray acajou) 120"L 48"D 29"H
Seated capacity – 10

Communal and powered tables

Solutions built for everyone to gather.


 Denotes AC and USB charging outlets



810860
Laguna Barstool
(maple, chrome)
18"L 20"D 47"H

 **Ventura Powered Bar Tables**
(silver frame)
72.25"L 26.25"D 42"H
820950 (black top)
820955 (white top)
Seated capacity – 6



 **Ventura Powered Café Tables**
(silver frame)
72.25"L 26.25"D 30"H
820964 (black top)
820965 (white top)
Seated capacity – 6

810131 Malba Chair
(gray)
20"L 20"D 32"H

Ventura Communal Café Tables
(silver frame)
72.25"L 26.25"D 30"H
Maple Top
820963 (solid)
Black Top
820962 (solid)
White Top
820966 (solid)
Seated capacity – 6



Ventura Communal Bar Tables
(silver frame)
72.25"L 26.25"D 42"H
Maple Top
820954 (solid)
White Top
820956 (solid)
Black Top
820952 (solid)
Seated capacity – 6



Table top options   
BLACK WHITE MAPLE

Colors not available in all table options. Please check options listed above.

Please Note: Customer is responsible for providing labor and an electrical power source to the furniture. One 110V power source is required for each charging panel. Two charging units can be daisy-chained together. 10A max per charging panel.

Communal and powered tables

Create a sense of community that encourages engagement and productivity.



898841 Rustique Communal Bar Table
(wood)
65"L 35.5"D 42"H
Seated capacity – 6

810839 Rustique Barstool
(gunmetal)
13"L 13"D 30"H



898842 Rustique Communal Cafe Table
(wood)
65"L 35.5"D 31"H
Seated capacity – 6

898840 Rustique Bench
(wood)
55"L 13.5"D 17.5"H

820843 Timber Table
(wood)
16"RND 17"H



82039 Lexington Powered Communal Bar Table
(wood top, metal)
65"L 36"D 42"H
Seated capacity – 6

82040 Lexington Powered Communal Cafe Table
(wood top, metal)
65"L 36"D 30"H
Seated capacity – 6

Executive seating

Make a statement.



Ace High Back Chair

p. | 59

Executive seating

VIPs welcome.



New

810205 Ace High Back Chair
(white vinyl)
26"L 26"D 41.75-44.25"H
Adjustable height



810175 Genesis Chair
(black fabric, black)
27.5"L 27.5"D 40-43.5"H
Adjustable height



New

81054 Ace High Back Chair
(black vinyl)
26"L 26"D 41.75-44.25"H
Adjustable height



New

810206 Ace Mid Back Chair
(white vinyl)
26"L 26"D 33.25-35.75"H
Adjustable height



New

81055 Ace Mid Back Chair
(black vinyl)
26"L 26"D 33.25-35.75"H
Adjustable height

Office essentials

Be ready for success.



Madison Executive Desk

p. | 61

Office essentials

Stay organized. Stay ahead of the game.



84075 Madison Executive Desk
(gray acajou) 60"L 30"D 29"H
810205 Ace High Back Chair
(white vinyl)
26"L 26"D 41.75-44.25"H
Adjustable height

DESK BACK



DESK FRONT



84078 Madison Bookcase
(gray acajou) 36"L 12"D 72"H



71045 Gray Gaslift Chair
(gray, black) 20"L 26"D 38"H



85020 Posh Shelving
(chrome, acrylic) 36"L 18"D 72"H



71047 Gray Gaslift Stool
(gray, black) 20"L 24"D 46"H

Office essentials

Solutions to keep you organized.



10201484 Floor Standing Bulletin Board
(gray fabric, black)
48"W 96"L 78"H
210109 LIMERICK® Stool
BY HERMAN MILLER™
(gray)
18"W 17.75"L 44"H

220134 Brushed Aluminum Easel
(open 5 1/4"W X 64 1/4"H)
26"W X 62"H



220110 Chrome Bag Rack
(3" at center)
1"W 41"H 26"W
220109 Chrome Coat Tree
(21"W at the base)
8 1/4"W 69 1/2"H



850708 Mason Floor Lamp
(brushed silver)
18"RND 55"H
850707 Mason Table Lamp
(brushed silver)
16"RND 26"H



85091 Freestanding White Board
(silver, white)
39"L 1.5"D 72"H



220106 Corrugated Wastebasket
(black)



Show essentials

Give your show that
something “extra.”



Greenery & Dividers

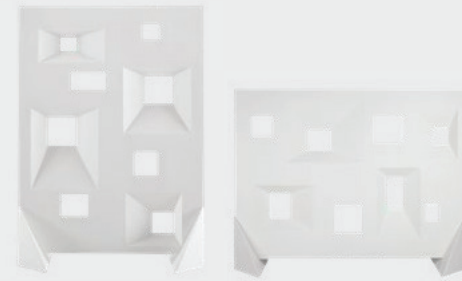
p. | 64

Show essentials

Create the space and privacy you need with greenery and dividers.



81034 Bowery Swivel Chair
(yellow fabric, chrome)
29.75"L 31"D 27.25"H
820312 Sedona Side Table
(white top, bronze finish)
15.75"L 15.75"D 24"H



85040 Miramar Dividers (molded plastic, white)
Vertical: 63"L 23"D 83"H
Horizontal: 83"L 23"D 63"H



85030 7' Boxwood Hedge
36.5"L 12"D 84"H
85035 4' Boxwood Hedge
46"L 9"D 47"H



820930 30" Round Bar Table
(blue top, chrome hydraulic base)
30"RND 45"H
810860 Laguna Barstool
(maple, chrome)
18"L 20"D 47"H

Show essentials

Essential elements you don't want to forget.



Product Kiosk & Display

75032 Display Cube—Large
(black) 24"W 24"L 42"H

75031 Display Cube—Medium
(black) 18"W 18"L 36"H

75030 Display Cube—Small
(black) 12"W 12"L 42"H



220121 Chrome Stanchion with 8' Retractable Belt
(black, belt) 42"H



220118 Chrome Sign Holder
sign holds 22"W 28"H graphic

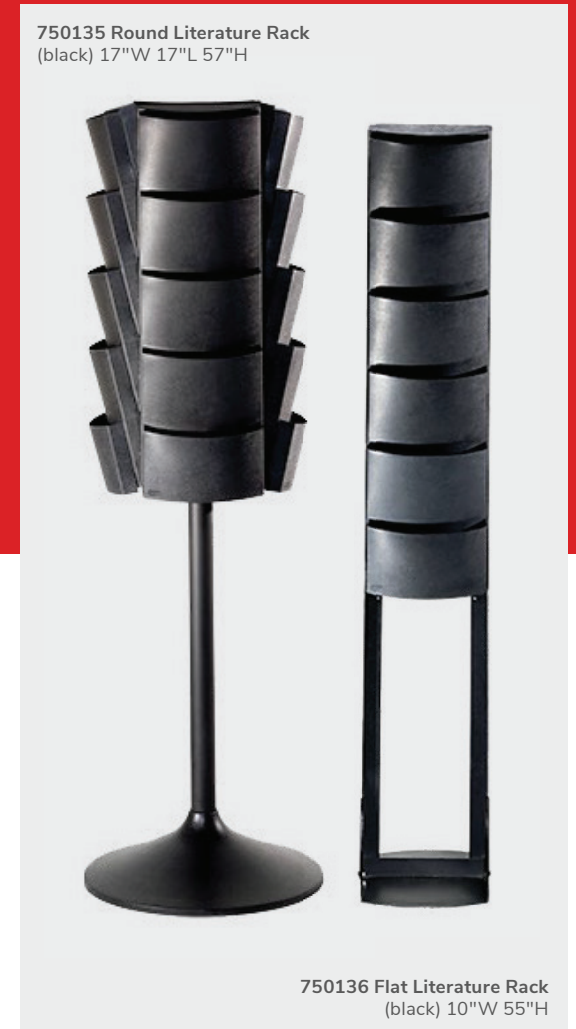


84080 3 Drawer File Cabinet on Castors
(black metal, laminate) 16"L 20"D 28"H



8503001 Large Refrigerator
(white) 14.0 cubic feet
28"L 28"D 64"H

8983000 Mini Refrigerator
(white) 4.0 cubic feet
22"L 20"D 33"H



750135 Round Literature Rack
(black) 17"W 17"L 57"H

750136 Flat Literature Rack
(black) 10"W 55"H

Show essentials

Live event basics.



Draped or Undraped Tables & Counters



81055 Ace Mid Back Chair
(black vinyl)
26"L 26"D 33.25-35.75"H
Adjustable height



Corrugated Risers

4'L 7"H Corrugated Riser
1504100 (black) | 1504101 (white)
4'L 14"H Corrugated Riser
1504200 (black) | 1504201 (white)

6'L 7"H Corrugated Riser
1506100 (black) | 1506101 (white)
6'L 14"H Corrugated Riser
1506200 (black) | 1506201 (white)

8'L 7"H Corrugated Riser
1508100 (black) | 1508101 (white)
8'L 14"H Corrugated Riser
1508200 (black) | 1508201 (white)



Table Drape Colors



Sizing Chart

24"D X 30"H | Tables Draped

124330 Tables Draped 3'L x 24"D x 30"H
124430 Tables Draped 4'L x 24"D x 30"H
124630 Tables Draped 6'L x 24"D x 30"H
124830 Tables Draped 8'L x 24"D x 30"H

24"D X 42"H | Counter Draped

124342 Counter Draped 3'L x 24"D x 42"H
124442 Counter Draped 4'L x 24"D x 42"H
124642 Counter Draped 6'L x 24"D x 42"H
124842 Counter Draped 8'L x 24"D x 42"H

24"D X 30"H | Tables Undraped

125330 Tables Undraped 3'L x 24"D x 30"H
125430 Tables Undraped 4'L x 24"D x 30"H
125630 Tables Undraped 6'L x 24"D x 30"H
125830 Tables Undraped 8'L x 24"D x 30"H

24"D X 42"H | Counter Undraped

125342 Counter Undraped 3'L x 24"D x 42"H
125442 Counter Undraped 4'L x 24"D x 42"H
125642 Counter Undraped 6'L x 24"D x 42"H
125842 Counter Undraped 8'L x 24"D x 42"H

4th Side | Table Draped 30"

12404630 Drape Table 4th Side 6' X 30"
12404830 Drape Table 4th Side 8' X 30"

4th Side | Table Draped 42"

12404642 Drape Table 4th Side 6' X 42"
12404842 Drape Table 4th Side 8' X 42"

Order before the discount deadline.

Ordering early gives you access to a wider selection of products at discounted prices, saving you time and money so you can rest at ease.





November 3-6, 2024
Chicago, Illinois USA

Furniture and
Accessories

Discount Deadline:
September 16, 2024

- Any custom furniture items ordered less than 2 weeks prior to exhibitor move-in are not guaranteed to be in stock and/or available. Please contact your Customer Service Manager for assistance or questions.
- Orders received after the Discount Deadline date or without payment will be charged the Standard rate.
- Cancellations received 10 days or less prior to the first day of exhibitor scheduled move-in will be billed at 100%.

SOFT SEATING COLLECTIONS

Item	Advance Price	Standard Price
81037 Sterling Chair, Gray Fabric	\$775.90	\$1,108.45
8309 Sterling Sofa, Gray Fabric	\$1,043.45	\$1,490.65
830949 Fairfax Sofa, White Vinyl, Brushed Metal	\$308.95	\$441.40
810949 Fairfax Chair, White Vinyl, Brushed Metal	\$193.65	\$276.65
810180 Valencia Chair, Spice Orange Velvet	\$282.30	\$403.30
83045 Valencia Sofa, Coffee Brown Velvet	\$423.45	\$604.95
81031 Montreal Chair, Blue, Black Metal	\$668.90	\$955.60
8301012 Montreal Loveseat, Blue Fabric, Black Metal	\$590.10	\$843.00
810950 Key Largo Chair, Black Fabric	\$229.60	\$328.00
830950 Key Largo Loveseat, Black Fabric	\$300.45	\$429.25
81050 Baja Chair, White Vinyl	\$494.55	\$706.50
83020 Baja Loveseat, White Vinyl	\$526.10	\$751.60
83015 Allegro Sofa, Blue Fabric	\$737.40	\$1,053.45
81019 Allegro Chair, Blue Fabric	\$462.00	\$660.00
83040 Palm Beach Sofa, White Vinyl, Brushed Metal	\$559.90	\$799.90
810119 Naples Chair, Black Vinyl	\$341.60	\$488.00
830120 Naples Loveseat, Black Vinyl	\$458.95	\$655.65
83013 Cordoba Loveseat, Taupe Fabric	\$1,331.35	\$1,901.95
81048 Cordoba Chair, Taupe Fabric	\$1,141.15	\$1,630.25

ACCENT CHAIRS

810874 La Brea Swivel Chair, Charcoal Gray Fabric, Chrome	\$203.50	\$290.75
81034 Bowery Swivel Chair, Yellow Fabric, Chrome	\$535.10	\$764.45
810875 Swanson Swivel Chair, White Vinyl	\$152.65	\$218.10
810145 Wentworth Chair, Brown Vinyl	\$294.05	\$420.10
81036 Lena Chair, Green Leather, Bronze	\$535.10	\$764.45
810816 Madrid Chair, White, Chrome	\$723.70	\$1,033.90
81046 Brooklyn Meeting Chair, White Vinyl, Oak Base	\$382.55	\$546.50
8101005 Brooklyn Meeting Chair, Black Vinyl, Oak Base	\$382.55	\$546.50
81047 Brooklyn Swivel Chair, White Vinyl, Black Base	\$382.55	\$546.50
8101004 Brooklyn Swivel Chair, Black Vinyl, Black Base	\$382.55	\$546.50
81024 Atherton Chair, Distressed Brown Leather, Blackened Steel	\$775.90	\$1,108.45
81032 Pasadena Chair, White Molded Plastic, Chrome	\$337.15	\$481.65
810151 Munich Armless Chair, Gray Fabric	\$434.00	\$620.00
81035 Century Chair, Gray Velvet	\$535.10	\$764.45

Login to Exhibitor Resource Center to order
(All orders must be submitted online - PDF forms will not be accepted)



November 3-6, 2024
Chicago, Illinois USA

Furniture and
Accessories

Discount Deadline:
September 16, 2024

- Any custom furniture items ordered less than 2 weeks prior to exhibitor move-in are not guaranteed to be in stock and/or available. Please contact your Customer Service Manager for assistance or questions.
- Orders received after the Discount Deadline date or without payment will be charged the Standard rate.
- Cancellations received 10 days or less prior to the first day of exhibitor scheduled move-in will be billed at 100%.

SIDE CHAIRS

Item	Advance Price	Standard Price
8101037 Chelsea Chair, Blue, Black	\$188.30	\$269.00
8101009 Chelsea Chair, Black, Black	\$188.30	\$269.00
8101038 Chelsea Chair, Yellow, Black	\$188.30	\$269.00
8101010 Chelsea Chair, Gray, Black	\$188.30	\$269.00
8101039 Chelsea Chair, Orange, Black	\$188.30	\$269.00
8101011 Chelsea Chair, Walnut, Black	\$188.30	\$269.00
810164 Marina Chair, White Vinyl, Brushed Metal	\$128.50	\$183.60
810161 Marina Chair, Brown Fabric, Brushed Metal	\$128.50	\$183.60
810160 Marina Chair, Black Vinyl, Brushed Metal	\$128.50	\$183.60
810162 Marina Chair, Ocean Blue Fabric, Brushed Metal	\$128.50	\$183.60
810163 Marina Chair, Red Fabric, Brushed Metal	\$128.50	\$183.60
210108 LIMERICK® Chair, Gray	\$125.15	\$178.80
810861 Laguna Chair, Maple, Chrome	\$120.55	\$172.25
810841 Rustique Chair w/ Arms, Gunmetal	\$137.30	\$196.15
71090 Black Diamond Arm Chair, Black Fabric	\$187.85	\$268.40
81093 Lucent Chair, Frosted Acrylic, Chrome	\$180.80	\$258.30
810851 Zenith Chair, White, Chrome	\$136.45	\$194.95
71089 Black Diamond Side Chair, Black Fabric	\$172.00	\$245.75
81083 Blade Chair, Sky Blue	\$69.75	\$99.65
81082 Blade Chair, Red	\$69.75	\$99.65
81078 Blade Chair, Black	\$69.75	\$99.65
810837 Razor Armless Chair, White	\$52.40	\$74.90
810846 Christopher Chair, White Vinyl, Chrome	\$137.30	\$196.15
810131 Malba Chair, Gray	\$87.70	\$125.30
810130 Malba Chair, Green	\$84.40	\$120.60

BARSTOOLS

8101019 Chelsea Barstool, Blue, Black	\$188.30	\$269.00
8101006 Chelsea Barstool, Black, Black	\$188.30	\$269.00
8101020 Chelsea Barstool, Yellow, Black	\$188.30	\$269.00
8101007 Chelsea Barstool, Gray, Black	\$188.30	\$269.00
8101021 Chelsea Barstool, Orange, Black	\$188.30	\$269.00
8101008 Chelsea Barstool, Walnut, Black	\$188.30	\$269.00
810871 Lift Barstool, Black Vinyl	\$106.70	\$152.45
810870 Lift Barstool, White Vinyl	\$106.70	\$152.45
81026 Marina Barstool, Ocean Blue Fabric, Brushed Metal	\$256.85	\$366.95
81028 Marina Barstool, Brown Fabric, Brushed Metal	\$256.85	\$366.95
81029 Marina Barstool, Red Fabric, Brushed Metal	\$256.85	\$366.95
81030 Marina Barstool, White Vinyl, Brushed Metal	\$256.85	\$366.95
81027 Marina Barstool, Black Vinyl, Brushed Metal	\$256.85	\$366.95
81081 Blade Barstool, Sky Blue	\$141.60	\$202.30
81080 Blade Barstool, Red	\$141.60	\$202.30
81079 Blade Barstool, Black	\$141.60	\$202.30

Login to Exhibitor Resource Center to order
(All orders must be submitted online - PDF forms will not be accepted)



November 3-6, 2024
Chicago, Illinois USA

Furniture and
Accessories

Discount Deadline:
September 16, 2024

- Any custom furniture items ordered less than 2 weeks prior to exhibitor move-in are not guaranteed to be in stock and/or available. Please contact your Customer Service Manager for assistance or questions.
- Orders received after the Discount Deadline date or without payment will be charged the Standard rate.
- Cancellations received 10 days or less prior to the first day of exhibitor scheduled move-in will be billed at 100%.

BARSTOOLS (continued)

Item	Advance Price	Standard Price
810840 Zoey Barstool, White Vinyl, Chrome	\$340.30	\$486.15
810860 Laguna Barstool, Maple, Chrome	\$151.75	\$216.80
71088 Black Diamond Stool, Black Fabric	\$308.05	\$440.10
810839 Rustique Barstool, Gunmetal	\$137.30	\$196.15
210109 Limerick® Stool, White	\$139.30	\$199.00
810104 Banana Barstool, Black, Chrome	\$250.15	\$357.40
810103 Banana Barstool, White, Chrome	\$250.15	\$357.40
810848 Christopher Barstool, White Vinyl, Chrome	\$163.60	\$233.75
810202 Shark Barstool, White, Chrome	\$309.50	\$442.15
810850 Zenith Barstool, White, Chrome	\$136.45	\$194.95
81092 Lucent Barstool, Frosted Acrylic, Chrome	\$191.70	\$273.90

BARS AND COUNTERS

850103 Midtown Powered Counter, Pewter, Glass, Unlighted	\$1,304.80	\$1,864.00
850102 Midtown Powered Counter, Pewter, Glass, Lighted with Plug-in	\$1,522.60	\$2,175.15
85050 Clear Countertop Divider, Clear, Acrylic	\$203.35	\$290.50
850101 Midtown Bar, Pewter, Unlighted	\$1,174.10	\$1,677.30
72056 Bar and Display Counter, Black	\$299.85	\$428.40
850100 Midtown Bar, Pewter, Lighted with Plug-in	\$1,391.90	\$1,988.45

OTTOMANS

81535 Vibe Cube Ottoman, Citrus Green Vinyl	\$129.75	\$185.40
81531 Vibe Cube Ottoman, White Vinyl	\$129.75	\$185.40
81530 Vibe Cube Ottoman, Black Vinyl	\$129.75	\$185.40
81532 Vibe Cube Ottoman, Steel Blue Vinyl	\$129.75	\$185.40
81534 Vibe Cube Ottoman, Purple Vinyl	\$129.75	\$185.40
81533 Vibe Cube Ottoman, Silver Vinyl	\$129.75	\$185.40
81519 Vibe Cube Ottoman, Red Vinyl	\$129.75	\$185.40
81517 Vibe Cube Ottoman, Yellow Vinyl	\$129.75	\$185.40
81518 Vibe Cube Ottoman, Blue Vinyl	\$129.75	\$185.40
81525 Vibe Cube Ottoman, Orange Vinyl	\$129.75	\$185.40
81567 Beverly Small Bench Ottoman, Orange Fabric	\$331.80	\$474.00
81563 Beverly Small Bench Ottoman, Green Fabric	\$331.80	\$474.00
81569 Beverly Small Bench Ottoman, White Vinyl	\$331.80	\$474.00
81560 Beverly Small Bench Ottoman, Black Vinyl	\$331.80	\$474.00
81561 Beverly Small Bench Ottoman, Blue Fabric	\$331.80	\$474.00
81562 Beverly Small Bench Ottoman, Brown Fabric	\$331.80	\$474.00
81564 Beverly Small Bench Ottoman, Gray Fabric	\$331.80	\$474.00
81565 Beverly Small Bench Ottoman, Linen Fabric	\$331.80	\$474.00
81566 Beverly Small Bench Ottoman, Lavender Fabric	\$331.80	\$474.00
81568 Beverly Small Bench Ottoman, Red Fabric	\$331.80	\$474.00
81570 Beverly Small Bench Ottoman, Yellow Fabric	\$331.80	\$474.00

Login to Exhibitor Resource Center to order
(All orders must be submitted online - PDF forms will not be accepted)



November 3-6, 2024
Chicago, Illinois USA

Furniture and
Accessories

Discount Deadline:
September 16, 2024

- Any custom furniture items ordered less than 2 weeks prior to exhibitor move-in are not guaranteed to be in stock and/or available. Please contact your Customer Service Manager for assistance or questions.
- Orders received after the Discount Deadline date or without payment will be charged the Standard rate.
- Cancellations received 10 days or less prior to the first day of exhibitor scheduled move-in will be billed at 100%.

OTTOMANS (continued)

Item	Advance Price	Standard Price
81550 Beverly Bench Ottoman, Black Vinyl	\$369.25	\$527.50
81551 Beverly Bench Ottoman, Brown Fabric	\$369.25	\$527.50
81552 Beverly Bench Ottoman, Gray Fabric	\$369.25	\$527.50
81556 Beverly Bench Ottoman, White Vinyl	\$369.25	\$527.50
815150 Marche Swivel Ottoman, White Vinyl	\$195.10	\$278.75
815154 Marche Swivel Ottoman, Red Fabric	\$195.10	\$278.75
815158 Marche Swivel Ottoman, Pear Yellow Fabric	\$195.10	\$278.75
815156 Marche Swivel Ottoman, Plum Fabric	\$195.10	\$278.75
815151 Marche Swivel Ottoman, Gray Fabric	\$195.10	\$278.75
815159 Marche Swivel Ottoman, Blue Fabric	\$195.10	\$278.75
815152 Marche Swivel Ottoman, Linen Fabric	\$195.10	\$278.75
815157 Marche Swivel Ottoman, Meadow Green Fabric	\$195.10	\$278.75
81543 Marche Swivel Ottoman, Black Vinyl	\$195.10	\$278.75
81540 Marche Swivel Ottoman, Forest Green Vinyl	\$195.10	\$278.75
81541 Marche Swivel Ottoman, Teal Velvet	\$195.10	\$278.75
81542 Marche Swivel Ottoman, Distressed Brown Vinyl	\$195.10	\$278.75
82074 Regis Bench Ottoman, Brushed Metal	\$189.85	\$271.25
815123 Endless Square, Black	\$195.55	\$279.40
815122 Endless Square, White	\$195.55	\$279.40
815952 Endless Curved, Black	\$251.90	\$359.90
815953 Endless Curved, White	\$251.90	\$359.90

POWERED SEATING AND TABLES

820950 Ventura Powered Bar Table, Black, Silver	\$757.60	\$1,082.30
820955 Ventura Powered Bar Table, White, Silver	\$688.70	\$983.90
820965 Ventura Powered Café Table, White, Silver	\$546.80	\$781.15
820964 Ventura Powered Café Table, Black, Silver	\$546.80	\$781.15
8207 30" Round Bar Table, Powered, White, Black	\$481.10	\$687.30
8208 30" Round Café Table, Powered, White, Black	\$481.05	\$687.25
82089 Adelaide Powered Cocktail Table, Black, Silver	\$502.20	\$717.45
82090 Adelaide Powered Cocktail Table, White, Silver	\$502.20	\$717.45
85061 36" Powered Locking Pedestal, White	\$298.70	\$426.75
85063 42" Powered Locking Pedestal, White	\$357.90	\$511.30
85060 36" Powered Locking Pedestal, Black	\$298.70	\$426.75
85062 42" Powered Locking Pedestal, Black	\$357.90	\$511.30
84083 Tech Desk, Powered, w/ 3-Drawer Filing Cabinet, Black Metal, Laminate	\$348.70	\$498.15
84084 Tech Desk, Powered, Black Metal, Laminate	\$305.80	\$436.90
830122 Naples Loveseat, Powered, Black Vinyl	\$551.85	\$788.40
810120 Naples Chair, Powered, Black Vinyl	\$410.85	\$586.95
820710 Wireless Charging Table, Powered, White	\$433.50	\$619.30
8502 Village Charging Hub, Cream	\$339.80	\$485.45

Login to Exhibitor Resource Center to order
(All orders must be submitted online - PDF forms will not be accepted)



November 3-6, 2024
Chicago, Illinois USA

Furniture and
Accessories

Discount Deadline:
September 16, 2024

- Any custom furniture items ordered less than 2 weeks prior to exhibitor move-in are not guaranteed to be in stock and/or available. Please contact your Customer Service Manager for assistance or questions.
- Orders received after the Discount Deadline date or without payment will be charged the Standard rate.
- Cancellations received 10 days or less prior to the first day of exhibitor scheduled move-in will be billed at 100%.

ACCENT TABLES

Item	Advance Price	Standard Price
8201302 Adelaide Cocktail Table, White, Silver	\$352.25	\$503.25
8201305 Adelaide End Table, White, Silver	\$291.50	\$416.45
8201300 Adelaide Cocktail Table, Black, Silver	\$352.25	\$503.25
8201303 Adelaide End Table, Black, Silver	\$291.25	\$416.45
8201301 Adelaide Cocktail Table, Glass, Silver	\$352.25	\$503.25
8201304 Adelaide End Table, Glass, Silver	\$291.25	\$416.45
820844 Aura Round Table, White Metal	\$146.25	\$208.95
82014 Silverado Cocktail Table, Glass, Chrome	\$405.00	\$578.60
82015 Silverado End Table, Glass, Chrome	\$381.60	\$545.15
820322 Taos Side Table, White, Bronze	\$120.40	\$172.00
820320 Taos Side Table, Black, Bronze	\$120.40	\$172.00
820321 Taos Side Table, Wood, Bronze	\$120.40	\$172.00
82075 Regis End Table, Brushed Metal	\$134.25	\$191.80
820312 Sedona Side Table, White, Bronze	\$120.40	\$172.00
820310 Sedona Side Table, Black, Bronze	\$120.40	\$172.00
820311 Sedona Side Table, Wood, Bronze	\$120.40	\$172.00
820135 Mesa End Table, Wood, Bronze	\$222.90	\$318.45
820132 Mesa Cocktail Table, Wood, Bronze	\$251.65	\$359.50
820133 Mesa End Table, Black, Bronze	\$222.90	\$318.45
820130 Mesa Cocktail Table, Black, Bronze	\$251.65	\$359.50
820134 Mesa End Table, Glass, Bronze	\$222.90	\$318.45
820131 Mesa Cocktail Table, Glass, Bronze	\$251.65	\$359.50
820253 Alondra End Table, Wood, Chrome	\$197.85	\$282.65
820251 Alondra Cocktail Table, Wood, Chrome	\$274.50	\$392.15
82034 Geo Cocktail Table, Glass, Chrome	\$381.60	\$545.15
82035 Geo End Table, Glass, Chrome	\$385.40	\$550.60
82027 Geo Cocktail Table, Wood, Black	\$184.05	\$262.95
82028 Geo End Table, Wood, Black	\$234.30	\$334.75
820250 Alondra Cocktail Table, Glass, Chrome	\$274.50	\$392.15
820252 Alondra End Table, Glass, Chrome	\$197.85	\$282.65

CAFE TABLES

72069 24"Rx30"H Soho Black Top Pedestal Table	\$241.55	\$345.10
72067 36"Rx30"H Soho Black Top Pedestal Table	\$248.50	\$355.00
72066 18"Rx18"H Soho Black Top Pedestal Table	\$132.15	\$188.80
72063 30"Rx30"H Butcher Block Pedestal Table, Oak	\$248.50	\$355.00
72064 36"Rx30"H Butcher Block Pedestal Table, Oak	\$248.50	\$355.00
820265 30"Rx29"H Madison Gray Acajou Café Table, Standard Black Base	\$213.50	\$305.00
820941 30"Rx29"H Blue Café Table, Standard Black Base	\$161.20	\$230.30
820943 30"Rx29"H Barnwood Café Table, Standard Black Base	\$204.80	\$292.60
8201236 30"Rx29"H Black Café Table, Standard Black Base	\$226.55	\$323.65
8201235 30"Rx29"H Brushed Gunmetal Café Table, Standard Black Base	\$226.55	\$323.65

Login to Exhibitor Resource Center to order
(All orders must be submitted online - PDF forms will not be accepted)



November 3-6, 2024
Chicago, Illinois USA

Furniture and
Accessories

Discount Deadline:
September 16, 2024

- Any custom furniture items ordered less than 2 weeks prior to exhibitor move-in are not guaranteed to be in stock and/or available. Please contact your Customer Service Manager for assistance or questions.
- Orders received after the Discount Deadline date or without payment will be charged the Standard rate.
- Cancellations received 10 days or less prior to the first day of exhibitor scheduled move-in will be billed at 100%.

CAFE TABLES

Item	Advance Price	Standard Price
8201239 30"Rx29"H Brushed Yellow Café Table, Standard Black Base	\$226.55	\$323.65
8201237 30"Rx29"H Green Café Table, Standard Black Base	\$226.55	\$323.65
8201238 30"Rx29"H Orange Café Table, Standard Black Base	\$226.55	\$323.65
8201220 30"Rx29"H White Café Table, Standard Black Base	\$214.10	\$305.90
8201243 36"Rx29"H Black Café Table, Standard Black Base	\$265.80	\$379.75
820241 30"R29"H Madison Gray Acajou Café Table, Hydraulic Chrome Base	\$284.45	\$406.40
8201208 30"Rx29"H Maple Café Table, Hydraulic Chrome Base	\$310.10	\$443.00
820921 30"Rx29"H Red Café Table, Hydraulic Chrome Base	\$255.45	\$364.95
820940 30"Rx29"H Blue Café Table, Hydraulic Chrome Base	\$263.65	\$376.65
820942 30"Rx229"H Barnwood Café Table, Hydraulic Chrome Base	\$322.45	\$460.65
8201223 30"Rx29"H White Café Table, Hydraulic Chrome Base	\$329.85	\$471.25
8201231 30"Rx29"H Black Café Table, Hydraulic Chrome Base	\$348.50	\$497.90
8201230 30"Rx29"H Brushed Gunmetal Café Table, Hydraulic Chrome Base	\$348.50	\$497.90
8201234 30"Rx29"H Brushed Yellow Café Table, Hydraulic Chrome Base	\$348.50	\$497.90
8201232 30"Rx29"H Green Café Table, Hydraulic Chrome Base	\$348.50	\$497.90
8201233 30"Rx29"H Orange Café Table, Hydraulic Chrome Base	\$348.50	\$497.90
820923 30"R x 29"H Graphite Nebula Café Table, Hydraulic Chrome Base	\$255.45	\$364.95
820126 36"Rx29"H White Café Table, Hydraulic Chrome Base	\$346.00	\$494.30
8201209 36"Rx29"H Graphite Nebula Café Table, Hydraulic Chrome Base	\$348.00	\$497.15
8201206 36"Rx29"H Maple Café Table, Hydraulic Chrome Base	\$345.75	\$493.95
8201242 36"Rx29"H Black Café Table, Hydraulic Chrome Base	\$344.20	\$491.75

BAR TABLES

720163 30"Rx42"H Butcher Block Bistro Table, Oak	\$271.10	\$387.30
720164 36"Rx42"H Butcher Block Bistro Table, Oak	\$271.10	\$387.30
72070 24"Rx42"H Soho Black Top Bistro Table	\$263.60	\$376.60
72068 36"Rx42"H Soho Black Top Bistro Table	\$271.10	\$387.30
8201221 30"Rx42"H White Bar Table, Standard Black Base	\$230.35	\$329.10
820919 30"Rx42"H Brushed Yellow Bar Table, Standard Black Base	\$244.00	\$348.60
820264 30"Rx42"H Madison Gray Acajou Bar Table, Standard Black Base	\$233.85	\$334.10
820915 30"Rx42"H Brushed Gunmetal Bar Table, Standard Black Base	\$244.00	\$348.60
820916 30"Rx42"H Black Bar Table, Standard Black Base	\$244.00	\$348.60
820917 30"Rx42"H Green Bar Table, Standard Black Base	\$244.00	\$348.60
820918 30"Rx42"H Orange Bar Table, Standard Black Base	\$244.00	\$348.60
820931 30"Rx42"H Blue Bar Table, Standard Black Base	\$209.20	\$298.90
820933 30"Rx42"H Barnwood Bar Table, Standard Black Base	\$215.70	\$308.15
8201241 36"Rx42"H Black Bar Table, Standard Black Base	\$246.15	\$351.65
820920 30"Rx45"H Red Bar Table, Hydraulic Chrome Base	\$255.45	\$364.95
8201222 30"Rx45"H White Bar Table, Hydraulic Chrome Base	\$329.85	\$471.25
8201207 30"Rx45"H Maple Bar Table, Hydraulic Chrome Base	\$325.70	\$465.30
820922 30"Rx45"H Graphite Nebula Bar Table, Hydraulic Chrome Base	\$255.45	\$364.95
820910 30"Rx45"H Brushed Gunmetal Bar Table, Hydraulic Chrome Base	\$348.50	\$497.90

Login to Exhibitor Resource Center to order
(All orders must be submitted online - PDF forms will not be accepted)



November 3-6, 2024
Chicago, Illinois USA

Furniture and
Accessories

Discount Deadline:
September 16, 2024

- Any custom furniture items ordered less than 2 weeks prior to exhibitor move-in are not guaranteed to be in stock and/or available. Please contact your Customer Service Manager for assistance or questions.
- Orders received after the Discount Deadline date or without payment will be charged the Standard rate.
- Cancellations received 10 days or less prior to the first day of exhibitor scheduled move-in will be billed at 100%.

BAR TABLES (continued)

Item	Advance Price	Standard Price
820911 30"Rx45"H Black Bar Table, Hydraulic Chrome Base	\$348.50	\$497.90
820912 30"Rx45"H Green Bar Table, Hydraulic Chrome Base	\$348.50	\$497.90
820913 30"Rx45"H Orange Bar Table, Hydraulic Chrome Base	\$348.50	\$497.90
820914 30"Rx45"H Brushed Yellow Bar Table, Hydraulic Chrome Base	\$348.50	\$497.90
820240 30"Rx45"H Madison Gray Acajou Bar Table, Hydraulic Chrome Base	\$284.45	\$406.40
820930 30"Rx45"H Blue Bar Table, Hydraulic Chrome Base	\$263.65	\$376.65
820932 30"Rx45"H Barnwood Bar Table, Hydraulic Chrome Base	\$322.45	\$460.65
820125 36"Rx45"H White Bar Table, Hydraulic Chrome Base	\$361.90	\$517.00
8201211 36"Rx45"H Graphite Nebula Bar Table, Hydraulic Chrome Base	\$356.95	\$509.95
8201205 36"Rx45"H Maple Bar Table, Hydraulic Chrome Base	\$352.40	\$503.45
8201240 36"Rx45"H Black Bar Table, Hydraulic Chrome Base	\$359.45	\$513.50
8201226 Rustique Square Metal Bar Table	\$253.50	\$362.15

CONFERENCE TABLES

820708 42"R White Laminate Conference Table	\$252.95	\$361.40
820260 42"R Madison Gray Acajou Conference Table	\$365.60	\$522.30
8201244 42"R Black Top Conference Table	\$359.45	\$513.50
82041 Geo Rectangular Conference Table, Glass, Black	\$651.45	\$930.65
82051 Geo Rectangular Conference Table, Glass, Chrome	\$651.45	\$930.65
8201225 42"R Atomic Conference Table, Glass, Chrome	\$288.20	\$411.75
8201224 36"R Atomic Conference Table, Glass, Chrome	\$288.20	\$411.75
82044 Geo Square Round Table, Glass, Chrome	\$195.65	\$279.50
82043 Geo Square Round Table, Glass, Black	\$195.65	\$279.50
820706 Work Table, White Laminate, White	\$217.85	\$311.25
8201 10' Black Rectangular Conference Table	\$1,123.70	\$1,605.30
8202 10' Black Rectangular Conference Table/Power	\$1,230.75	\$1,758.25
8205 8' Black Rectangular Conference Table	\$1,123.70	\$1,605.30
8206 8' Black Rectangular Conference Table/Power	\$1,230.75	\$1,758.25
8203 5' Black Rectangular Conference Table	\$636.80	\$909.75
8204 5' Black Rectangular Conference Table/ Power	\$743.80	\$1,062.60
8981378 10' White Conference Table/Power	\$1,431.50	\$2,045.00
820971 10' White Conference Table	\$1,143.85	\$1,634.10
8981380 8' White Conference Table/Power	\$1,431.50	\$2,045.00
820868 8' White Conference Table	\$862.75	\$1,232.50
8981379 5' White Conference Table/Power	\$741.35	\$1,059.10
820867 5' White Conference Table	\$587.95	\$839.95
820263 10' Madison Gray Acajou Conference Table	\$884.55	\$1,263.65
8201013 10' Madison Gray Acajou Conference Table/Power	\$1,431.50	\$2,045.00
820262 8' Madison Gray Acajou Conference Table	\$884.55	\$1,263.65
8201015 8' Madison Gray Acajou Conference Table/Power	\$1,431.50	\$2,045.00
820261 5' Madison Gray Acajou Conference Table	\$442.95	\$632.80
8201014 5' Madison Gray Acajou Conference Table/Power	\$741.35	\$1,059.10

Login to Exhibitor Resource Center to order
(All orders must be submitted online - PDF forms will not be accepted)



November 3-6, 2024
Chicago, Illinois USA

Furniture and
Accessories

Discount Deadline:
September 16, 2024

- Any custom furniture items ordered less than 2 weeks prior to exhibitor move-in are not guaranteed to be in stock and/or available. Please contact your Customer Service Manager for assistance or questions.
- Orders received after the Discount Deadline date or without payment will be charged the Standard rate.
- Cancellations received 10 days or less prior to the first day of exhibitor scheduled move-in will be billed at 100%.

COMMUNAL TABLES

Item	Advance Price	Standard Price
820963 Ventura Communal Café Table, Maple, Solid	\$431.30	\$616.15
820962 Ventura Communal Café Table, Black, Solid	\$431.30	\$616.15
820966 Ventura Communal Café Table, White, Solid	\$431.30	\$616.15
898842 Rustique Communal Café Table, Wood	\$754.75	\$1,078.25
820954 Ventura Communal Bar Table, Maple, Solid	\$625.25	\$893.25
820956 Ventura Communal Bar Table, White, Solid	\$625.25	\$893.25
820952 Ventura Communal Bar Table, Black, Solid	\$612.40	\$874.90
898841 Rustique Communal Bar Table, Wood	\$1,103.50	\$1,576.45

EXECUTIVE SEATING

Item	Advance Price	Standard Price
810205 Ace High Back Chair, White Vinyl	\$656.60	\$938.00
81054 Ace High Back Chair, Black Vinyl	\$656.60	\$938.00
810206 Ace Mid Back Chair, White Vinyl	\$656.60	\$938.00
81055 Ace Mid Back Chair, Black Vinyl	\$656.60	\$938.00
810175 Genesis Chair, Black Fabric, Black	\$140.30	\$200.45

OFFICE ESSENTIALS

Item	Advance Price	Standard Price
84075 Madison Gray Acajou Executive Desk	\$548.35	\$783.40
71045 Gray Gaslift Chair, Gray, Black	\$258.25	\$368.95
84078 Madison Gray Acajou Bookcase	\$391.40	\$559.15
85020 Posh Shelving, Chrome, Acrylic	\$460.85	\$658.40
71047 Gray Gaslift Stool, Gray, Black	\$387.35	\$553.40
10201484 Floor Standing Bulletin Board, Gray Fabric, Black	\$248.30	\$354.75
220134 Brushed Aluminum Easel	\$54.25	\$77.50
220110 Chrome Bag Rack	\$134.05	\$191.50
220109 Chrome Coat Tree	\$48.85	\$69.80
850708 Mason Floor Lamp, Brushed Silver	\$213.90	\$305.60
850707 Mason Table Lamp, Brushed Silver	\$145.70	\$208.15
85091 Freestanding White Board, Silver, White	\$539.70	\$701.60
220106 Corrugated Wastebasket, Black	\$16.90	\$24.15

SHOW ESSENTIALS

Item	Advance Price	Standard Price
85040 Miramar Divider, Molded Plastic, White	\$505.15	\$721.65
85030 7' Boxwood Hedge	\$618.60	\$883.75
85035 4' Boxwood Hedge	\$331.15	\$473.10
75032 Large Display Cube, Black	\$368.15	\$525.95
75031 Medium Display Cube, Black	\$325.05	\$464.40
75030 Small Display Cube, Black	\$303.60	\$433.75
220121 Chrome Stanchion w/ Retractable Belt, Black	\$105.25	\$150.40
220118 Chrome Sign Holder	\$134.05	\$191.50

Login to Exhibitor Resource Center to order
(All orders must be submitted online - PDF forms will not be accepted)



November 3-6, 2024
Chicago, Illinois USA

Furniture and
Accessories

Discount Deadline:
September 16, 2024

- Any custom furniture items ordered less than 2 weeks prior to exhibitor move-in are not guaranteed to be in stock and/or available. Please contact your Customer Service Manager for assistance or questions.
- Orders received after the Discount Deadline date or without payment will be charged the Standard rate.
- Cancellations received 10 days or less prior to the first day of exhibitor scheduled move-in will be billed at 100%.

SHOW ESSENTIALS (continued)

Item	Advance Price	Standard Price
750135 Round Literature Rack	\$281.90	\$402.75
750136 Flat Literature Rack	\$249.50	\$356.45
84080 3-Drawer Filing Cabinet, Black	\$101.05	\$144.40
8503001 Large Refrigerator, 14.0 Cubic Ft., White	\$1,374.95	\$1,964.25
8983000 Mini Refrigerator, 4.0 Cubic Ft., White	\$ 639.05	\$830.75

DRAPED TABLES AND COUNTERS

Please select table drape color when ordering online: Black Blue White Red Gray

124330 3'Lx2'Dx30"H Draped Table	\$118.35	\$169.10
124430 4'Lx2'Dx30"H Draped Table	\$152.15	\$217.40
124630 6'Lx2'Dx30"H Draped Table	\$195.45	\$279.25
124830 8'Lx2'Dx30"H Draped Table	\$236.25	\$337.50
124342 3'Lx2'Dx42"H Draped Counter	\$160.65	\$229.50
124442 4'Lx2'Dx42"H Draped Counter	\$195.55	\$279.40
124642 6'Lx2'Dx42"H Draped Counter	\$234.75	\$335.40
124842 8'Lx2'Dx42"H Draped Counter	\$272.00	\$388.60
12404630 4th Side Drape for 6' x30"	\$48.55	\$69.40
12404830 4th Side Drape for 8' x30"	\$48.55	\$69.40
12404642 4th Side Drape for 6'x42"	\$64.20	\$91.75
12004842 4th Side Drape for 8'x42"	\$64.20	\$91.75

UNDRAPED TABLES AND COUNTERS

125330 3'Lx2'Dx30"H Undraped Table	\$44.30	\$63.30
125430 4'Lx2'Dx30"H Undraped Table	\$51.10	\$73.00
125630 6'Lx2'Dx30"H Undraped Table	\$67.85	\$96.95
125830 8'Lx2'Dx30"H Undraped Table	\$80.60	\$115.15
125342 3'Lx2'Dx42"H Undraped Counter	\$80.60	\$115.15
125442 4'Lx2'Dx42"H Undraped Counter	\$87.00	\$124.30
125642 6'Lx2'Dx42"H Undraped Counter	\$102.60	\$146.60
125842 8'Lx6'Dx42"H Undraped Counter	\$116.40	\$166.30

SPECIAL DRAPE

Please select drape color when ordering online:

Black Blue Gray Red White

Special Drape - 8' high (per foot)	\$27.40	\$39.15
Special Drape - 3' high (per foot)	\$18.45	\$26.40

Login to Exhibitor Resource Center to order
(All orders must be submitted online - PDF forms will not be accepted)



November 3-6, 2024
Chicago, Illinois USA

Glass
Showcases

Discount Deadline:
September 16, 2024

- Unless specified below, all showcases are 20"D x 38"H and have lights, locks, sliding mirror doors, grey exterior, off-white interior aluminum frames. Showcases are available with black bases by request.
- Orders received after the Discount Deadline date or without payment will be charged the Standard rate and are subject to availability.
- Orders are subject to a \$100.00 delivery fee.
- All keys must be left with the showcase or a charge of \$10.00 will be added to your Account Summary.
- Electrical outlets and electrical labor for showcase lights are NOT included. See our electrical service online to order electrical.
- PES is not responsible for any damage or theft to any items left or stored in locked or unlocked showcases.
- Cancellations received less than 2 weeks prior to the first day of exhibitor scheduled move-in will be billed at 100%.

FULL VISION SHOWCASE

includes (1) 8" and (1) 10" glass shelves with adjustable brackets, and 26" high front glass display section

Item	Advance Price	Standard Price
4' Length	\$638.50	\$ 912.15
5' Length	\$638.50	\$ 912.15
6' Length	\$638.50	\$ 912.15

HALF VISION SHOWCASE

includes (1) 10" glass shelf with adjustable brackets, 18" high front glass display section

4' Length	\$638.50	\$ 912.15
5' Length	\$638.50	\$ 912.15
6' Length	\$638.50	\$ 912.15

TOWER VISION SHOWCASE

20"L x 20"D x 80"H, with 3 glass shelves, lights, and locks

20" x 20" Square	\$715.40	\$1,022.00
------------------	----------	------------

QUARTER VISION SHOWCASE

With 12" high front glass display section

Item	Advance Price	Standard Price
4' Length	\$638.50	\$ 912.15
5' Length	\$638.50	\$ 912.15
6' Length	\$638.50	\$ 912.15

CORNER CASE

Rear access, glass shelves

Corner Case - Full	\$669.25	\$ 956.10
Corner Case - Half	\$669.25	\$ 956.10
Corner Case - Quarter	\$669.25	\$ 956.10
Wall Case Solid	\$715.40	\$1,022.00
Wall Case - See-Thru	\$715.40	\$1,022.00

Login to Exhibitor Resource Center to order
(All orders must be submitted online - PDF forms will not be accepted)

SEEING IS BELIEVING

Quality graphics contribute significantly to the impact of your exhibit. With state-of-the-art design and printing capabilities, **PACK EXPO Services** brings your banners, signage, and exhibit graphics to life in a larger-than-life way. Our graphics products redefine “high definition,” which means your brand has never been seen like this before.

- Photo-quality / high-resolution printing on a variety of rigid and rolled material including honeycomb, foam, Polyfoam, PVC, acrylic, fabric, vinyl and mesh materials
- Grand Format printers provide high-resolution digital printing of single and double-sided banners in virtually any size
- Electronic file transfer, in-house printing, and company-wide procedure standardization allow us to control quality, cost and scheduling on a nationwide basis
- Extensive resources ensure that last minute repairs and replacements are handled efficiently as needed, no matter where your event may be located



CREATING VISUAL EXCITEMENT

Quality graphics contribute significantly to the impact of your exhibit. Vivid colors and sharp images attract attention, build traffic, and communicate messages more effectively. **PACK EXPO Services** has invested in the latest printing technology and has the skills to provide you with the finest high-resolution digital graphic reproduction available.

STATE-OF-THE-ART CAPABILITIES

PACK EXPO Services can provide four-color, photo-quality, high-resolution digital printing in virtually any size for banners, signage, exhibit graphics, and more.

SUPERIOR QUALITY CONTROL

Electronic file transfer, in-house printing, and company-wide standardization of procedures allow us to control quality, cost and scheduling for our customers on a nationwide basis. Last minute repairs and replacements are handled efficiently through our nationwide resources.

DEPTH OF RESOURCES

- 5M UV roll printers provide grand format, four-color, high-resolution digital printing of single and double-sided banners up to 16' wide and virtually any size with seams.
- 3M Dye Sublimation printers provide 10' fabric graphics that work perfectly in our SmartWall panel system.
- UV flatbeds print directly to a variety of ridged materials and offer a 100% recyclable graphic when using a cardboard substrate.
- **PACK EXPO Services** offers 100% recyclable substrates that can save you money and the environment.
- Large format Eco-Solvent printers produce high quality graphics for wall, carpet and window applications.
- 3M high speed digital cutters allow for precise cutting of multiple panel applications and also custom router graphic panels.
- Computer-aided graphic design & layout available for your assistance.

REPRODUCTION AND INSTALLATION

- Suspended banners
- Accent graphic photo panels
- Large format signage and banners
- Logo reproduction
- Backlit displays and murals
- Four-color carpet image printing





November 3-6, 2024
Chicago, Illinois USA

Graphics

Discount Deadline:
September 16, 2024

- Orders received after the advance deadline or without payment will be billed at standard rates. PACK EXPO Services cannot guarantee orders placed one week prior to first exhibitor move in date.
- Advance pricing for orders with custom graphics will apply only if production ready artwork files are received and approved prior to the Discount Deadline date. Production ready artwork files submitted or graphic proofs approved after the Discount Deadline date will be billed at Standard rates.
- If any submitted artwork files require editing (file conversion, retouching, cloning, color correction, etc.), a digital set-up fee of \$125.00 will apply. Please allow 3-5 business days for graphic proof turnaround time.
- All signs are printed using six color printing and are printed on 3/16" thick foam board, unless alternative material is agreed upon at the time of placing your order.
- Final approval of graphic proof must be received by the deadline date or expedite fees will apply.
- Once graphic proofs are approved and produced, no refunds will be issued. A 50% cancellation fee will apply for graphic cancellations requested after the Discount Deadline date only if graphics have not been produced. No refunds will be provided 10 days prior to move-in.
- Please review The [Graphic Submission Guidelines](#) for instructions on how to format and submit your graphic files.

GRAPHICS AND SIGNS

Please indicate sign orientation online: Horizontal, Vertical, PES Choice for Layout

Select backing material online: Foamcore, PVC, Gatorfoam, Ultra Board, Masonite, Plexi, Honeycomb (Eco-Board)

Item	Advance Price	Standard Price
7" x 11"	\$37.60	\$53.75
7" x 22"	\$40.05	\$57.25
7" x 44"	\$57.95	\$82.80
9" x 44"	\$72.65	\$103.80
11" x 14"	\$40.05	\$57.25
14" x 22"	\$56.20	\$80.30
14" x 44"	\$112.40	\$160.60
20" x 60"	\$227.00	\$324.30
22" x 28"	\$105.30	\$150.45
28" x 44"	\$212.40	\$303.45
40" x 60"	\$358.35	\$511.95
Graphics per Sqft (Single Sided)	\$21.65	\$30.95
Large Graphics (over 80sqft)	Call for Quote	Call for Quote

Login to Exhibitor Resource Center to order

(All orders must be submitted online - PDF forms will not be accepted)



November 3-6, 2024
Chicago, Illinois USA

Graphics
Guidelines

CUSTOMER GUIDELINES FOR SUBMITTING GRAPHICS ARTWORK

Our goal is to provide you with the best possible quality graphics for your event or exhibit. You can help us in that effort by providing digital art files using the following guidelines. If you are sending us completed, print-ready files, please pass the following information on to your graphics designer or art department. Artwork must be submitted in the proper resolution and/or file size to produce quality images. Please provide proper color matching information and proofs to ensure accurate color reproduction.

PLEASE PROVIDE FOLLOWING WHEN SUBMITTING FILES

Raster Art: (photos, logos containing any continuous tone images)

- Art submitted at 1:1 (100%), resolution should be no less than 60 dpi (100 dpi preferred)
- Art submitted at 2:1 (50%), resolution should be no less than 120 dpi (200 dpi preferred)
- Art submitted at 4:1 (25%), resolution should be no less than 240 dpi (400 dpi preferred)

Vector Art:

- Logos should be vector and have outlined fonts (if provided as bitmap, please use high-res images)

Fonts and Links:

- Supply all fonts used in your design (zip Mac fonts). If unsure how to collect fonts, convert them to outlines
- Supply all links used in your document. Use packaging feature if available. If unsure how to collect links, embed them in the file when saving

Color:

- If PMS color matching is required, please use original Pantone + Solid Coated swatches in your artwork. Modifying Pantone names will result in printing default color (CMYK)
- CMYK artwork will be produced "As Is". Our color output is balanced and vibrant
- Convert RGB art to CMYK if possible
- If you are sending Certified Color Proofs (Gracol, Swop, Fogra), please provide ICC file information used to print your samples. Best option would be to include ICC chart on your prints

ACCEPTABLE FILE SOFTWARE

We are capable of working with both PC and MAC based software, and can accept art created with the ADOBE Creative Suite - Illustrator, InDesign, and Photoshop

Always provide the following:

- Native files with fonts and links (zipped)
- High-res PDF-X/4 exports of the files

ACCEPTABLE FILE TYPES AND SUPPORT SOFTWARE

NATIVE FILES:

- AI CLOUD (CC) file with Packaged supporting links and fonts. You may keep images linked but Packaging feature must be used.
- AI (CS6, CS5, CS4...) file with embedded links and outlined fonts
- EPS file with embedded links and outlined fonts
- INDD file with Packaged supporting links and fonts

PRINT FILES:

- High-res PDF-X/4 (preferred)
- AI with PDF content (choose this option when saving file)
- EPS files with embedded links and outlined fonts

RASTER OR BITMAP ART:

- Photoshop EPS (preferred, use 8-bit preview, Max, Quality JPG compression)
- PSD (make sure font layers are rasterized)
- TIFF, JPG (quality 8 and higher)

Mac users: Use Zip or Stuffit programs when submitting fonts other than OTF (Open Type Fonts)

TO SEND ARTWORK

When placing an order online, click on "FILE UPLOADS" on the right to submit your graphic files.